



34 Darnton Drive

, Middlesbrough, TS4 3PE

£65,000

**** ATTENTION INVESTORS ****

Two self-contained Flats.

Available to purchase, together at the rate of £65,000 per unit.

Sold together, as one full property at the rate of £120,000

Currently let, sold with sitting tenants and generating £1,025 per month

This property is formerly a three bedroom semi detached house which has been converted to two self contained flats. Located within a popular, peaceful location, in the Easterside Area of Middlesbrough.

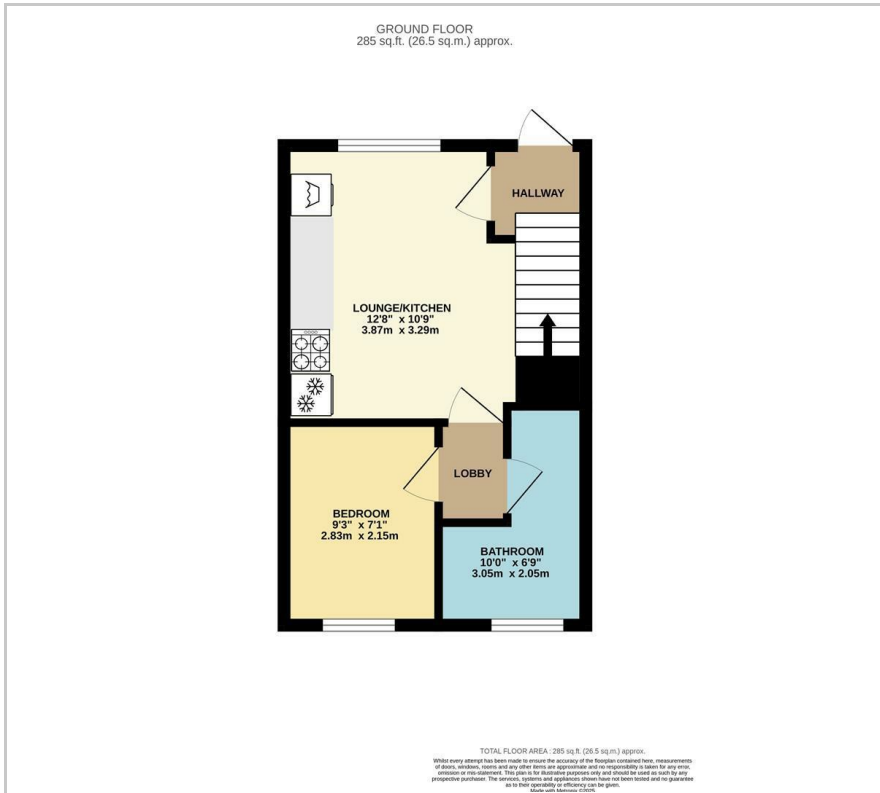
Viewing

Please contact our Progression Property Office on 01642 063352 if you wish to arrange a viewing appointment for this property or require further information.

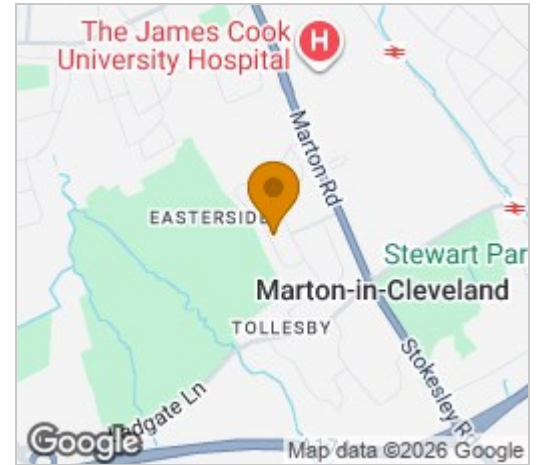
- SPLIT INTO TWO APARTMENTS
- CURRENTLY GENERATING £1,025pcm
- HIGH YEILD - Over 10%
- SOLD WITH SITTING TENANTS
- EPC RATING C



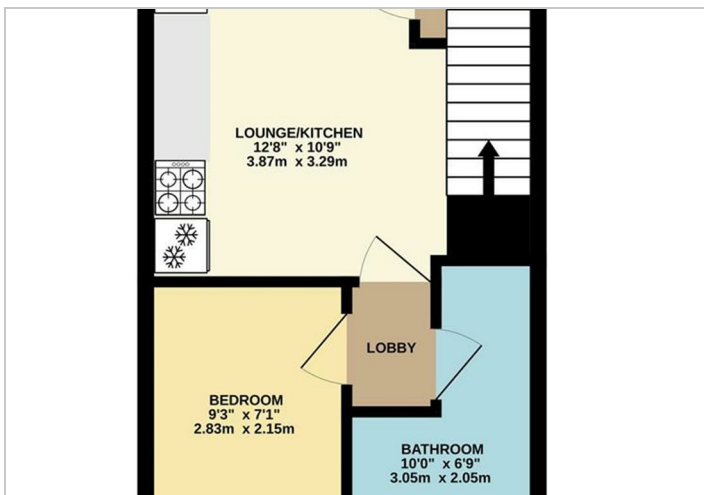
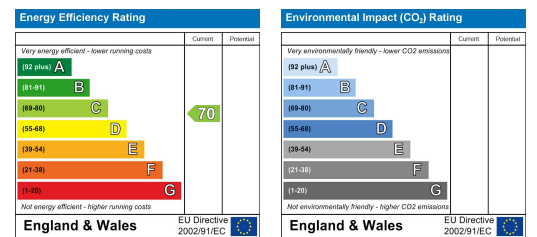
Floor Plan



Area Map



Energy Efficiency Graph



These particulars, whilst believed to be accurate are set out as a general outline only for guidance and do not constitute any part of an offer or contract. Intending purchasers should not rely on them as statements of representation of fact, but must satisfy themselves by inspection or otherwise as to their accuracy. No person in this firm's employment has the authority to make or give any representation or warranty in respect of the property.

329 Linthorpe Road, Middlesbrough, TS5 6AA

Tel: 01642 063352 Email: info@progression-lettings.co.uk <https://www.progression-property.co.uk>