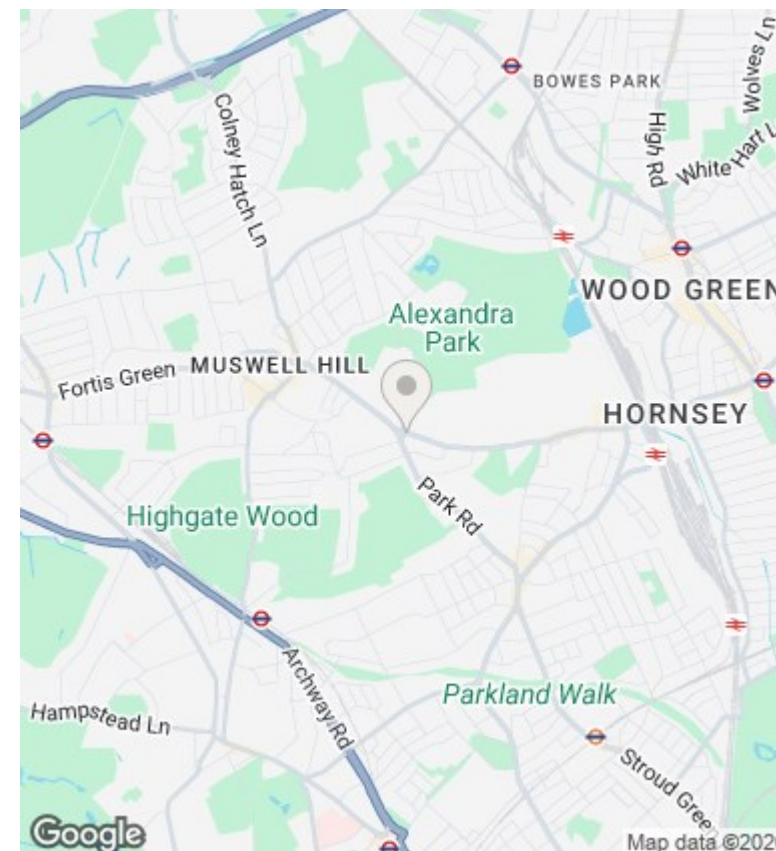
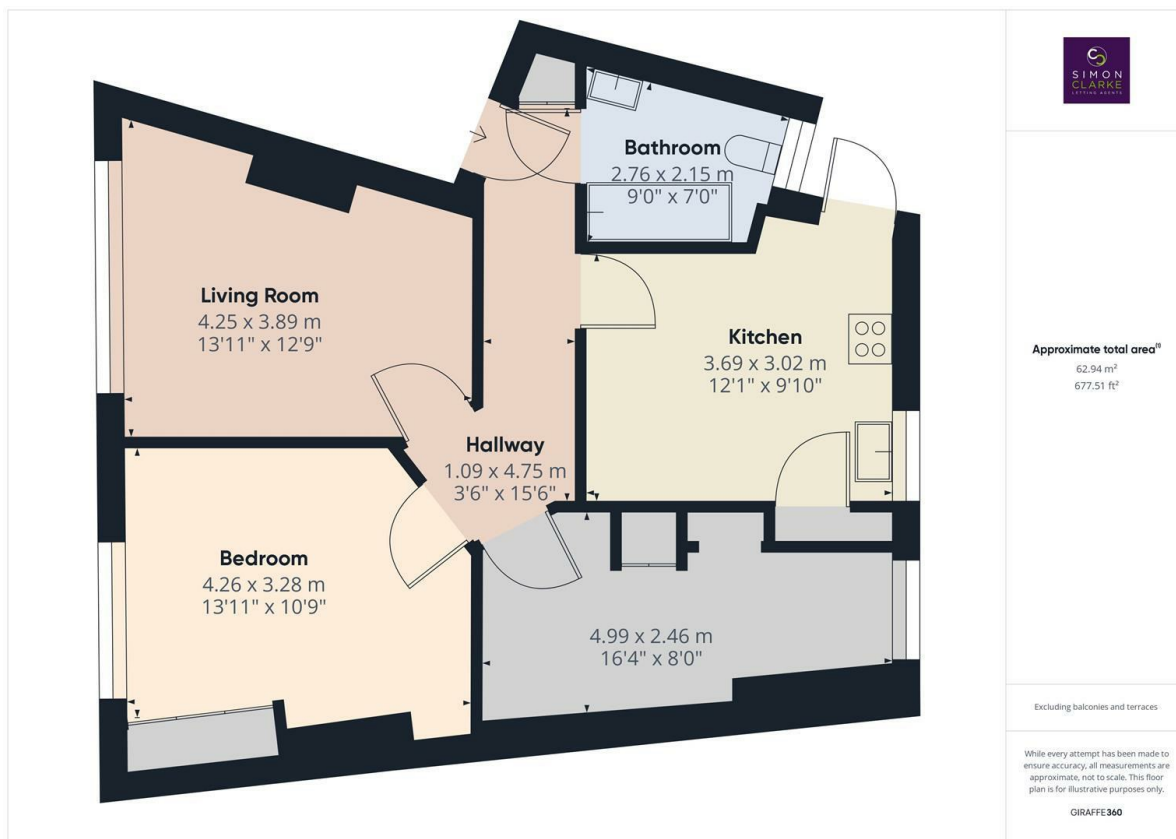




Park Road, London, N8 8LA

£1,800 PCM

- 2 Bedrooms 1st floor apartment
- Ideal for a couple wanting office space
- Modern fitted kitchen with appliances
- Available from 28th March 2026
- Fitted wardrobes in both bedrooms
- Located close to Priory Park & Alexandra Park
- Available on long term tenancy
- 1 Double 1 single bedroom
- Fitted wooden venetian blinds throughout
- Unfurnished / Council tax band C



Directions

Viewings

Viewings by arrangement only. Call 02083499000 to make an appointment.

Council Tax Band

C

EPC Rating:

C

Energy Efficiency Rating		
	Current	Potential
Very energy efficient - lower running costs		
(92-plus) A		
(81-91) B		
(69-80) C	69	74
(55-68) D		
(39-54) E		
(21-38) F		
(1-20) G		
Not energy efficient - higher running costs		
England & Wales	EU Directive 2002/91/EC	