



## 30 Shaws Way

Bath, BA2 1QQ

Price £250,000

Shaws Way is a non-standard construction and requires some works, but it holds significant potential for those looking to personalise their new home.

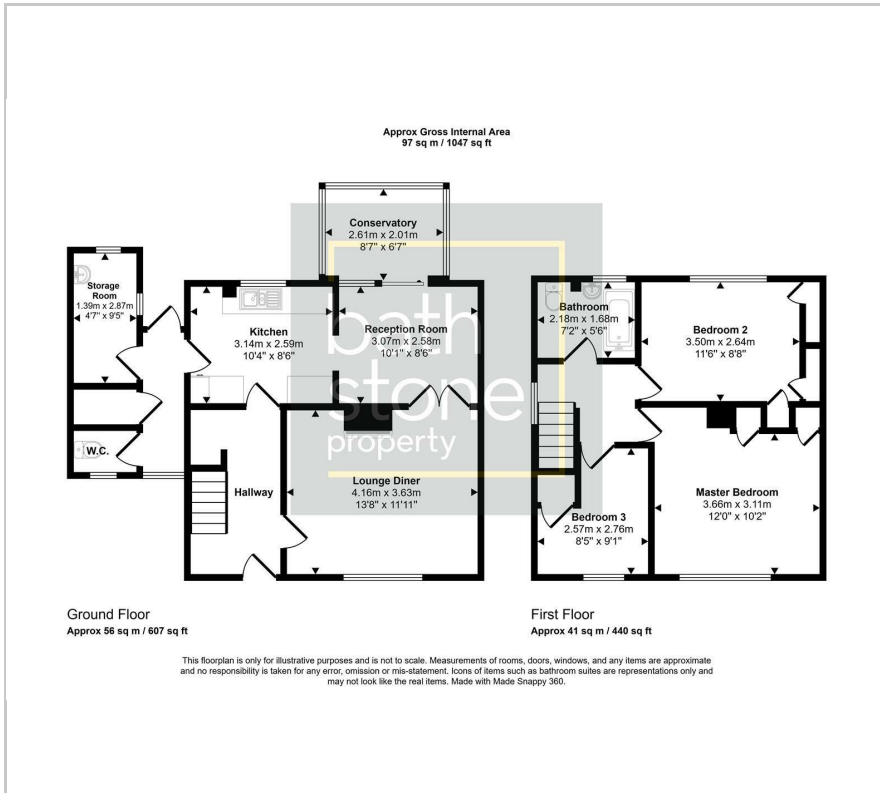
- Non- Standard Construction
- Semi-Detached
- Three Bedrooms
- Spacious Living Areas
- Ground Floor W/C
- Garage
- No Chain

### Viewing

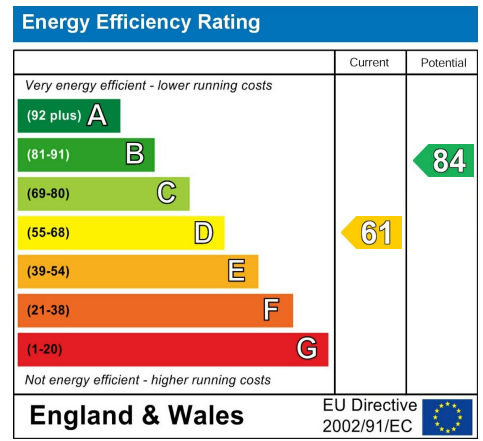
Please contact our Bath Stone Property Office on 01225422224 if you wish to arrange a viewing appointment for this property or require further information.



# Floor Plan



# Energy Efficiency Graph



Please give us Feedback



These particulars, whilst believed to be accurate are set out as a general outline only for guidance and do not constitute any part of an offer or contract. Intending purchasers should not rely on them as statements of representation of fact, but must satisfy themselves by inspection or otherwise as to their accuracy. No person in this firm's employment has the authority to make or give any representation or warranty in respect of the property.