



## Chiswick Common Road, London, W4 1RS

A well presented two double bedroomed flat situated in the heart of Chiswick. Open parks and the extensive boutique shopping and restaurant facilities of Chiswick's high road are only a short walk away.

Accommodation provides: two double bedrooms both with en-suites, open plan reception with fitted kitchen. Gas fired central heating and double glazing. Local transport links include: Turnham Green tube station numerous local bus routes with convenient access via A4/M4 central London Heathrow and the West. Hounslow Council Band E. EPC-D. The property is offered furnished and is available now.

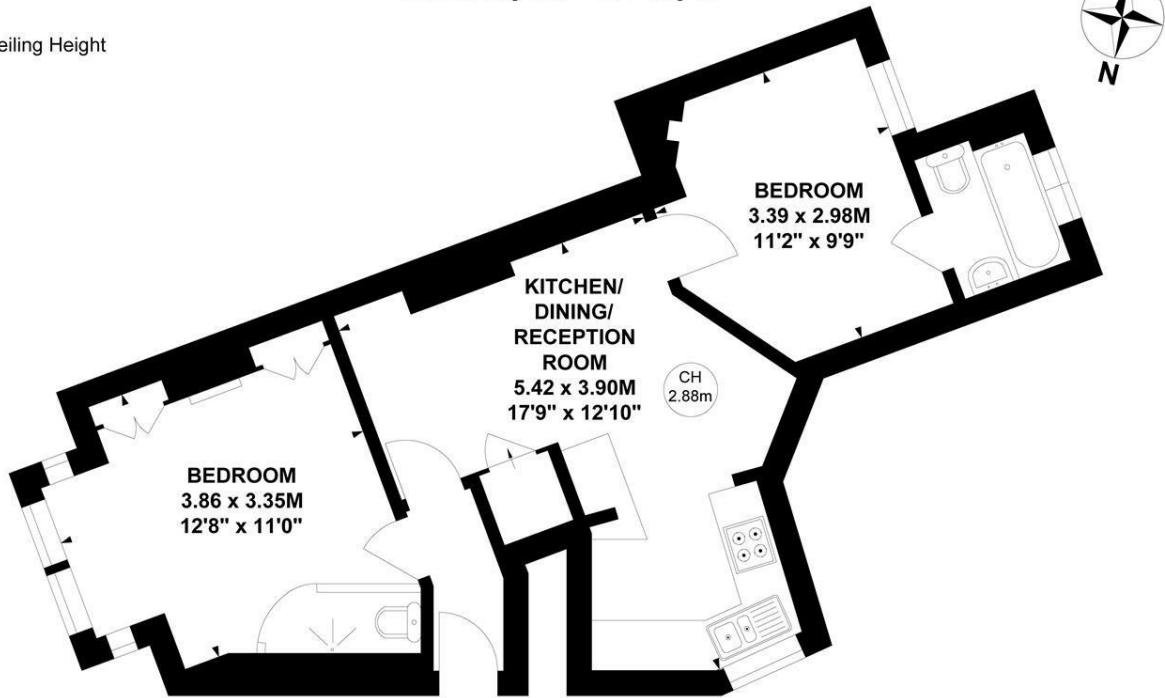
- Two double bedrooms
- Both rooms with en-suite
- Excellent central Chiswick location
- Open parks on your doorstep
- Furnished
- Available now

**£2,350 Per Calendar Month**

# Victor Villas, W4

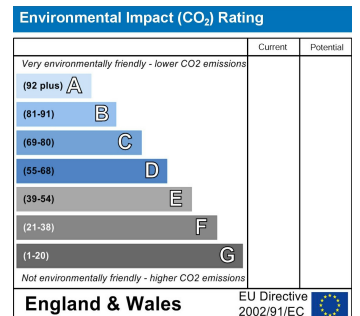
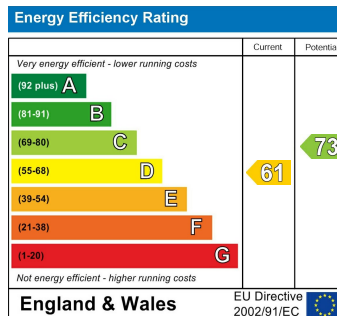
Approximate gross internal area  
45.21 sq m / 487 sq ft

Key :  
CH - Ceiling Height



## Ground Floor

Not to scale, for guidance only and must not be relied upon as a statement of fact.  
All measurements and areas are approximate only



5-7 Turnham Green Terrace, Chiswick, London, W4 1RG

Tel 020 8747 8800

E-mail [lettings@whitmanandco.com](mailto:lettings@whitmanandco.com)

Website [www.whitmanandco.com](http://www.whitmanandco.com)

[PrimeLocation.com](http://PrimeLocation.com)

[Zoopla.co.uk](http://Zoopla.co.uk)

[rightmove](http://rightmove.com)

[OnTheMarket.com](http://OnTheMarket.com)

MISREPRESENTATION ACT 1967

Whitman & Co. for themselves and for the vendors give notice that these particulars do not constitute any part of, an offer of contract. All statements contained in these particulars are made without responsibility on the part of Whitman & Co. or the vendor. None of the statements contained in these particulars is to be relied upon as statements or representations of facts. Any intending purchaser must satisfy himself by inspection or otherwise as to the correctness of each of the statements contained in these particulars. The vendor does not make or give, and neither Whitman & Co. or any person in their employment has any authority to make or give, any representation or warranty whatever in relation to the property.