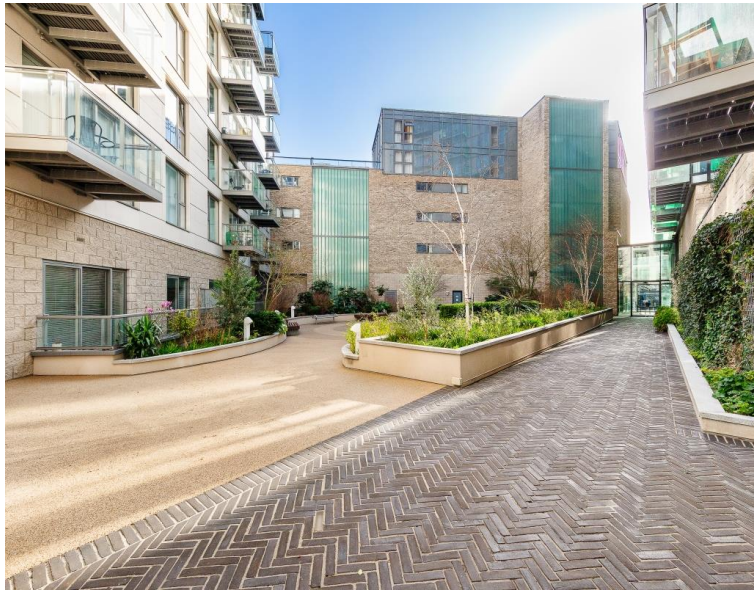




**3 Avantgarde Place, London E1**  
£475,000 Leasehold







## Description

This stylish studio apartment is located within the contemporary Courtyard Apartments development at Avantgarde Place on the third floor. The efficient studio design maximizes the 410 sqft of available space through thoughtful planning and high-specification finishes.

The open-plan reception and kitchen area features integrated appliances and modern fixtures that create a functional yet elegant living environment. The studio layout provides flexible accommodation options while maintaining comfort and practicality for everyday use.

The contemporary bathroom includes quality fittings, and residents enjoy access to exceptional building facilities such as a fully-equipped gymnasium and fitness center. The development showcases quality construction and architectural design throughout.

Positioned in a desirable location with excellent transport links and local amenities nearby, this property suits professional occupiers seeking urban convenience. The studio represents an attractive investment opportunity within a well-regarded development, offering strong rental potential and capital growth prospects in this sought-after area.

- Elegant Studio
- Modern Bathroom
- 3rd floor
- Open-plan kitchen
- Partitioned sleeping area
- 24 hour concierge
- On-site leisure facilities
- 0.1 mile from Shoreditch High Street Station
- Approx. 410 sq ft
- EPC: B

# Floorplan

410 sq ft | 38 sq m

## Courtyard Apartments, E1

Approximate Gross Internal Area = 38.15 sq m / 410 sq ft

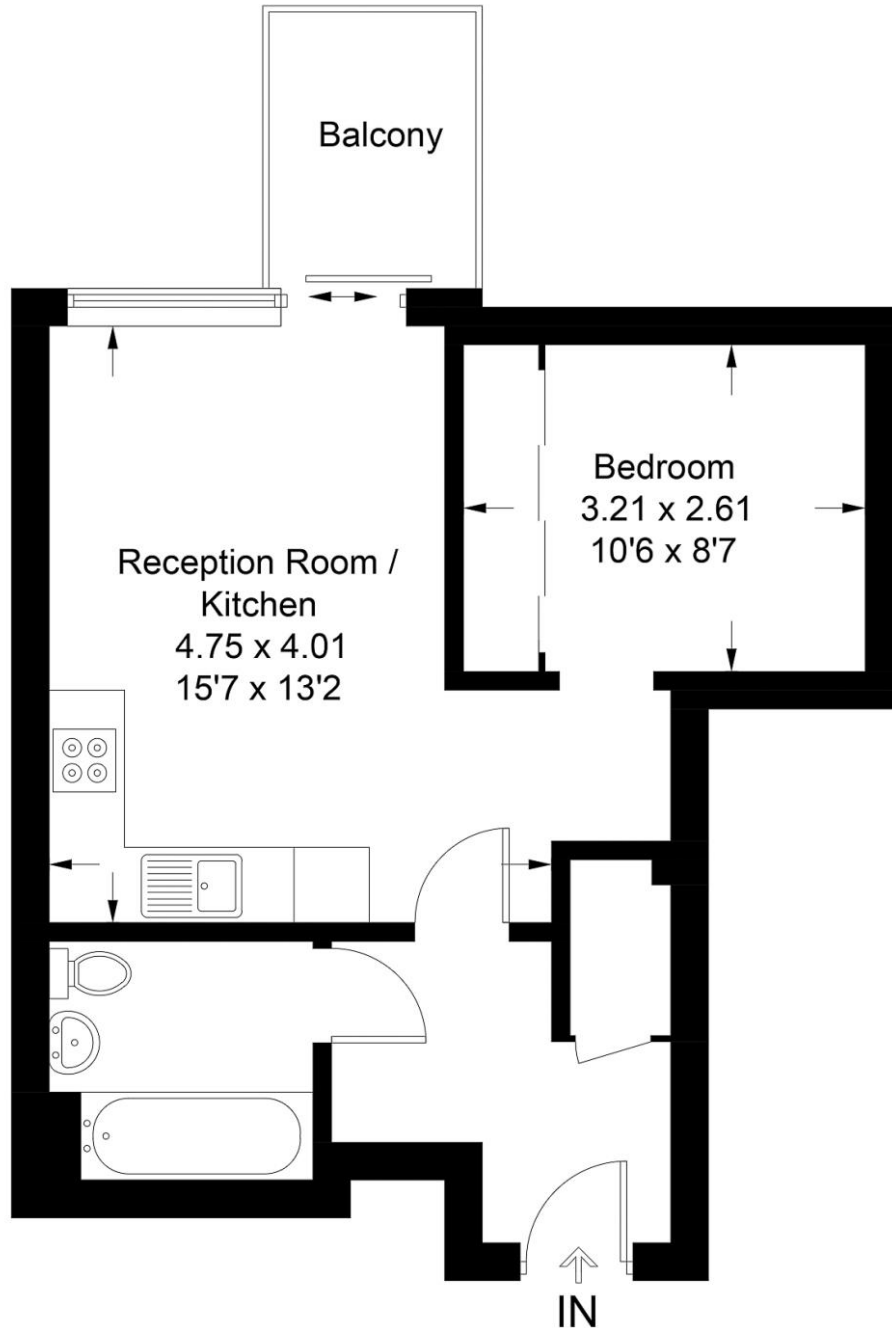


Illustration for identification purposes only, measurements are approximate, not to scale. Fourlabs.co © (ID1281919)

City  
25 Walbrook The Walbrook  
Building,  
London EC4N 8AF  
+4420 7337 4000

*Urban living, your way.*

[jll.co.uk/residential](http://jll.co.uk/residential)

© 2019 Jones Lang LaSalle IP, Inc. All rights reserved. All information contained herein is from sources deemed reliable; however, no representation or warranty is made to the accuracy thereof.

