



Eaves

WWW.EAVESHOUSE.COM

The Old Stables

2 Higher Street, Merriott, TA16 5PJ

GUIDE PRICE: £525,000

A detached 3 bedroom hamstone house, towards the edge of the village, beautifully presented throughout. The current owners have carried out extensive renovations over the last few years and have created a cosy mix of period and contemporary living.

TENURE — FREEHOLD



Overview

A detached period house, on the edge of Merriott, just 2 miles north of Crewkerne. The house, which was converted in the early 1900's, now offers a wide entrance wall, an open plan kitchen/dining room, sitting room, utility and cloakroom, master bedroom with ensuite, 2 further bedrooms, bathroom, garden and a driveway to the front with ample parking.

Key Features

- A PERIOD DETACHED HOUSE
- RECENTLY RENOVATED
- GOOD-SIZED ROOMS
- OPEN PLAN KITCHEN/DINING ROOM
- SITTING ROOM
- UTILITY AND CLOAKROOM
- 3 BEDROOMS
- 2 BATHROOMS
- PRETTY GARDEN
- DRIVEWAY AND PARKING



Immediate Area

Merriott itself has a traditional pub, shop, garage with post office, a great café (The Feed Station), a squash club, parish church and a primary school. The market town of Crewkerne is just 2 miles away and offers a range of independent shops, restaurants, a Waitrose and a mainline train service direct to London Waterloo. The larger towns of Yeovil (11 miles) and Taunton (21 miles) offer a larger range of shops, restaurants and entertainment.

Both the A303 and M5 (at Taunton) are easily accessible and it is just 16 miles to the World Heritage Jurassic Coastline at Lyme Regis.



EAVES

THE OLD STABLES, MERRIOTT



The House

The Old stables and some of the surrounding houses were originally part of Scott's Nurseries, a highly successful nursery with a nationwide reputation for quality due to the areas rich soil.

Known as "The Royal Nurseries" Scott's is believed to have supplied Queen Victoria's residence on the Isle of Wight, Osborne House.

The house is built of local honey-coloured hamstone under a natural slate roof. Renovated by our clients the house has bags of character with exposed beams, reproduction flagstone flooring, wood panelling, Victorian style radiators and 2 fireplaces with wood burning stoves.

EPC - D





Interior

There are two front doors to the house, one leading into the utility/cloakroom and the main one that takes you into the entrance hall. The entrance hall is nice and wide with stairs to the first floor, part panelled walls, a useful coat cupboard and another cupboard under the stairs.

To the left is the open plan kitchen/dining room. This is a great family space with a door and large window overlooking the garden at the far end. The kitchen is modern with plenty of storage, Quartz worktops, a double electric oven, induction hob, kitchen island, butler sink, plenty of room for a large dining table and sofa, solid wood floor and a fireplace with a wood burning stove.

To the right of the entrance hall is the sitting room. A cosy space with a solid wood floor, more panelling, another fireplace with a wood burning stove and exposed brickwork.

Beyond the sitting room is the utility and cloakroom. The second front door leads into this sizeable utility. There is plumbing for a washing machine, plenty of storage space, a worktop with sink and a door to the downstairs loo. Up the wooden stairs you have a long landing with 2 windows allowing plenty of light in. There are also useful built in cupboards for storage.



The main bedroom is very impressive and mirrors the kitchen/dining room below. A beautifully light room with windows to the front and overlooking the garden to the side. The main bedroom has plenty of built in wardrobe space and a modern ensuite shower room. Also on the 1st floor are 2 more double bedrooms and the main family bathroom.



Outside

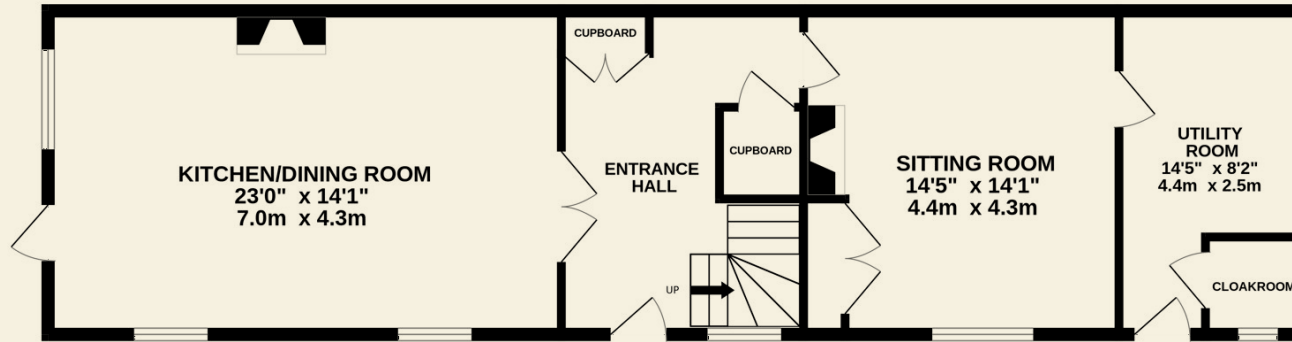
To the front of the house is a private gravel driveway with parking for about 4 cars if needed. A gate, from the driveway, leads to the garden which is to the side of the house.

The garden is of a good size. It is mainly lawned with scattered flower beds and raised beds. A decent sized patio leads out from the kitchen/dining room and there is a large wooden shed/workshop with lighting and power. At the end of the garden is a timber summerhouse and further wooden shed.



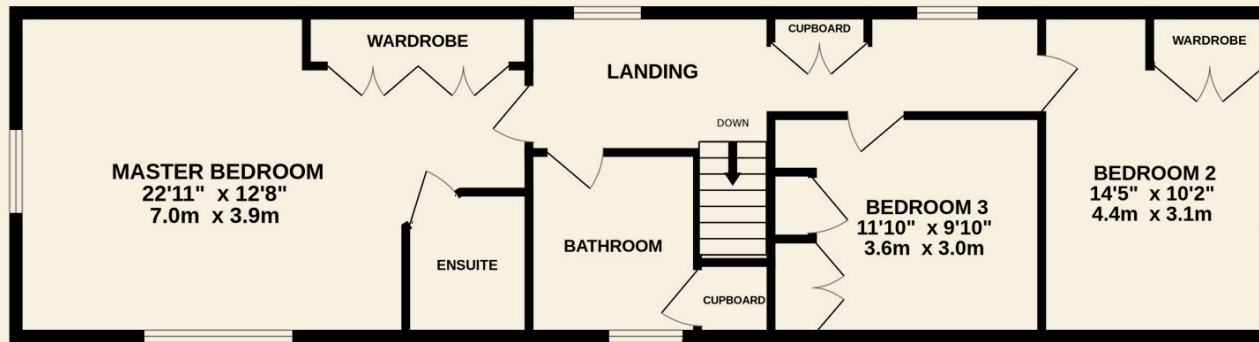
GROUND FLOOR

796 SQ. FT. / 73.9 SQ.M. APPROX



FIRST FLOOR

809 SQ. FT. / 75.1 SQ.M. APPROX



TOTAL FLOOR AREA

1604 SQ. FT. / 149.0 SQ.M. APPROX

Floorplans



Directions

Coming from the east down the A303, take the 2nd exit at the South Petherton (Hayes End) roundabout. Continue on this road until you reach the next roundabout and take the 1st exit to Lopen.

Continue through Lopen and keep driving for a couple of miles until you reach Merriott. Take the first left onto Church St and a left at the very end. The house can then be found on the right hand side.

WHAT 3 WORDS ///FORTRESS.FIZZ.NOTIFYING

Services

Mains gas, electricity, water and drainage.

Local Authority

Somerset Council -Band E

Eaves Notes

The current owners replaced all the windows in 2022 and the rear roof in 2023 as part of their renovation programme. The house has a right of way, over the start of the neighbour's driveway, leading to its own private driveway and parking.

Eaves

WWW.EAVESHOUSE.COM

Contact Us

01935 571049

INFO@EAVESHOUSE.COM

FOLLOW:

@EAVES.HOUSE

OPENING HOURS

MON — FRI:

09:00 AM TO 17:30 PM

SATURDAY:

09:00 AM TO 13:00 PM

SUNDAY:

BY APPOINTMENT

Viewings strictly
by appointment only.

In accordance with the Property Mis-Description Act 1991, the following details have been prepared in good faith, and are not intended to constitute part of an offer or contract. Any information contained herein (whether in the text, plans or photographs) is given in good faith but should not be relied upon as being a statement of representation of fact. Nothing in these Particulars shall be deemed to be a statement that the property is in good condition or otherwise nor that any services or facilities are in good working order. Any measurements of distances referred to herein are approximate only. June 2024.

