

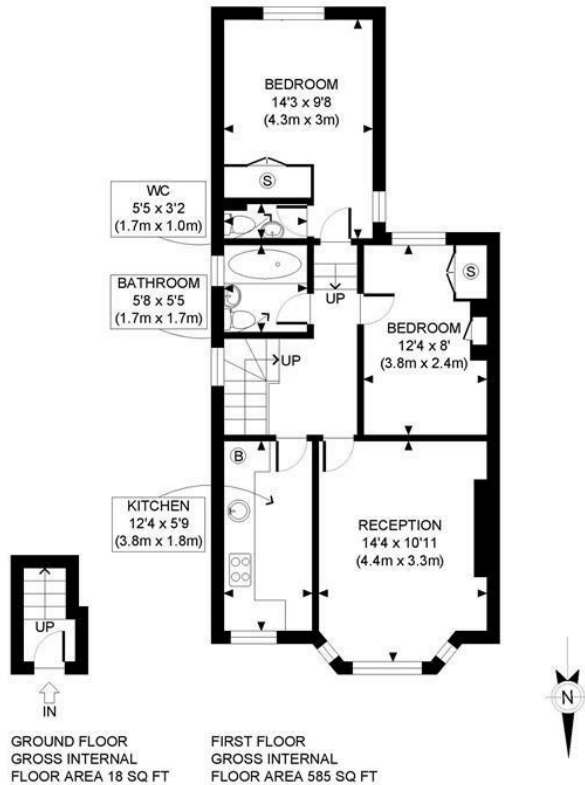
# Rolfe East



## Heathfield Road, W3

£2,200 Per Month

- Available Now
- Newly Decorated
- Unfurnished
- Main bathroom plus an en-suite with basin and WC



APPROX. GROSS INTERNAL FLOOR AREA: 603 SQ FT/ 56 SQM

**PROPERTY PHOTO PLANS**.COUK  
 ONE STOP SHOP FOR PROPERTY MARKETING

This plan is for illustrative purposes only and should be used as such by any prospective client. Whilst every attempt has been made to ensure the accuracy of the Floor Plan contained here, measurements of the doors, windows, rooms and any other items are approximate and no responsibility is taken for any errors, omissions, or misstatement. The services, systems and appliances shown have not been tested and no guarantee as to the operability or efficiency can be given.

## Viewings

Viewings by arrangement only.  
 Call 020 8993 7755 to make an appointment.

## Council Tax Band

E

## EPC Rating:

D

Energy Efficiency Rating		Current	Potential
<i>Very energy efficient - lower running costs</i>			
(92 plus) <b>A</b>			
(81-91) <b>B</b>			
(69-80) <b>C</b>			
(55-68) <b>D</b>		57	64
(39-54) <b>E</b>			
(21-38) <b>F</b>			
(1-20) <b>G</b>			
<i>Not energy efficient - higher running costs</i>			
<b>England &amp; Wales</b>	EU Directive 2002/91/EC		