



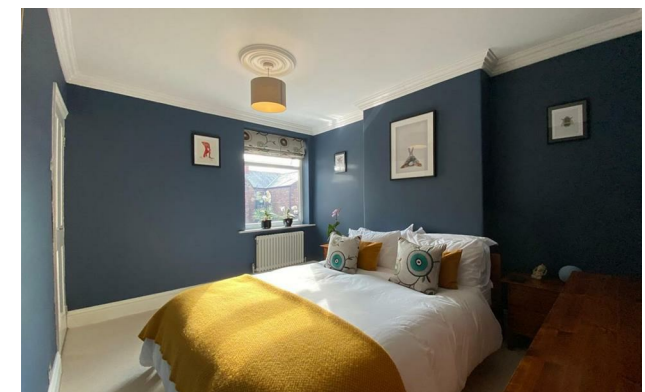
*jordanfishwick*

Reeves Road  
Chorlton



# Reeves Road Chorlton M21 8BU

£2,795 Per Calendar Month



## The Property

\*\*\*\*\* AVAILABLE MAY \*\*\*\*\* Located on a highly sought after road just off Beech Road is this stylish and spacious four bedroom period end terrace property. This splendid property is ideally placed within only a short stroll from the vibrant scene of Beech Road, all local amenities and transport links in Chorlton Village, multiple local parks and in the catchment area for Brookburn Primary School, this wonderful property will prove ideal for a young couple or family. The accommodation briefly comprises: covered porch, entrance hallway, lounge with large bay window, modern kitchen with glass sliding door leading through to the rear sitting room. To the first floor there are two double bedrooms and one smaller bedroom/office, bathroom fitted with a three piece suite and shower over bath. To the second floor there is a spacious and light double bedroom with walk in shower cubicle, WC and Juliet balcony. Double glazing and gas central heating have been installed throughout. Externally, to the front of the property is a walled garden with path to the front door to the rear, a walled courtyard garden with patio and lawn.  
 \*\*\*\*\* To arrange a viewing please call 0161 860 4444 \*\*\*\*\*

## Directions

- Council Tax Band C - EPC D
- 4 Bedroom over 3 Floors
- Part Furnished
- Highly regarded road - Beech Road location
- Stylishly decorated throughout
- En-suite & family bathroom
- Available May

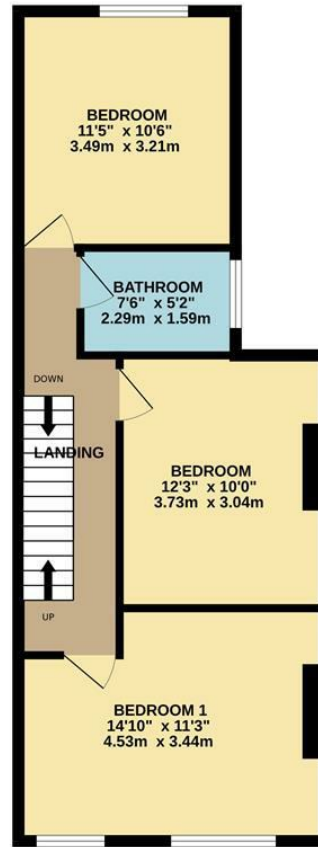
Postcode - M21 8BU  
EPC Rating - D  
Floor Area - sq ft  
Local Authority - Manchester  
Council Tax - C



GROUND FLOOR  
593 sq.ft. (55.1 sq.m.) approx.



1ST FLOOR  
517 sq.ft. (48.1 sq.m.) approx.



2ND FLOOR  
302 sq.ft. (28.1 sq.m.) approx.



TOTAL FLOOR AREA : 1413 sq.ft. (131.2 sq.m.) approx.

Whilst every attempt has been made to ensure the accuracy of the floorplan contained here, measurements of doors, windows, rooms and any other items are approximate and no responsibility is taken for any error, omission or mis-statement. This plan is for illustrative purposes only and should be used as such by any prospective purchaser. The services, systems and appliances shown have not been tested and no guarantee as to their operability or efficiency can be given.  
Made with Metropix ©2026



These particulars are believed to be accurate but they are not guaranteed and do not form a contract. Neither Jordan Fishwick nor the vendor or lessor accept any responsibility in respect of these particulars, which are not intended to be statements or representations of fact and any intending purchaser or lessee must satisfy himself by inspection or otherwise as to the correctness of each of the statements contained in these particulars. Any floorplans on this brochure are for illustrative purposes only and are not necessarily to scale.

Offices at: Offices at Chorlton, Didsbury, Disley, Hale, Glossop, Macclesfield, Manchester Deansgate, Manchester Whitworth Street, New Mills, Sale, Wilmslow and Withington

410-412 Barlow Moor Road, Chorlton, Manchester, M21

01618604444 <sup>8AD</sup>

chorlton@jordanfishwick.co.uk  
www.jordanfishwick.co.uk