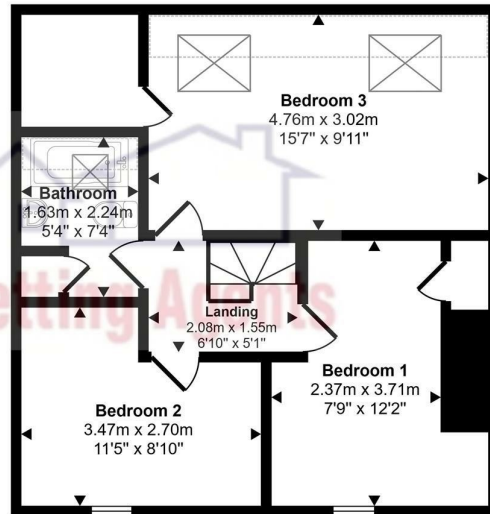
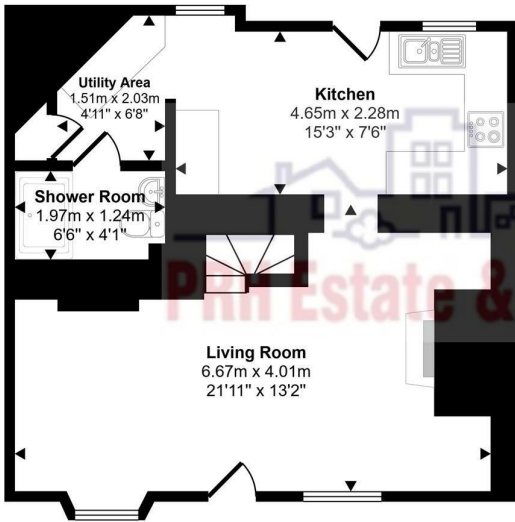




Sheffield

£275,000



First Floor
Approx 45 sq m / 488 sq ft

Ground Floor
Approx 45 sq m / 489 sq ft



The accuracy of these particulars is not guaranteed nor do they form part of any contract. Applicants should verify details by personal examination and enquiry.

PRH is a trading name of PRH Lettings Limited. Registered office: 15 Alverton Street, Penzance, Cornwall, TR18 2QP. Registered in England No. 6667569



4 The Green Market, Penzance, Cornwall, TR18 2SH T: 01736 363816 E:mail@prhpenzance.co.uk

Mouser's Cottage, 12 Long Row
Sheffield
TR19 6UN

£275,000

KEY FEATURES

- Double Fronted Character Cottage
- Comfortable Lounge with a Feature Log Burner
- Ground-Floor Utility Room & Separate Shower Room
- First-Floor Family Bathroom
- Highly Successful Previous Rental History
- EPC Rating - E
- No Onward Chain & Vacant Possession
- Ofcom suggest Superfast Broadband is available
- Ofcom suggest mobile coverage is good on most networks
- Mains Electric, Water & Drainage

DIRECTIONS

From Penzance promenade proceed towards Newlyn. Continue onto New Road and at the bridge go straight ahead onto Chywoone Hill (B3315). Remain on this road as it leads into Sheffield. Mouser's Cottage is located on the right hand side of the road.

Mousers Cottage is a beautiful terraced cottage situated in the quiet, semi-rural hamlet of Sheffield, near Newlyn and Paul. Having been a highly successful and reliable residential let for many years, the property is now being offered to the market with no onward chain and vacant possession.

The cottage features a practical layout with both ground-floor and first-floor facilities, making it an excellent opportunity for first-time buyers looking for a solid home, or investors seeking a turn-key property with a proven rental track record.

