



*jordanfishwick*

Kingsbury Drive

£2,500 PCM



## Kingsbury Drive, Cheshire, SK9 2GU

£2,500 PCM

Occupying a pleasant position amongst the prestigious Regents Park development is his lovely four-bedroom detached family home.

Presented to a high standard throughout with well planned, spacious accommodation and benefitting from a fully enclosed South facing rear garden and a good-sized front driveway leading to the integral garage.

PART FURNISHED and AVAILABLE JUNE

Entrance hallway, cloakroom/wc, lounge with double doors opening into the dining room, conservatory with doors to sunny rear garden with decked area, dining kitchen, utility room.

To the first floor there is a master bedroom with fitted wardrobes and ensuite shower room, three further double bedrooms two with fitted wardrobes and a family bathroom with shower over bath

The property is warmed by gas central heating, with UPVC double glazing also installed.

Contact Wilmslow 01625 536300 £2500.00pcm

COUNCIL TAX G

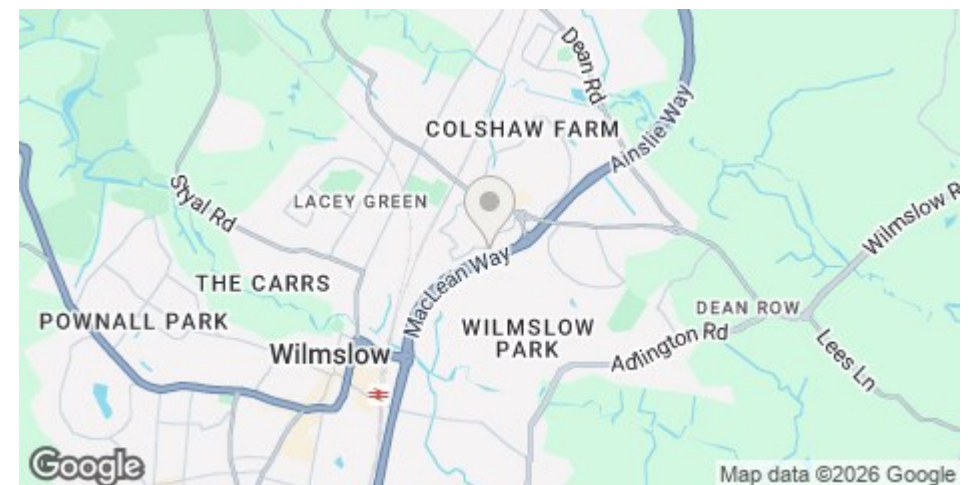
EPC C

### LOCATION

Situated on the popular Kingsbury Park development this four bedroom detached is in prime location for access to the A34 and within walking distance of Wilmslow town centre

### DIRECTIONS

Come off the A34 at the Summerfields roundabout and at the top of the hill take a left hand turn onto the development, follow the road round and the property can be found on the right hand side



- DETACHED
- POPULAR LOCATION
- FOUR BEDROOMS
- TWO BATHROOMS
- CONSERVATORY
- COUNCIL TAX G
- EPC D

Postcode - SK9 2GU

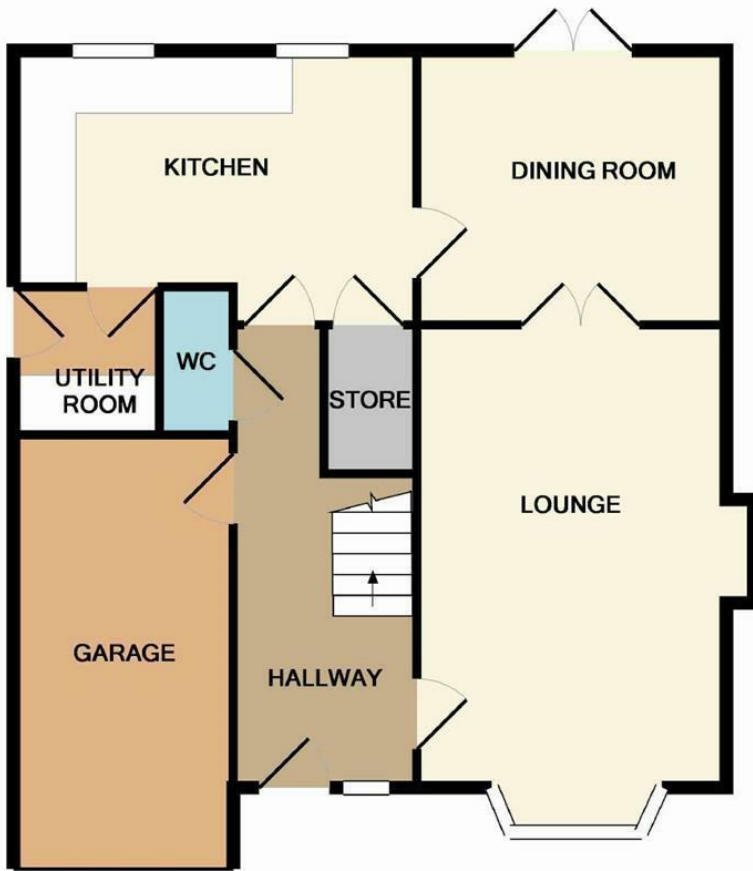
EPC Rating - C

Floor Area - sq ft

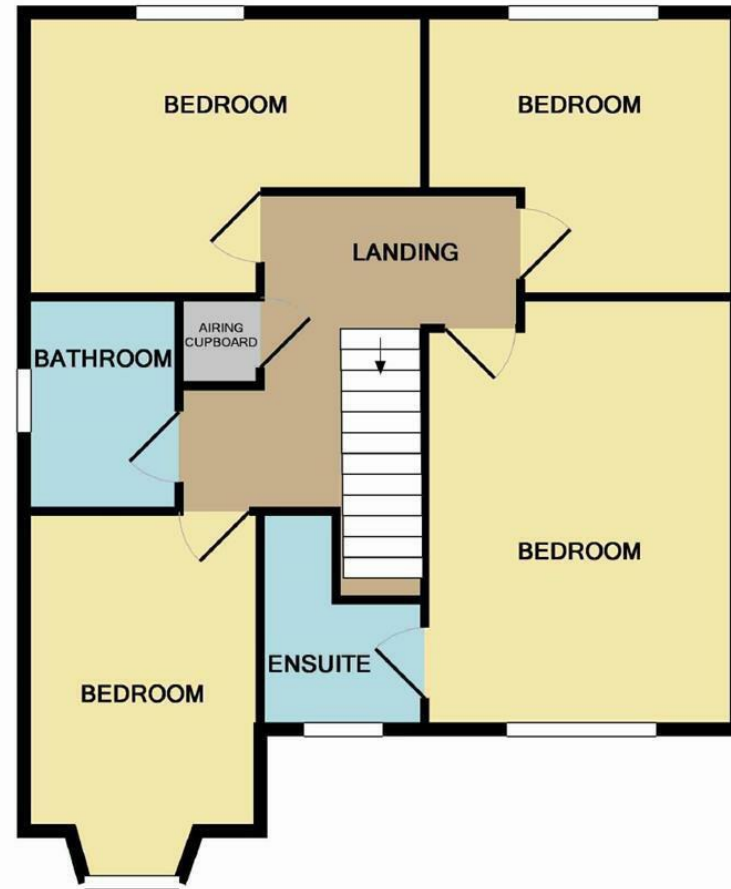
Local Authority - Cheshire East

Council Tax - G





GROUND FLOOR



1ST FLOOR

every attempt has been made to ensure the accuracy of the floor plan contained here, measurements  
 ers, windows, rooms and any other items are approximate and no responsibility is taken for any error,  
 sion, or mis-statement. This plan is for illustrative purposes only and should be used as such by any  
 ctive purchaser. The services, systems and appliances shown have not been tested and no guarantee  
 as to their operability or efficiency can be given  
 Made with Metropix ©2012



These particulars are believed to be accurate but they are not guaranteed and do not form a contract. Neither Jordan Fishwick nor the vendor or lessor accept any responsibility in respect of these particulars, which are not intended to be statements or representations of fact and any intending purchaser or lessee must satisfy himself by inspection or otherwise as to the correctness of each of the statements contained in these particulars. Any floorplans on this brochure are for illustrative purposes only and are not necessarily to scale.

Offices at: Offices at Chorlton, Didsbury, Disley, Hale, Glossop, Macclesfield, Manchester Deansgate, Manchester Whitworth Street, New Mills, Sale, Wilmslow and Withington

01625 536300