

shepherds
A better home
moving experience



2 The Walled Garden Goldings

Hertford, SG14 2WF

Guide Price £1,000,000



2 The Walled Garden Goldings

Hertford, SG14 2WF

SOLD BY SHEPHERDS - Set within the prestigious and gated Goldings Estate, The Walled Garden offers an exceptional opportunity to live in a private development surrounded by over 100 acres of beautifully maintained parkland. This immaculately presented four-bedroom home combines elegant living with practical family space, all in a highly desirable and well-connected location just outside Hertford.

The ground floor features a spacious 30' living room, complete with a characterful fireplace and dual-aspect light, providing a warm and welcoming space for entertaining or relaxing. To the rear, the kitchen/dining room is equally impressive, fitted with a breakfast bar and French doors that open directly onto a landscaped garden-ideal for al fresco dining. There is also a separate utility room with direct access to the garage.

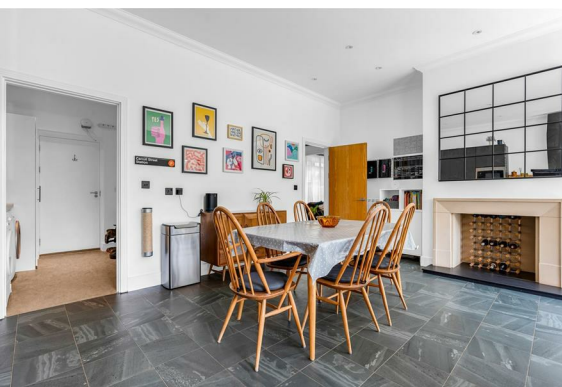
Upstairs, four generously sized bedrooms provide flexible accommodation. The principal suite includes built-in wardrobes, a stylish ensuite bathroom, and a private balcony with far-reaching views across the estate grounds. The second bedroom also benefits from integrated storage, while a contemporary family bathroom serves the remaining bedrooms.

This turnkey home has been maintained to a high standard throughout and enjoys a peaceful position within one of Hertford's most sought-after private developments. Despite its tranquil setting, The Goldings is conveniently located for access to Hertford's amenities, transport links, and excellent schooling.

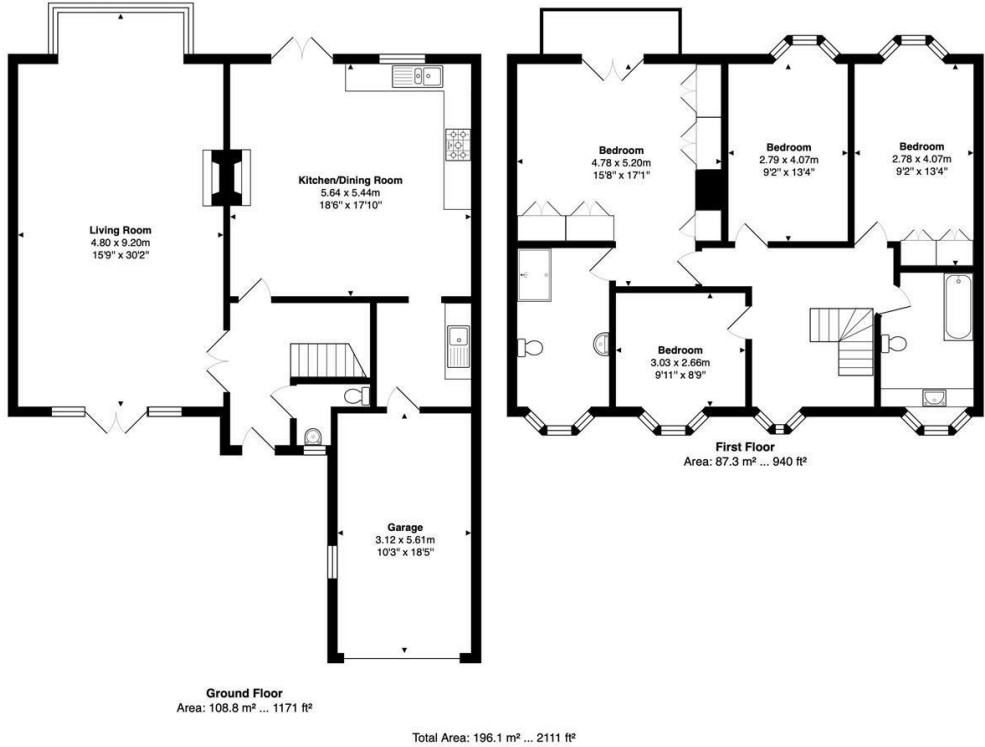




- Set within the prestigious Goldings Estate, surrounded by over 100 acres of private parkland
- Located in a secure gated development, offering privacy and exclusivity
- Immaculately presented four-bedroom family home in turnkey condition
- Generous 30' dual-aspect living room with feature fireplace
- Stylish kitchen/dining room with breakfast bar and French doors to landscaped garden
- Separate utility room with internal access to the garage
- Spacious principal bedroom with en-suite, built-in wardrobes and private balcony
- Additional two double bedrooms with built-in storage
- Beautifully maintained landscaped garden, ideal for outdoor entertaining
- Peaceful countryside setting yet well-connected to Hertford town centre and transport links



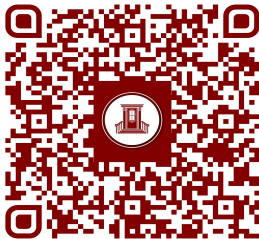
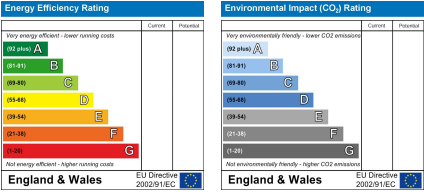
Floor Plan



Viewing

Please contact Shepherds of Hertford on 01992 551955 if you wish to arrange a viewing appointment for this property or require further information.

Energy Performance Graph



These particulars, whilst believed to be accurate are set out as a general outline only for guidance and do not constitute any part of an offer or contract. Intending purchasers should not rely on them as statements of representation of fact, but must satisfy themselves by inspection or otherwise as to their accuracy. No person in this firms employment has the authority to make or give any representation or warranty in respect of the property.

Riverside House, 6 Millbridge, Hertford, SG14 1PY
Tel: 01992 551955 Email: enquiries@shepherdsofhertford.co.uk