

ABBOTSWOOD ROAD, SW16

£2,695,000

- Detached family home
- Six double bedrooms
- Four bathrooms
- Four receptions
- Two parking bays and garage
- Energy rating: D





ABOUT THE HOME

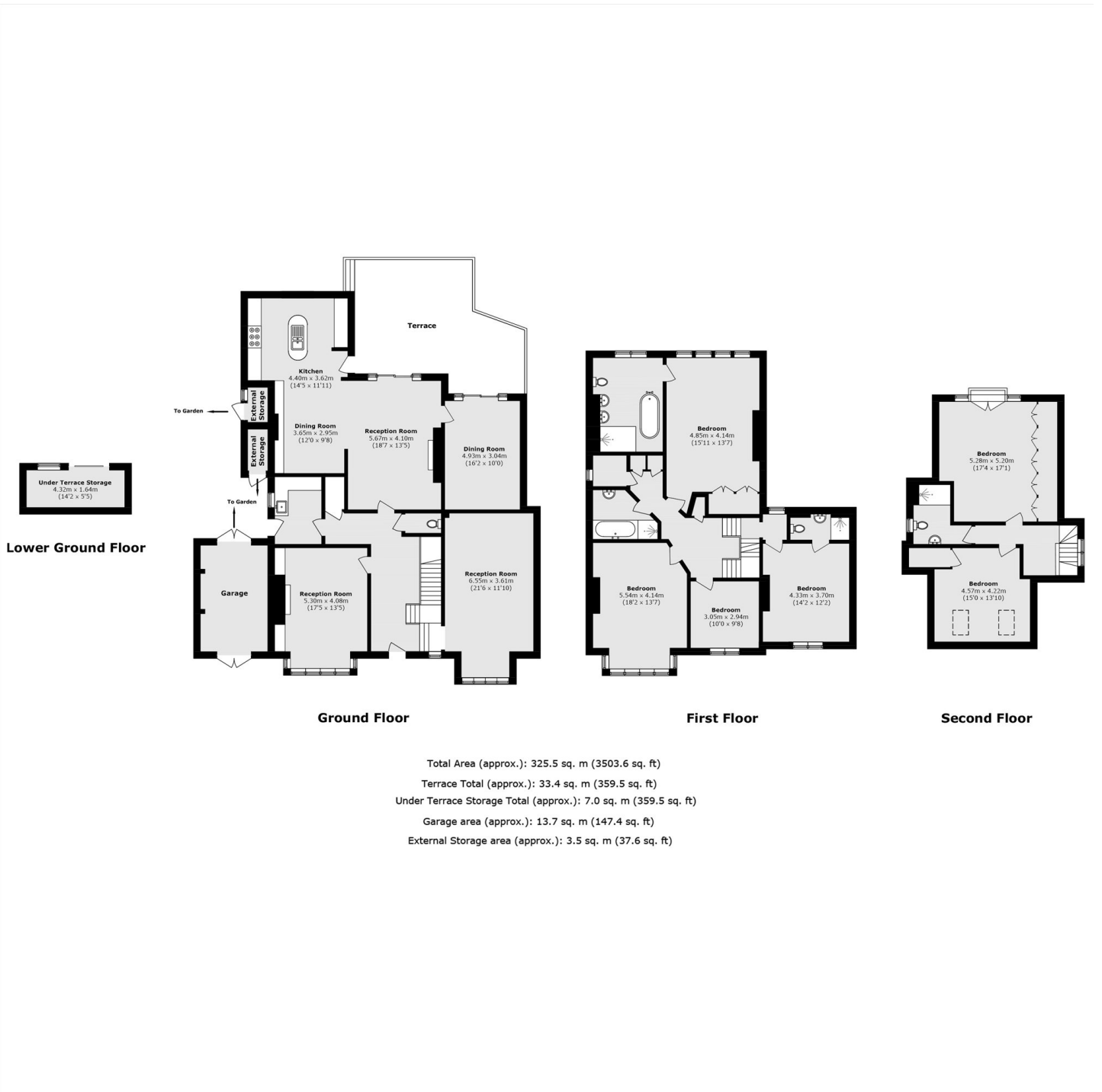
A detached 3500 sq.ft family home located on a highly desirable road, just off Tooting Bec Common. There is abundant living space downstairs, with four reception rooms and a kitchen extension leading out to a large terrace and landscaped garden. Upstairs provides six double bedrooms and four bathrooms. In addition the house benefits from two parking spaces, a spacious garage and backs on to the green spaces of Woodfield recreational ground.



Abbotswood Road is located just off Drewstead road bordering Balham. Streatham Hill, Balham mainline and Balham underground stations are all close by as are the green open spaces of Tooting Bec Common. Residents have access to a range of amenities, including excellent schools and independent coffee shops, pubs, bars and restaurants in Balham and Streatham Hill.







JACKSONS STREATHAM

1-3 De Montfort Parade,
 Streatham High Road,
 Sales: 020 8487 3179
 Lettings: 020 8487 3180

Energy Rating: D We aim to make our particulars both accurate and reliable. However they are not guaranteed; nor do they form part of an offer or contract. If you require clarification on any points then please contact us, especially if you're traveling some distance to view. Please note that appliances and heating systems have not been tested and therefore no warranties can be given as to their good working order.