

# Parkheath

*Sold on Service*

---

**Portobello Road W11**

**£1,800 PCM (£415 per week) - Kensington & Chelsea Band C**



1 bedroom apartment

Situated on the 3rd floor above commercial premises

Wood flooring

Bathroom/WC

Moments from Ladbroke Grove underground

Set in the heart of Portobello Road

Reception room

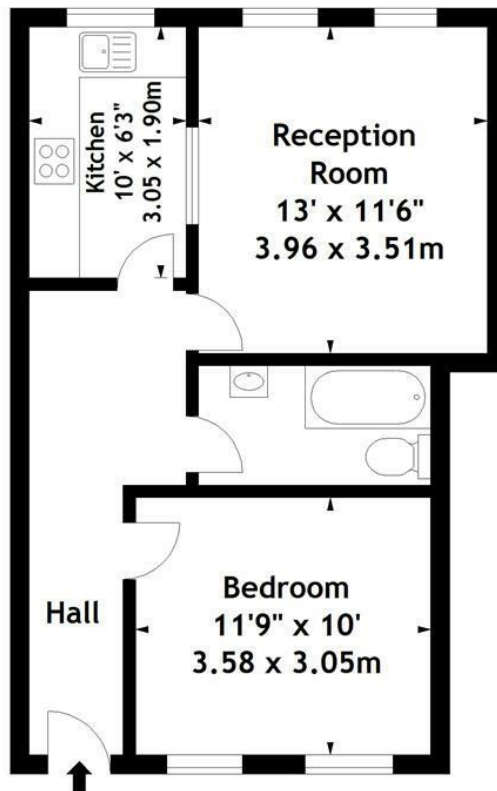
Separate kitchen

Access to a communal terrace

EPC: Rating D, Council Tax: Kensington & Chelsea band C

Kensal Rise Office 0208 960 4845

Portobello Road, W11  
Approx. Gross Internal Area  
493 Sq Ft - 45.80 Sq M



**Third Floor**

Measured in accordance with RICS guidelines. Every attempt is made to ensure accuracy, however all measurements are approximate. This floor plan is for illustrative purposes only and is not to scale.  
© Datography Ltd 2016  
Photographs \* Floorplans \* Virtual Tours  
Tel: 0845 643 4401 [www.datography.com](http://www.datography.com)

The particulars do not constitute part of an offer or contract. The particulars, including text, photographs and plans, are for the guidance only of prospective purchasers/tenants and must not be relied upon as statements of fact. The descriptions provided therein represent the opinion of the author and whilst given in good faith should not be construed as statements of fact. Nothing in these particulars shall be deemed a statement that the property is in good condition or otherwise or that any services or facilities are in good working order. All measurements are approximate