



# 125

— YEARS OF —

**Lambert  
& Foster**



**EDGEHILL**  
HAWKHURST ROAD, CRANBROOK, KENT, TN17 3QD



**Lambert  
& Foster**

STAPLEHURST MLS 7 MILES | TUNBRIDGE WELLS 16 MILES | BEDGEBURY FOREST 3.5 MILES

## **EDGEHILL, HAWKHURST ROAD, CRANBROOK, KENT, TN17 3QD**

An individual, detached, early 1900's double fronted, family house, providing character accommodation arranged over two floors including two receptions rooms with fireplaces, woodburning stove and feature bay windows, kitchen/breakfast/family room with woodburning stove, lean to conservatory, four bedrooms including a main bedroom with an en suite shower room, complemented by established gardens, total plot extending to approximately 0.70 of an acre incorporating a gravel drive and a detached single garage , all occupying a convenient edge of town location. Cranbrook School catchment area.

GUIDE PRICE £900,000

FREEHOLD



### **DIRECTIONS**

Using WHAT3WORDS; [sway.swung.national](https://www.sway.swung.national)



## DESCRIPTION

Edgehill is an individual, detached, double fronted family house 'Arts and Crafts' circa early 1900's, presenting mixed elevations of brick, Kentish Ragstone and weatherboarding, set with a mixture of sealed unit double and single glazed timber casement windows, beneath pitched tiled roofs. The well proportioned, character accommodation, is arranged over two floors with features including two separate receptions rooms with bay windows, comprising a double aspect sitting room with fireplace, tiled inlay and hearth housing a wood burning stove, engineered oak flooring, picture rails, a dining room with fitted antique pine book shelving, an open fireplace with tiled inlay, wooden surround and overmantel, fitted desk top and an aspect to front. The kitchen/breakfast/family room is the heart of the house, with fireplace housing a woodburning stove, bespoke fitted solid wood units, fitted work surface, twin butler sink, Stanley main gas fired range providing domestic hot water, central heating and cooking facility, integral appliances include Bosch dishwasher and a four burner gas hob. The flooring comprises terracotta quarry tiling and engineered oak. A useful utility and pantry includes space and plumbing for a washing machine. A traditional lean to conservatory has a brick floor and is fitted with power and light.

Arranged over the first floor, split level landing are four bedrooms including a main bedroom with views to front across to Bedgebury forest and an en suite shower room, fitted with a white suite. From the landing distance views extend out to front across to Bedgebury Forest. Bedroom two has exposed floorboards and a wash hand basin. Bedroom three has a wash hand basin and a double aspect. Bedroom four also has a double aspect enjoying a fine outlook across the garden. The family bathroom is fitted with a white suite including an enamelled bath.





## GARDENS & GROUNDS

Outside, a gravel drive provides parking for approximately three/four vehicles and includes a detached single stone and timber garage, fitted with double doors, tap, power and light, incorporating a toilet and useful store.

The established gardens are a real feature, the total plot size extending to approximately 0.7 of an acre, laid to lawn, with mature shrubs, trees, fruit trees, brick pathways, ornamental pond with waterfall, kitchen garden area with raised beds, timber potting and garden sheds and beautiful wisteria.

Edgehill benefits from a shared drive to the south, double five bar gates open onto this area of raised garden. The current sellers have used this area in the past for additional parking and had considered a planning application for an ancillary dwelling.



## FLOORPLANS

For identification purposes only. The position and size of doors, windows, appliances and other features are approximate only.





**VIEWING:** By appointment only. **Cranbrook Office:** 01580 712888.

**TENURE:** Freehold

**SERVICES & UTILITIES:**

**Electricity supply:** Mains

**Water supply:** Mains

**Sewerage:** Mains

**Heating:** Mains gas fired central heating

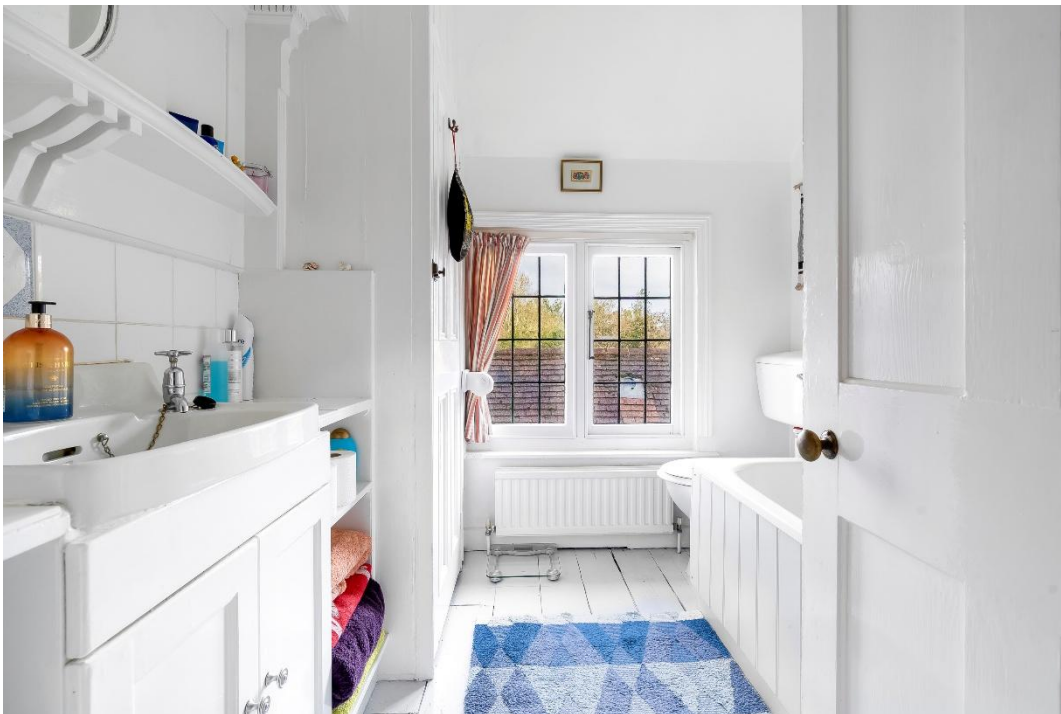
**BROADBAND & MOBILE COVERAGE:**

(Visit <https://checker.ofcom.org.uk/en-gb/broadband-coverage> or enquire with the office for more information).

**LOCAL AUTHORITY:** [www.tunbridgewells.gov.uk](http://www.tunbridgewells.gov.uk)

**COUNCIL TAX:** Band F

**EPC:** D (56)



**PARTICULARS, PLANS AND SCHEDULES:** The particulars and acreages stated, together with the plans are believed but not guaranteed to be correct. They are given by the Agents to assist viewers but are specifically excluded from any contract. Prospective purchasers must satisfy themselves as to the information enclosed.

**IMPORTANT NOTICE:** Lambert & Foster themselves and the vendors and/or lessors of this property whose agents they are, give notice that: The particulars are set out as a general outline only for guidance and do not constitute part of an offer or contract. All descriptions, dimensions, references to condition and necessary permissions for the use and occupation and other details are given in good faith and are believed to be correct. Any intending purchasers/lessees should not rely on them as statements or presentations of fact but satisfy themselves by inspection or otherwise as to the correctness of each of them. If there are any points which are of particular importance to you, please contact the office and we will be pleased to check the information, particularly if you are travelling some distance to view the property.

In accordance with the Consumer Protection from Unfair Trading Regulations 2008 (CPR), we must advise that we have not tested any of the main services, various electrical or gas appliances and fixtures which may be referred to in these sales particulars. Any prospective purchasers are strongly advised to satisfy themselves that such are in working order. No person in the employment of the Agents has any authority to make or give any representations or warranty whatever in relation to this property.

**MONEY LAUNDERING REGULATION:** In accordance with Money Laundering Regulations, we are now required to obtain proof of identification for all vendors and purchasers. You will need to supply information required for us to complete our identification checks which will include your date of birth, main residential address and a colour copy of your passport or photo driving licence. Lambert & Foster apologise for any inconvenience this may cause, but it is a legal requirement. Lambert & Foster will not be able to conclude a sale on your behalf to any person or people who are unable to provide confirmation of identification. Note: Lambert & Foster currently employs the services of Smartsearch to verify the identity and address of vendors/purchasers.



**OFFICES LOCATED AT:**

**PADDOCK WOOD, KENT**

Tel. 01892 832 325  
77 Commercial Road,  
Paddock Wood, Kent TN12 6DS

**WADHURST, EAST SUSSEX**

Tel. 01435 873 999  
Helix House, High Street  
Wadhurst, East Sussex TN5 6AA

**HYTHE, KENT**

Tel. 01303 814 444  
Hillhurst Farm, Stone St,  
Westenhanger, Hythe CT21 4HU

**CRANBROOK, KENT**

Tel. 01580 712 888  
Weald Office, 39 High Street  
Cranbrook, Kent TN17 3DN



**Lambert  
& Foster**



PROPERTY PROFESSIONALS FOR OVER 120 YEARS