



OVER 60?

Secure this property
for up to **59% less!**

Guide Price
£300,000

Freehold

3x  2x  1x 

**Livingstone Road,
Gillingham, Kent, ME7**

Wards
Helping you move forwards



Main features

- Superbly presented extended Victorian terrace house
- Beautifully fitted kitchen with large island
- Upstairs shower room
- Open plan living
- Gas central heating and double glazing

Accommodation

SPLIT LEVEL GROUND FLOOR

Porch
 Dining Area: 14'0 into bay x 13'1 (4.27m x 3.99m)
 Kitchen : 11'5 x 10'2 (3.48m x 3.10m)
 Lounge: 17'6 x 9'3 (5.34m x 2.82m)
 Shower Room

BASEMENT

Cellar : 13'0 x 11'5 (3.97m x 3.48m)

FIRST FLOOR

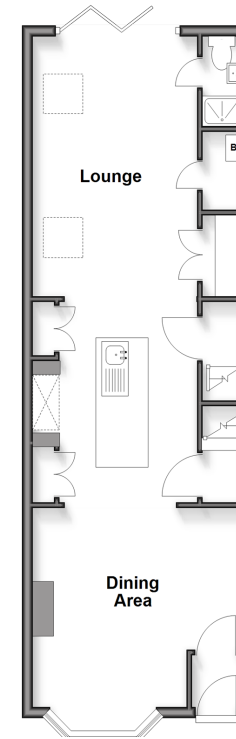
Landing
 Bedroom 1: 13'0 x 11'5 (3.97m x 3.48m)
 Bedroom 2: 11'5 x 8'2 (3.48m x 2.49m)
 Bedroom 3: 8'9 x 7'8 (2.67m x 2.34m)
 En-suite Shower Room

OUTSIDE

Front Garden
 Rear Garden

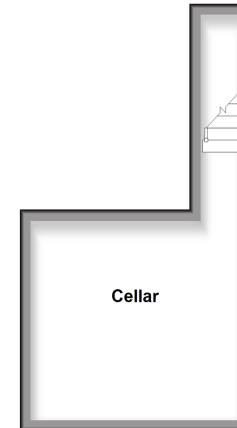
Split Level Ground Floor

Approx. 48.7 sq. metres (523.7 sq. feet)



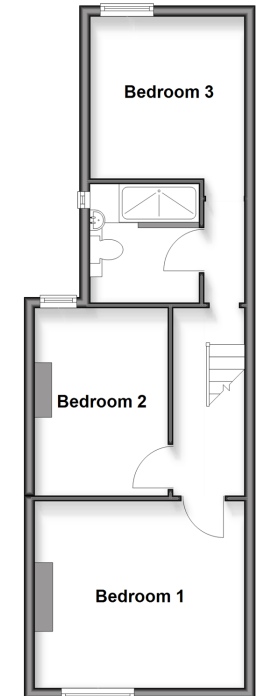
Basement

Approx. 17.2 sq. metres (184.7 sq. feet)



First Floor

Approx. 42.9 sq. metres (461.3 sq. feet)



Call Gillingham - 01634 851191 ■ wardsofkent.co.uk

■ Legal advice should be taken to verify fixtures/fittings, planning, alterations and/or lease details
 ■ Through a Homewise Home For Life Plan people aged 60+ can secure this property for up to 59% less, by purchasing a Lifetime Lease

■ Appliances & services are untested, dimensions are approximate and floor plans are not to scale



10927708/20260309/ML/GS