

SW19

it's all in the postcode...



**Arthur Road
Wimbledon**

Monthly Rental Of £1,500

- One double bedroom
- Close to local shops
- Great location
- Available from 13th March
- Unfurnished
- Short walk to Wimbledon Park
- Council tax Band C
- EPC Rating C



020 8544 2828

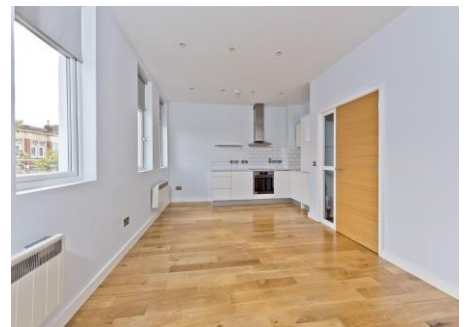
Wimbledon: Wimbledon Park: Colliers Wood

www.SW19.com

SW19 Estate Agents Ltd. Is registered in England & Wales No. 05508737

it's all in the postcode...

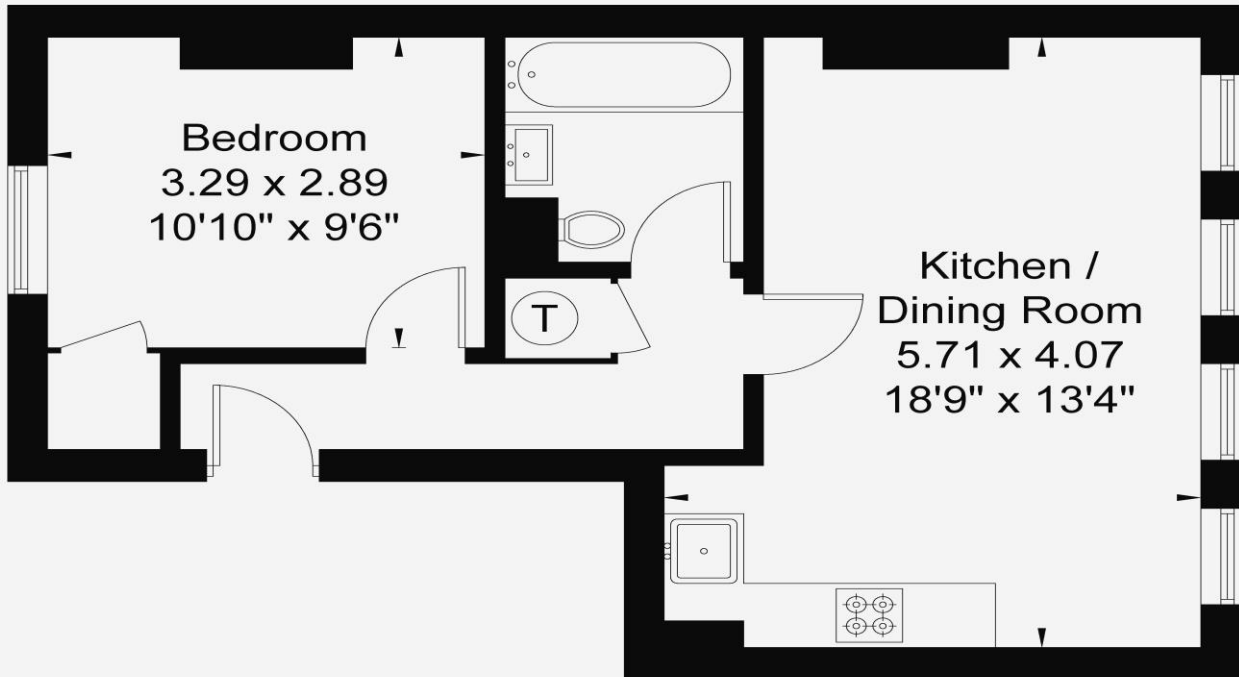
This well located one double bedroom second floor flat in a prime position in Wimbledon Park only moments from the district line. Close to local shops and only a short walk to the lovely Wimbledon Park, which is always handy for those Sunday mornings. Available from 13th March and unfurnished.



020 8544 2828
Wimbledon: Wimbledon Park: Colliers Wood
www.SW19.com
SW19 Estate Agents Ltd. Is registered in England & Wales No. 05508737

'it's all in the postcode...'

Arthur Road SW19
Approximate Gross Internal Area = 41 sq m / 441 sq ft



Second Floor
41 sq m / 441 sq ft

www.epc.uk.com info@epc.uk.com
Not to scale, for guidance only and must not be relied upon as a statement of fact. All measurements and areas are approximate only and have been prepared in accordance with the current edition of RICS code of Measuring Practice.

These particulars are for guidance only and should not be relied upon as a statement or representation of fact. All measurements given are approximate only and should not be relied upon for ordering carpets, equipment etc. Purchasers should satisfy themselves by inspection or otherwise as to the accuracy of the statements contained within. Neither SW19 estate agents ltd or related companies or their employees can confirm structural conditions of the property or that any appliances or other facilities are in working order. Purchasers are strongly recommended to arrange their own survey.

020 8544 2828
Wimbledon: Wimbledon Park: Colliers Wood
www.SW19.com
SW19 Estate Agents Ltd. Is registered in England & Wales No. 05508737

'it's all in the postcode...'