



Claverton Street, SW1V

£775,000

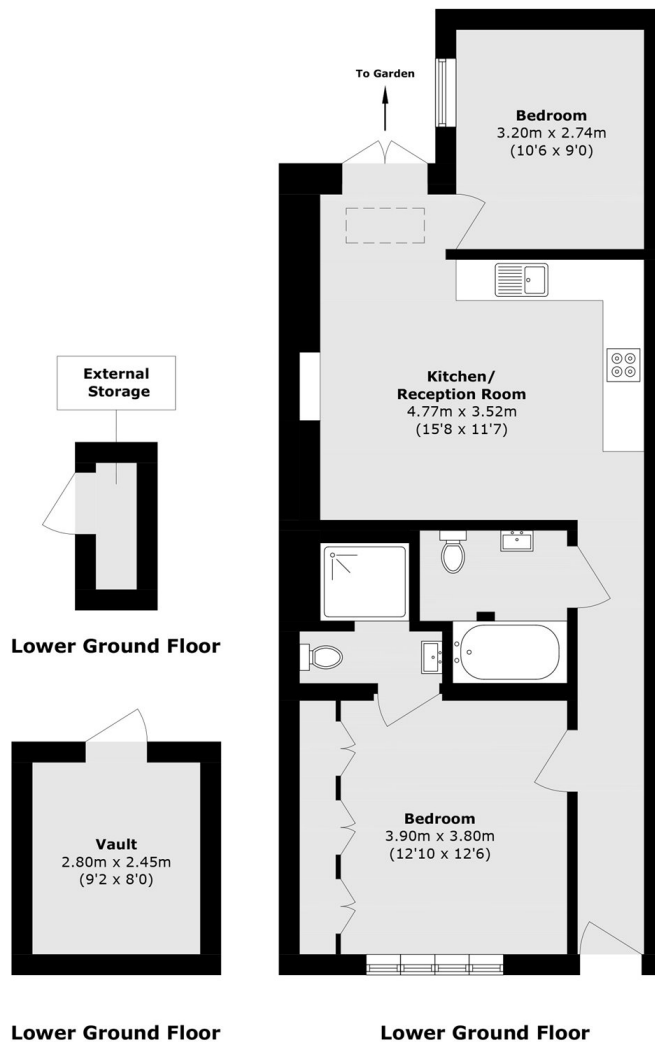
A wonderfully bright and well presented, two double bedroom, two bathroom garden flat situated within a well maintained stucco-fronted period conversion. This property would make an excellent home or investment.

Claverton Street has an ideal central London location moments from the River Thames, with the gardens of St George's Square a short walk away and the amenities of Pimlico, Victoria and Chelsea's Sloane Square all close by. The apartment is conveniently located for the London Underground transport links at both Pimlico (Victoria Line) and Victoria Station (Circle, District and Victoria Lines), which also offers National Rail services.

Features

- Two Bedrooms
- Two Bathrooms
- Private Garden
- Open Plan
- Share Of Freehold
- Pimlico Station

Claverton Street, London, SW1V



Total area (approx.): 62.5 sq. m (672.8 sq. ft)
External storage area (approx.): 8.0 sq. m (86.1 sq. ft)