



**Clinton Close, Coxheath, Maidstone, ME17 4DZ**  
**Offers In The Region Of £350,000**



**\*\*\*NO FORWARD CHAIN\*\*\*THREE BEDROOM SEMI-DETACHED HOME WITH DRIVEWAY, CONSERVATORY & UTILITY ROOM.**

Situated in the sought-after village of Coxheath, this three-bedroom semi-detached home offers spacious accommodation, a private driveway, and a generous rear garden.

The ground floor offers a welcoming entrance hall, a bright and generously sized lounge/dining area, a rear conservatory, and a kitchen which overlooks the garden, along with a practical utility room and a convenient downstairs cloakroom.

Upstairs, the property features three well-proportioned bedrooms and a family bathroom.

While well maintained, the home presents an excellent opportunity for buyers to modernise and personalise to their own taste.

Coxheath is a popular residential village located just a few miles from Maidstone, offering a strong community feel alongside a range of local amenities. These include independent shops, a primary school, GP surgery, library, and regular bus services. Surrounded by attractive countryside, the area combines everyday convenience with a village lifestyle—ideal for families and commuters alike.

Early viewing is highly recommended. Contact Page & Wells Loose Office today to arrange your appointment.



**GROUND FLOOR**

Entrance Hall 11'1" x 7'8" (3.38m x 2.35m)

Lounge 13'3" x 13'0" (4.05m x 3.98m)

Dining Room 13'3" x 8'6" (4.06m x 2.60m)

Kitchen 14'7" x 13'2" (4.45m x 4.02m)

Utility Room 10'1" x 5'2" (3.08m x 1.58m)

Conservatory 11'5" x 8'2" (3.50m x 2.50m)

WC

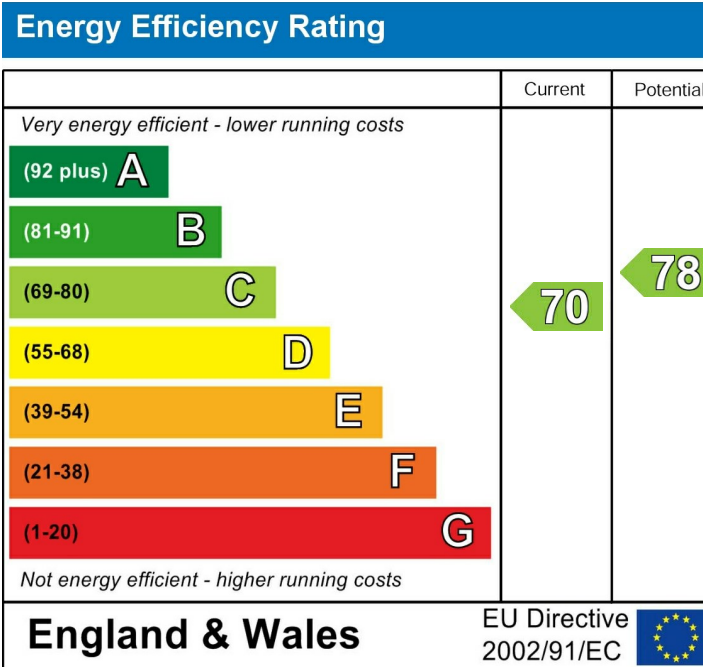
**FIRST FLOOR**

Bedroom 1 13'3" x 13'2" (4.05m x 4.03m)

Bedroom 2 13'3" x 8'4" (4.05m x 2.55m)

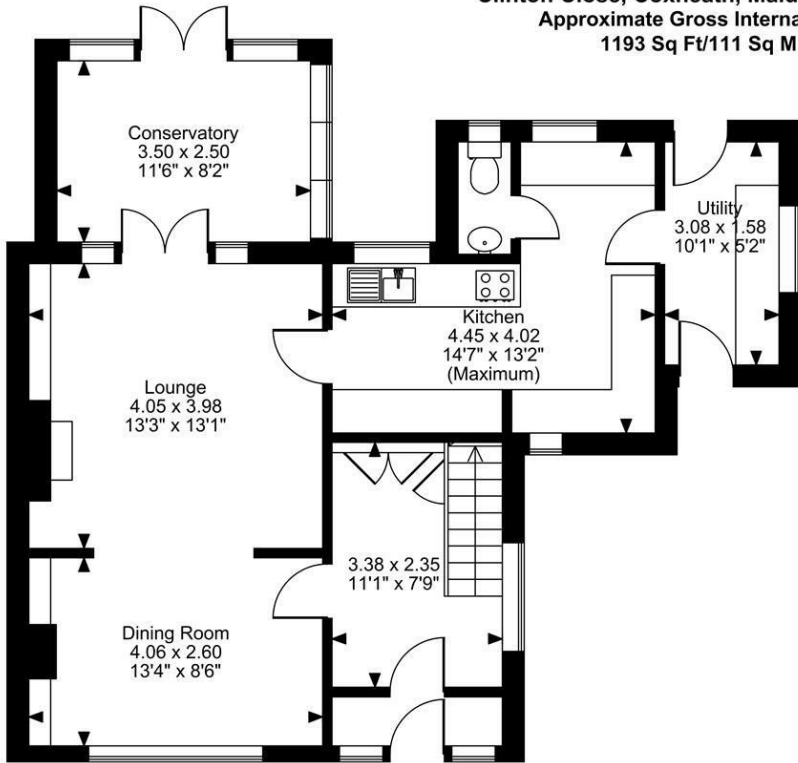
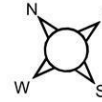
Bedroom 3 9'8" x 7'8" (2.96m x 2.35m)

Family Bathroom

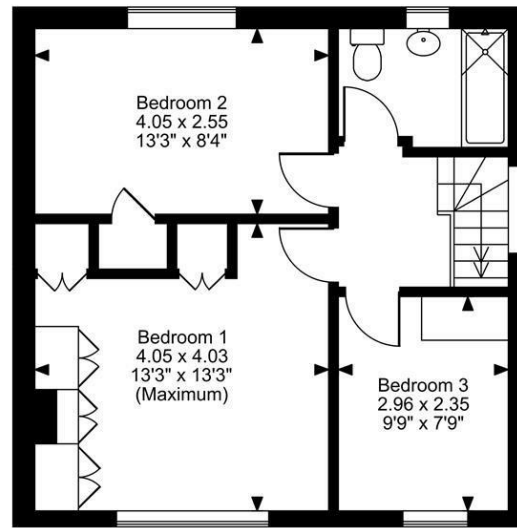


Page & Wells limited for themselves and for the vendors of this property whose agents they are give notice that: 1. These particulars do not constitute any part of, an offer or a contract. 2. All statements contained in these particulars as to this property are made without responsibility on the part of Page & Wells Limited or the Vendor. 3. None of the statements contained in these particulars as to the property is to be relied on as statements or representations of fact. 4. Any intending purchaser must satisfy himself by inspection or otherwise as to the correctness of each of the statements contained in these particulars. 5. The vendor does not make or give, and neither Page & Wells Limited nor any person in their employment has any authority to make or give any representation whatsoever in relation to this property. These particulars are supplied on the understanding that all negotiations are carried out throughout Page & Wells Limited. Properties with a reference prefixes EAA are those which Page & Wells Limited disclose an interest in accordance with the provisions of the Estates Agents Act 1979

Clinton Close, Coxheath, Maidstone, Kent  
Approximate Gross Internal Area  
1193 Sq Ft/111 Sq M



Ground Floor



First Floor

**FOR ILLUSTRATIVE PURPOSES ONLY - NOT TO SCALE**

The position & size of doors, windows, appliances and other features are approximate only.  
© ehouse. Unauthorised reproduction prohibited. Drawing ref. dig/8683173/LCO

