



Avery Walk, SW11

£1,450,000

A uniquely designed family home with off-street parking, three bedrooms, two bathrooms and two reception rooms. There is plenty of outside space with two terraces on the lower ground and second floor as well as a large roof terrace with views across London.

Located just off of Clapham Common Northside, while the green open spaces of Clapham Common, Wandsworth Common & Battersea Park are also nearby. Transport is easily accessible via Clapham Junction Station.

Features

- Freehold Family Home
- Allocated Parking Space
- Three Double Bedrooms
- Two Bathrooms
- Two Reception Rooms
- Rooftop Terrace With Views



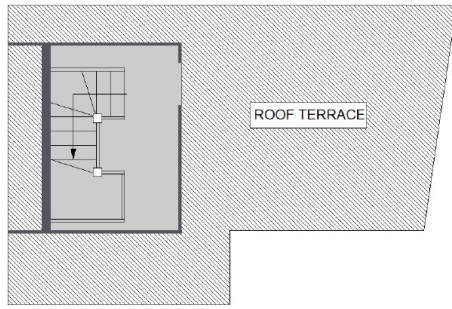
Avery Walk, SW11

On the lower ground floor, you have a large kitchen/diner with a terrace, as well as a utility room. The ground floor has another reception room which could be re-purposed as a fourth bedroom if the purchaser so desired as well as a downstairs W.C.

The first floor has two double bedrooms with one bathroom and the second floor has a master bedroom suite with balcony. On the top floor where you have a large rooftop terrace with views over The Shard and Battersea Power Station which faces directly south and is bathed in light for most of the day. Avery Walk has been designed by award-winning developer Fruition Properties.

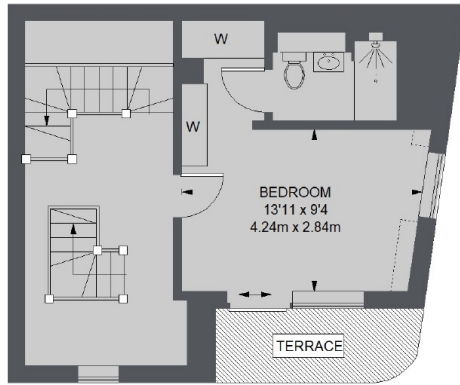


Avery Walk, Battersea, SW11

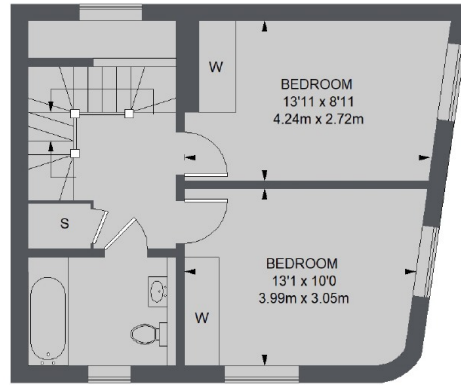


ROOF TERRACE

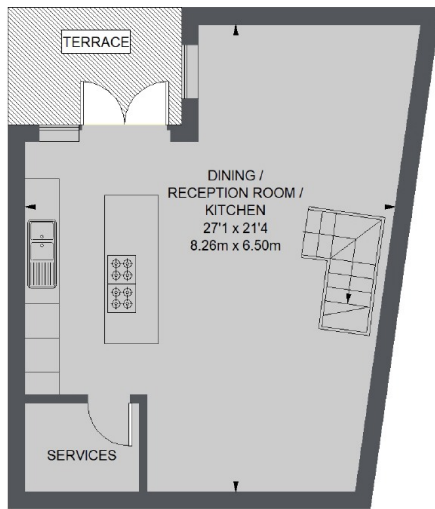
= REDUCED HEADROOM BELOW 1.5 M / 5'0



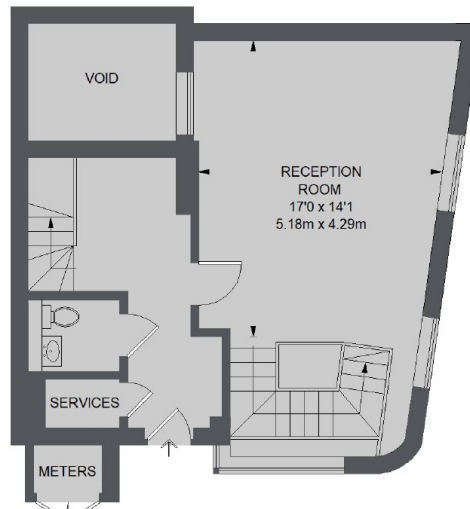
SECOND FLOOR



FIRST FLOOR



LOWER
GROUND FLOOR



GROUND FLOOR

TOTAL APPROX. FLOOR AREA (EXCLUDING VOID) 1795 SQ. FT. (166.77 SQ. M.)