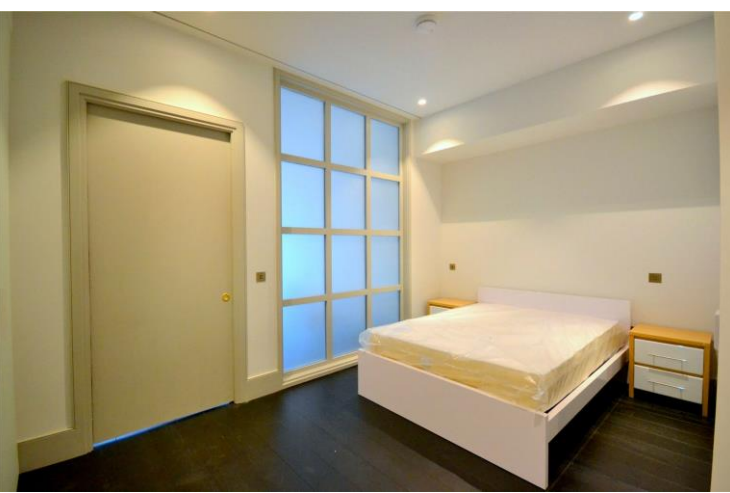
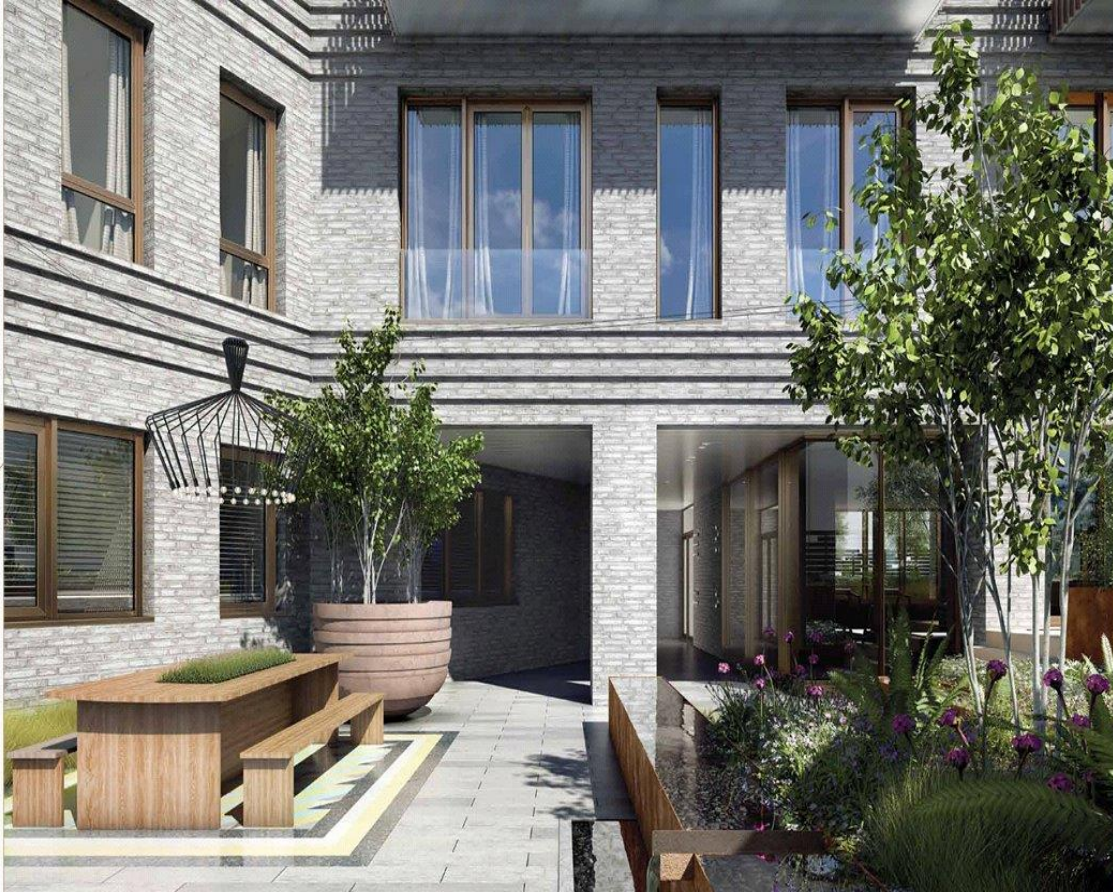




Victoria Street
Westminster, SW1H

CHESTERTONS





Video Viewing Available

A beautifully finished Manhattan style apartment which benefits from open plan living space with wide floor-to-ceiling windows, designer Italian kitchen, modern bathroom and oak wood floors and hand glazed terracotta tiles.

- A spacious Manhattan style apartment on the 1st floor of this brand new development
- 24-hour concierge, gymnasium
- Landscaped rear courtyard and an 8th floor Sky Garden with expansive south facing views
- Exclusive to Chestertons

£2,925 pcm

Additional tenant charges apply (fees apply to non-AST tenancies only)

Tenancy Agreement Fee: £300

References per Tenant/Guarantor: £60

Inventory check (approx. £100 – £250 inc. VAT)

chestertons.co.uk/property-to-rent/applicable-fees

Energy Efficiency Rating		Current	Potential
89-92	A		
81-88	B	83	83
69-80	C		
55-68	D		
49-54	E		
41-48	F		
31-40	G		
Not energy efficient - higher running costs			
England, Scotland & Wales		EU Directive 2002/91/EC	

Minimum Term: 6 months
Deposit Required: 5 weeks
Local Authority: Westminster
Council Tax Band: TBC
EPC Rating: B
Furnished

Chestertons Westminster & Pimlico Lettings

105 Wilton Road
 London
 SW1V 1DZ

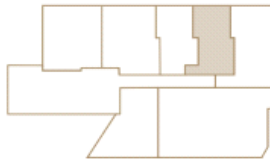
westminsterlettingsusers@chestertons.co.uk
 02030408220
chestertons.co.uk



Apartment 104

Studio First Floor

	sqft	sqm	dims (ft)	dims (m)
Living / Dining / Kitchen	209.9	19.5	13'5" x 15'10"	4.1 x 4.9
Bedroom	146.4	13.6	9'4" x 15'11"	2.9 x 4.9
Net Saleable Area	493.1	46.0		



Floorplans and dimensions are taken from architectural drawings and could vary during construction. They are provided for guidance only and are not to scale. Total Areas provided as gross internal areas under the RICS measuring practice. Layouts are indicative only and subject to change.

Due to the shape of some rooms, all room dimensions are approximate and the longest length and width of each room has been used.

