



# Wycombe Square

Kensington, W8

£4,000 per month  
(£923.08 per week)

A one bedroom first floor apartment to rent in Kensington. This apartment is ideally situated in the sought after Wycombe Square gated development with 24hours security, underground parking and private communal garden.

**CHESTERTONS**



# Wycombe Square

## Kensington, W8

- . New Build
- . Available Furnished
- . Private gated community
- . 24 hour 7 days a week security
- . 7 days week concierge
- . Underfloor heating and air conditioning
- . Private underground parking space
- . Private communal gardens

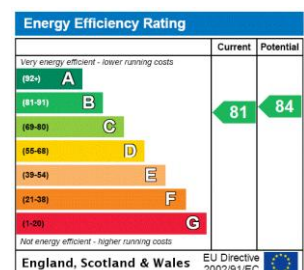


A bright one bedroom flat on the first floor, with lift, in excellent condition in a modern block.

Ideally situated in the sought after gated community of Wycombe Square with 24 hours 7 days a week security & concierge, underground parking and private communal garden. Accommodation comprises 1 bedroom with balcony, bathroom with bath and separate shower, reception room, separate fully fitted kitchen and underfloor heating throughout.

Wycombe Square is located in the heart of Kensington with the local shops, restaurants and amenities of Notting Hill and Kensington

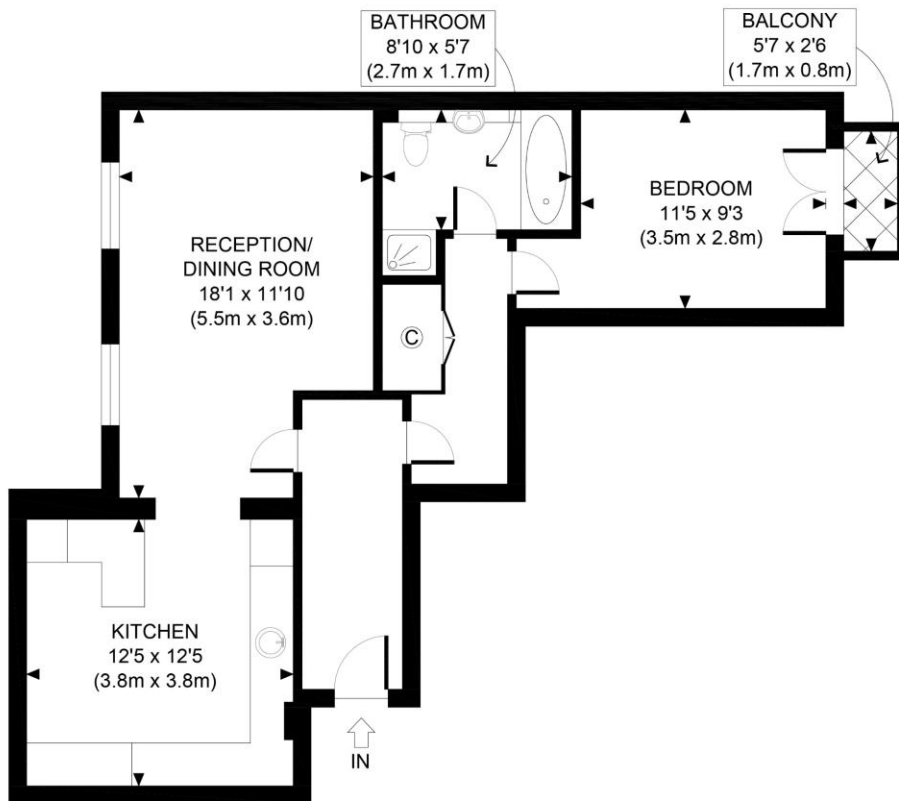
**Minimum Term:** months  
**Deposit Required:** £4,615.38  
**Local Authority:** Royal Borough of Kensington & Chelsea  
**Council Tax Band:** G  
**EPC Rating:** B  
**Part Furnished, Unfurnished**



### Chestertons Kensington Lettings


116 Kensington High Street  
 Kensington  
 London  
 W8 7RW  
 kensingtonlettingsusers@chestertons.co.uk  
 02079377260  
 chestertons.co.uk

Additional tenant charges apply (fees apply to non-AST tenancies only)  
 Tenancy Agreement Fee: £300  
 References per Tenant/Guarantor: £60  
 Inventory check (approx. £100 – £250 inc. VAT)  
 chestertons.co.uk/property-to-rent/applicable-fees



FIRST FLOOR  
GROSS INTERNAL  
FLOOR AREA 671 SQ FT



<p>APPROX. GROSS INTERNAL FLOOR AREA 671 SQ FT / 62 SQM</p>	<p>Wycombe Square, W8</p>
<p>Disclaimer: Floor plan measurements are approximate and are for illustrative purposes only. While we do not doubt the floor plan accuracy and completeness, you or your advisors should conduct a careful, independent investigation of the property in respect of monetary valuation</p>	<p>date 30/07/20</p>
	<p>photoplan </p>

Chesterton UK Services Limited trading as Chestertons for themselves and for the vendor of this property whose agents they are, give notice that (i) these particulars do not constitute any part of an offer or contract, (ii) all statements contained within these particulars are made without responsibility on the part of Chestertons or the vendor, (iii) whilst made in good faith, none of the statements contained within these particulars are to be relied upon as a statement or representation of fact, (iv) any intending purchasers must satisfy themselves by inspection or otherwise as to the correctness of each of the statements contained within these particulars, (v) the vendor does not make or give either Chestertons or any person in their employment any authority to make or give representation or warranty whatsoever in relation to this property. Wide angle lenses may be used. ©Copyright Chestertons | Chesterton Global Ltd | Registered Office 5th Floor, The Lantern, 75 Hampstead Road, London, NW1 2PL Registered Company Number 05334580.



This paper is  
100% recyclable