

Highbury Stadium Square, N5

£450,000

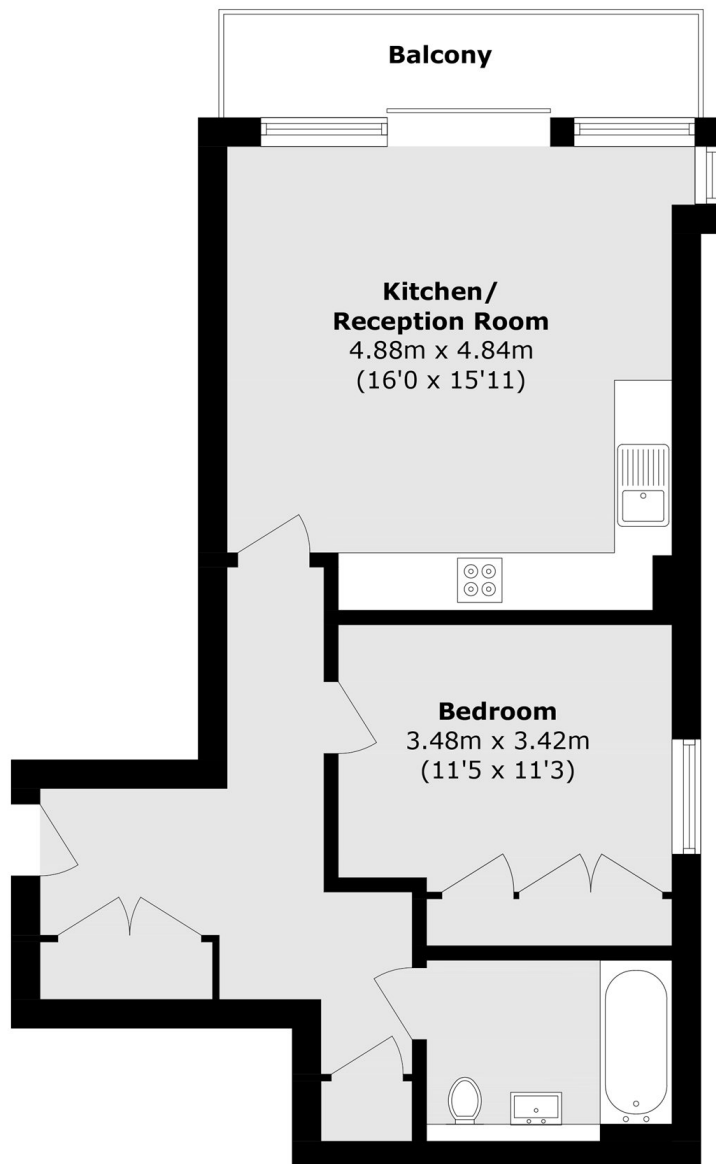
A bright, pitch-facing one bedroom apartment in the sought after Highbury Stadium Square development. This property benefits from a large south facing balcony, open-plan kitchen living space and plenty of storage. On site there is a 24 hour concierge service and well manicured communal gardens.

At under half a mile from Arsenal tube station (Piccadilly line) and Drayton Park station (Great Northern Line) there are numerous connections to The City and beyond. The restaurants, shops and independent cafés of Highbury Barn and Highbury Park are also within easy reach.

Features

- One Bedroom
- Pitch Facing
- Gated Development
- South Facing Balcony
- Concierge
- Chain Free

Highbury Stadium Square, London, N5



Total area (approx.): 51.1 sq. m (550.0 sq. ft)
Balcony area (approx.): 5.3 sq. m (57.0 sq. ft)