



Stoneacre
Properties

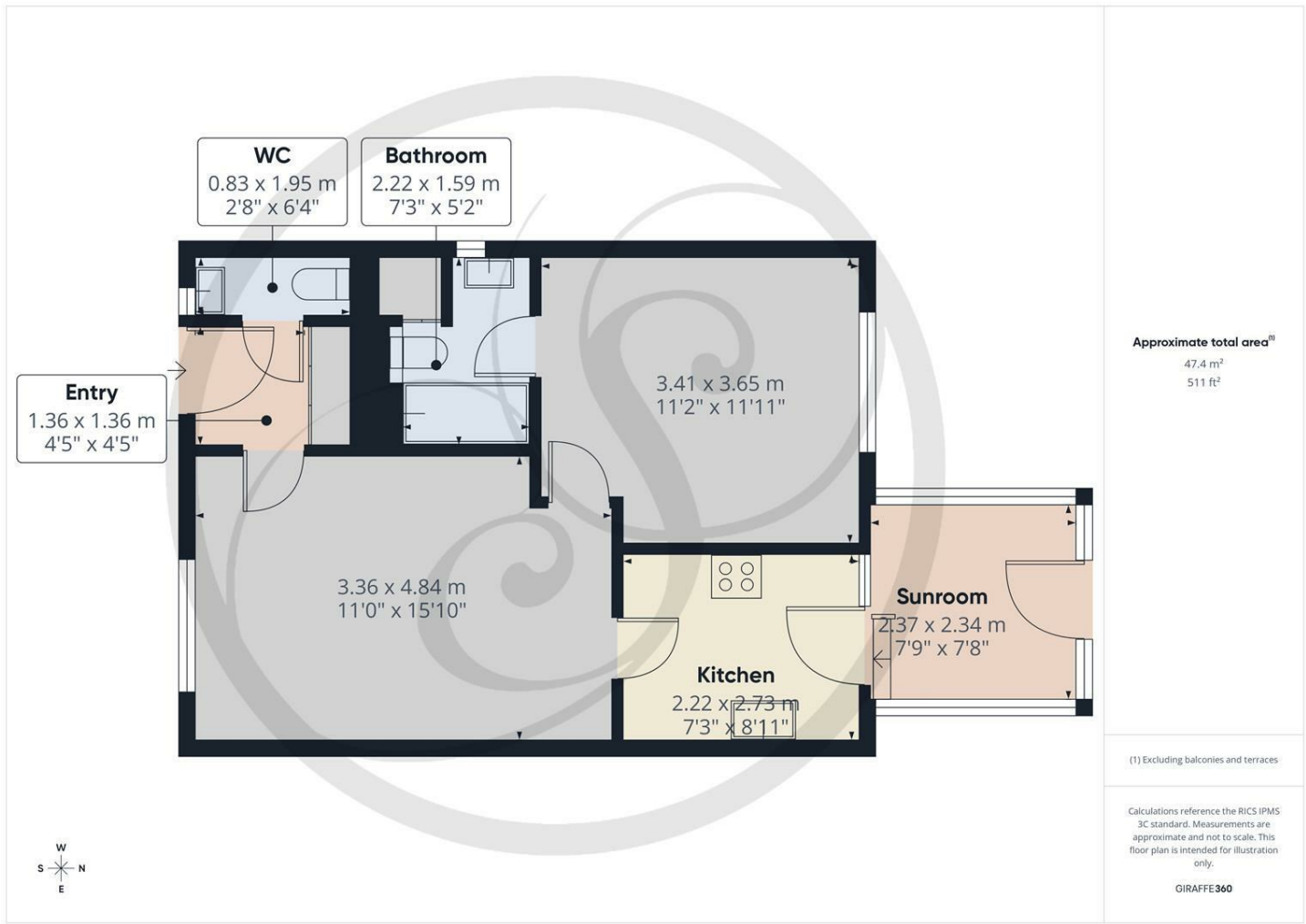


Osprey Grove, Leeds, LS17 8XD

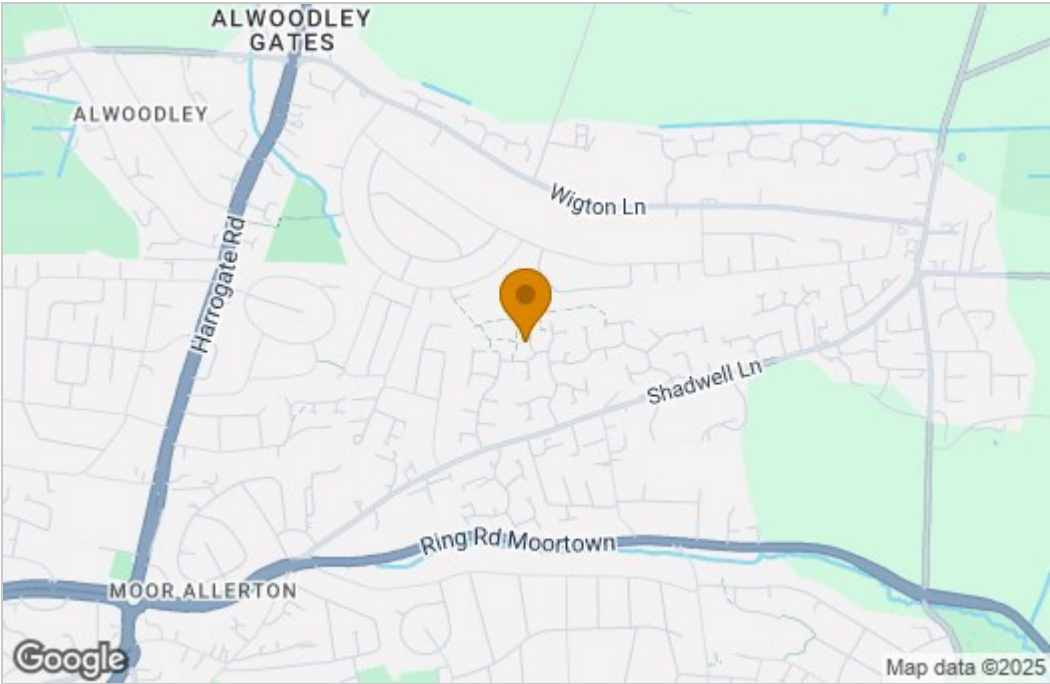
£975 Per Calendar Month

Perfect ONE BEDROOM bungalow with CONSERVATORY and GUEST WC for couples or a single professional looking to live in North Leeds. SUN TRAP GARDEN AND OFF ROAD PARKING FOR TWO CARS to the front and rear. Sizeable lounge and neutral modern kitchen and bathroom. Fully redecorated throughout with brand NEW FLOORING to the bedroom and NEWLY FITTED DOUBLE GLAZING TO BEDROOM AND LIVING ROOM. Light and airy home which is easy to heat up in winter and equally enjoyable in the summer due to the private garden. The bungalow is the perfect quiet setting which looks onto parkland to the rear. Fantastic location, close to the Inner Ring Road with easy access into the City and beyond. Local amenities close by such as Shadwell Village, Roundhay Park, Moortown Corner and M&S Food Hall and Street Lane. Offered UNFURNISHED, and IMMEDIATELY AVAILABLE. Council Tax Band: B. EPC Rating: C

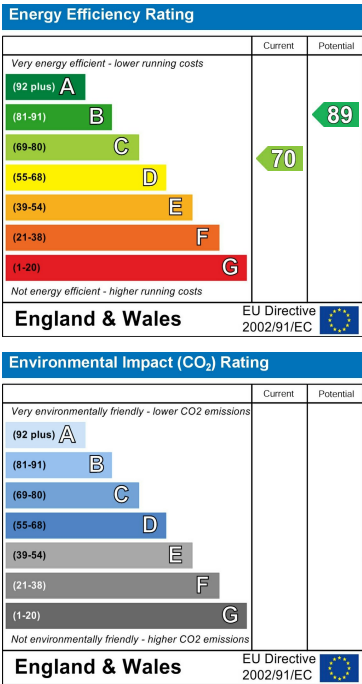
Floor Plan



Area Map



Energy Efficiency Graph



These particulars, whilst believed to be accurate are set out as a general outline only for guidance and do not constitute any part of an offer or contract. Intending purchasers should not rely on them as statements of representation of fact, but must satisfy themselves by inspection or otherwise as to their accuracy. No person in this firm's employment has the authority to make or give any representation or warranty in respect of the property.

