



Oakhurst Grove, SE22

£525,000

A two bedroom flat situated on the second floor of a charming Victorian building on the sought after Oakhurst Grove. The flat is presented beautifully and comes with a share of the freehold.

Oakhurst Grove is a quiet tree-lined street perfectly placed for the open spaces of Peckham Rye Park and Goose Green. Lordship Lane is within easy reach providing an array of shops, restaurants and bars whilst rail links into Zone One can be found from East Dulwich and Peckham Rye stations.

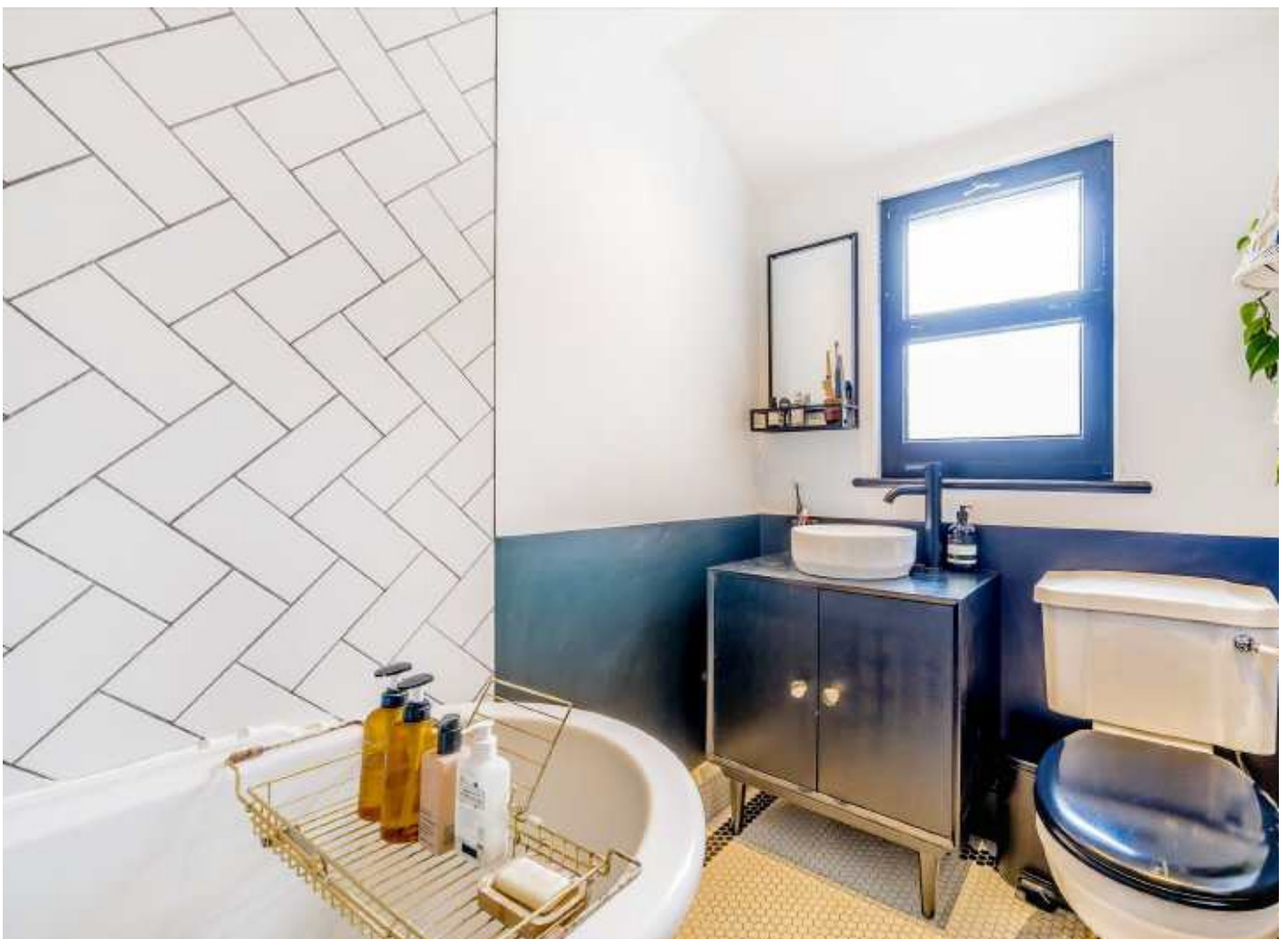
Features

- Two Bedrooms
- Excellent Location
- Great Condition
- Share Of Freehold
- Top Floor
- Victorian Conversion

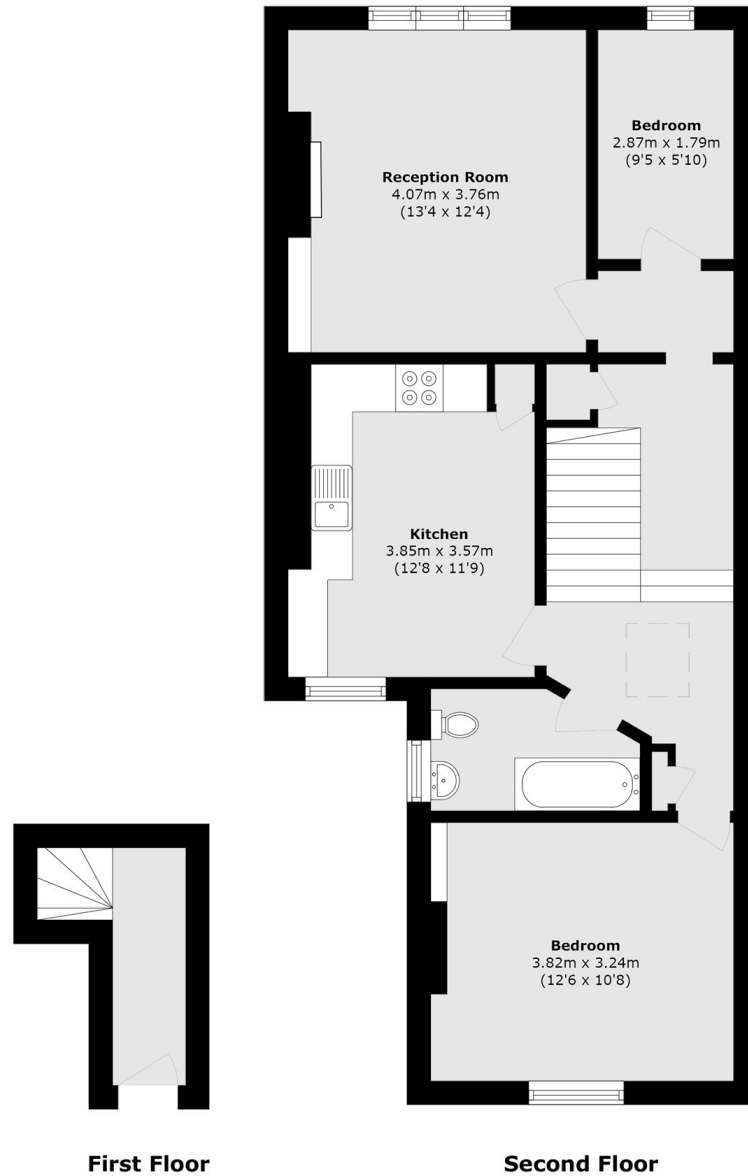


Oakhurst Grove, SE22

The upper level opens into a generous reception room, centred around a charming character fireplace and large windows enhance the sense of light. Also on this level is a bedroom that is ideal as a guest room, nursery or home office. The lower level features a superb top-specification kitchen, finished to a high standard with contemporary cabinetry, quality worktops and integrated appliances. The layout offers ample storage and preparation space, with plenty of room for a dining table. A spacious principal bedroom can be found to the rear of the property, complemented by a well-appointed family bathroom positioned conveniently off the hallway.



Oakhurst Grove, London, SE22



Total area (approx.): 69.0 sq. m (742.7 sq. ft)