

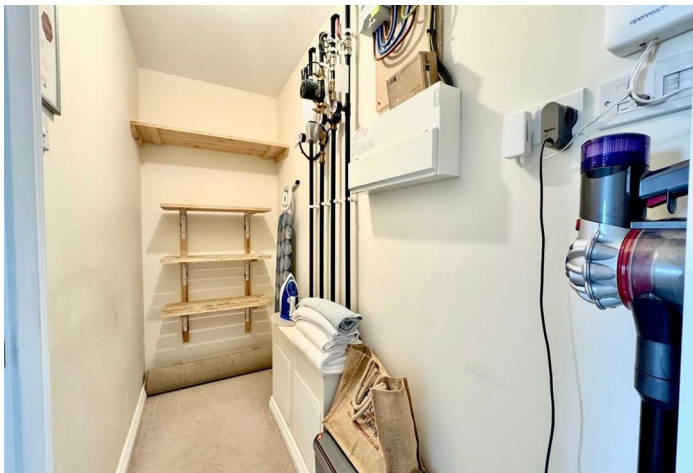


35 Hubert Lodge

Hythe, SO45 6GS

- OVER 60's RETIREMENT PROPERTY
- 24 HOUR CARELINE SYSTEM
- COMMUNAL LOUNGE & KITCHEN
- SIZABLE BALCONY
- MANAGER ON SITE MONDAY TO FRIDAY
- ONE DOUBLE BEDROOM
- COMMUNAL GARDENS
- BATHROOM WITH ACCESSIBLE SHOWER
- VILLAGE CENTRE LOCATION
- BUILT NEW IN 2020

£260,000 Leasehold





Living Room

17'05 x 11'04

A spacious and inviting living room offering plenty of room for both seating and dining areas. Double glazed doors open onto a sizable balcony, allowing for an abundance of natural light and creating a seamless connection between the indoor and outdoor living spaces.



Kitchen

7'04 x 6'10

Accessed directly from the living room, the kitchen is well laid out and functional, offering ample space for food preparation and storage. A window provides natural light and ventilation, creating a bright and pleasant cooking environment.

Bedroom

12'10 x 9'09

A well-proportioned double bedroom offering ample space for a double bed and additional furniture. The room benefits from a walk-in closet, providing excellent storage, while a large window allows plenty of natural light to fill the space, creating a bright and comfortable atmosphere.



Bathroom

6'06 x 5'01

A well-appointed bathroom featuring a spacious accessible shower, along with a toilet and wash hand basin.





Local Authority **NFDC**
Council Tax Band **B**
EPC Rating **B**

Citrine Estates Office

7 High Street, Hythe, Southampton,
SO45 6AG

Contact

023 81980 023
christina@citrine-estates.co.uk
www.citrine-estates.co.uk

Agents Note: Whilst every care has been taken to prepare these particulars, they are for guidance purposes only. All measurements are approximate and for general guidance purposes only and whilst every care has been taken to ensure accuracy, they should not be relied upon and potential buyers/tenants are advised to recheck the measurements.