

**LONDON
VICTORIA
GROUPS** 



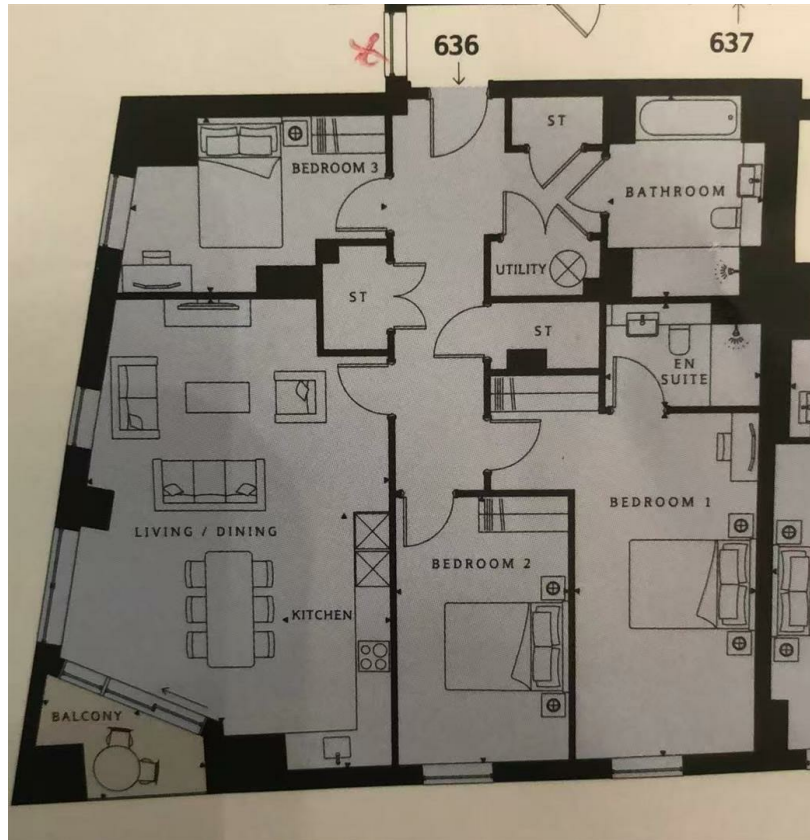
Gladwin Tower, 50 Wandsworth Road

, London SW8 2FU

- Three-bedroom, two-bathroom apartment
- 24-hour concierge service
- Private cinema room
- Ideally positioned between Vauxhall, Nine Elms, and Battersea
- CTB-G
- Open-plan living and dining area
- Residents' gymnasium and fitness facilities
- Residents' lounge
- EPC-B

£5,634 Per Month

Local Authority **Lambeth**
Council Tax Band **G**
EPC Rating **B**



LONDON
VICTORIA
GROUPS



LONDON
VICTORIA
GROUPS



LONDON
VICTORIA
GROUPS

London Office Office

Spaces Victoria, 25 Wilton Road, Pimlico,
London, SW1V 1LW

Contact

020 3084 3094
XL@londonvictoriagroups.co.uk
www.londonvictoriagroups.co.uk

Agents Note: Whilst every care has been taken to prepare these particulars, they are for guidance purposes only. All measurements are approximate and for general guidance purposes only and whilst every care has been taken to ensure accuracy, they should not be relied upon and potential buyers/tenants are advised to recheck the measurements.