



Webbs
Helping people move since 1994

Kinglet Way | Cannock | WS11 9BD

Offers Over £455,000

 **Webbs**
estate agents

Summary

**** SPACIOUS FIVE BED DETACHED FAMILY HOME ** EN-SUITE TO MASTER ** GREAT SIZED RECEPTION ROOMS ** OPEN PLAN KITCHEN/DINER ** STUNNING VIEWS ****

WEBBS ESTATE AGENTS are delighted to welcome Kinglet Way to market in Norton Canes, Cannock. This modern and spacious five-bedroom detached house offers an ideal family home. Upon entering, you are greeted by a great sized reception rooms perfect for both relaxation and entertaining guests. The heart of the home is undoubtedly the contemporary open plan kitchen and dining area, which provides a wonderful space for family meals and gatherings.

The property boasts a well-appointed utility room and a convenient guest cloakroom, enhancing the practicality of everyday living. The master bedroom features an en suite shower room, ensuring a private retreat for the homeowners. In addition, there are four further generously sized bedrooms, making this home perfect for larger families or those needing extra space for guests or a home office.

The family bathroom is thoughtfully designed, catering to the needs of the household. Outside, the rear garden offers a tranquil space for outdoor activities and relaxation, while the driveway and garage provide ample parking and storage solutions. The property over looks a nature area where you will often see deer grazing .

This property is a true gem, combining modern living with comfort and convenience. Viewing is highly recommended to fully appreciate all that this delightful home has to offer.

Key Features

- Modern five-bedroom detached house
- Contemporary kitchen and dining area
- Master bedroom with en suite
- Family bathroom with modern fittings
- Driveway and garage for parking
- Spacious lounge for relaxation
- Convenient utility room and cloakroom
- Four additional good-sized bedrooms
- Lovely rear garden for outdoor fun
- Viewing highly recommended!

Rooms and Dimensions

Entrance Hallway

Guest WC

Lounge

11'10" x 17'0" (3.61 x 5.20)

Open Plan Kitchen/Diner

25'7" x 12'5" (7.80 x 3.80)

Utility

5'6" x 10'5" (1.69 x 3.18)

Landing

Bedroom One

12'0" x 11'1" (3.68 x 3.39)

Ensuite

Bedroom Two

11'11" x 8'7" (3.65 x 2.63)

Bedroom Three

11'1" x 8'0" (3.38 x 2.46)

Bedroom Four

9'8" x 8'3" (2.95 x 2.54)

Bedroom Five

7'6" x 9'10" (2.31 x 3.02)

Garage

9'4" x 17'0" (2.87 x 5.20)

Front & Rear Gardens

Driveway

Disclosure

IDENTIFICATION CHECKS - C





Webbs
Helping people move since 1994



Webbs
Helping people move since 1994



Webbs
Helping people move since 1994



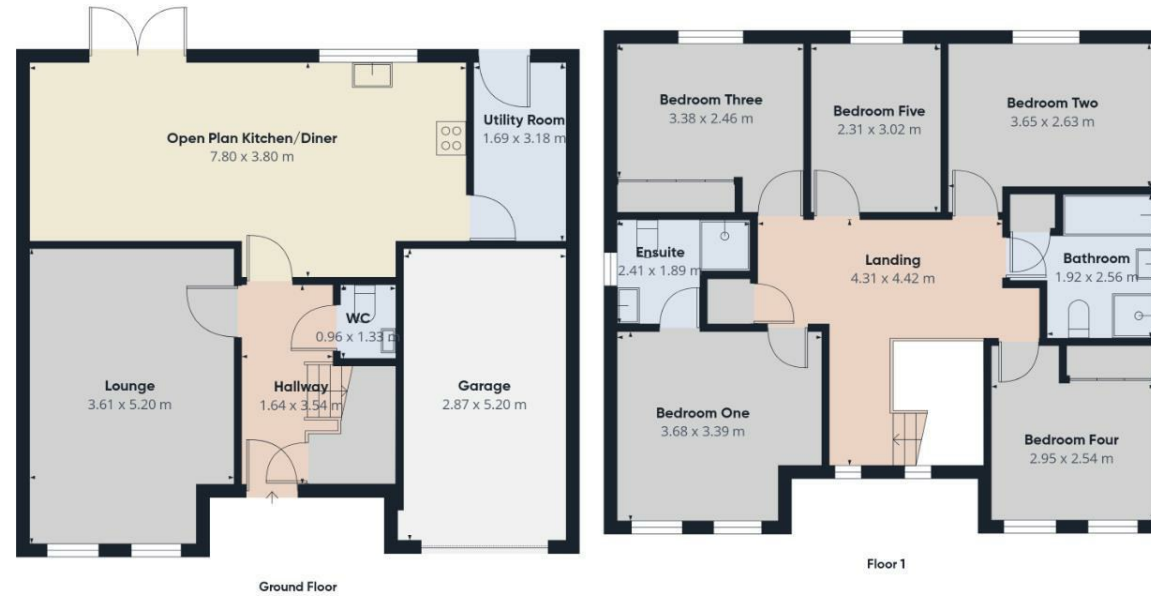
Webbs
Helping people move since 1994



Webbs
Helping people move since 1994



Webbs
Helping people move since 1994



Approximate total area⁽¹⁾
147.1 m²

(1) Excluding balconies and terraces

Calculations reference the RICS IPMS 3C standard. Measurements are approximate and not to scale. This floor plan is intended for illustration only.

GIRAFFE360



Energy Efficiency Rating		Environmental Impact (CO ₂) Rating	
Score	Band	Score	Band
85	B	82	B
80-84	C	77-81	C
75-79	D	72-76	D
70-74	E	67-71	E
65-69	F	62-66	F
60-64	G	57-61	G

England & Wales EU Directive 2002/91/EC

Webbs Estate Agents - endeavour to maintain accurate depictions of properties in Virtual Tours, Floor Plans and descriptions, however, these are intended only as a guide and purchasers must satisfy themselves by personal inspection.