



THE  
TURRET

THE TURRET  
HAMPSTEAD, NW3

# THE TURRET

HAMPSTEAD, NW3

Set behind an iconic castellated façade, this exquisite six-bedroom residence is one of Hampstead's most distinctive homes. Built in the 19th century in the Jacobean Revival style, the house has been meticulously renovated to combine elegant period architecture with refined modern living and thoughtfully curated interior design.

Accessed via a gated archway and approached through a charming south-facing courtyard, the property offers privacy, grandeur, and a warm sense of welcome. Arranged over just three floors, the accommodation is generously proportioned throughout, with an abundance of natural light and many dual-aspect rooms enhancing the feeling of space and openness.

The ground floor features a grand entrance hall leading to a fabulous drawing room, and a versatile dining or family room. A luxurious, Italian, eat-in kitchen with a large island is equipped with premium Miele and Liebherr appliances, and complemented by a separate utility room. Underfloor heating runs throughout the home beneath elegant parquet flooring. A striking Crittall style steel extension opens to the secluded garden.

The upper floors offer six bedrooms and four bathrooms (three en suite), including a luxurious principal suite. Each room showcases a blend of classic detailing and contemporary finishes, creating a sophisticated yet inviting home. Further highlights include an integral garage and walled garden — a private oasis perfect for relaxing or entertaining.

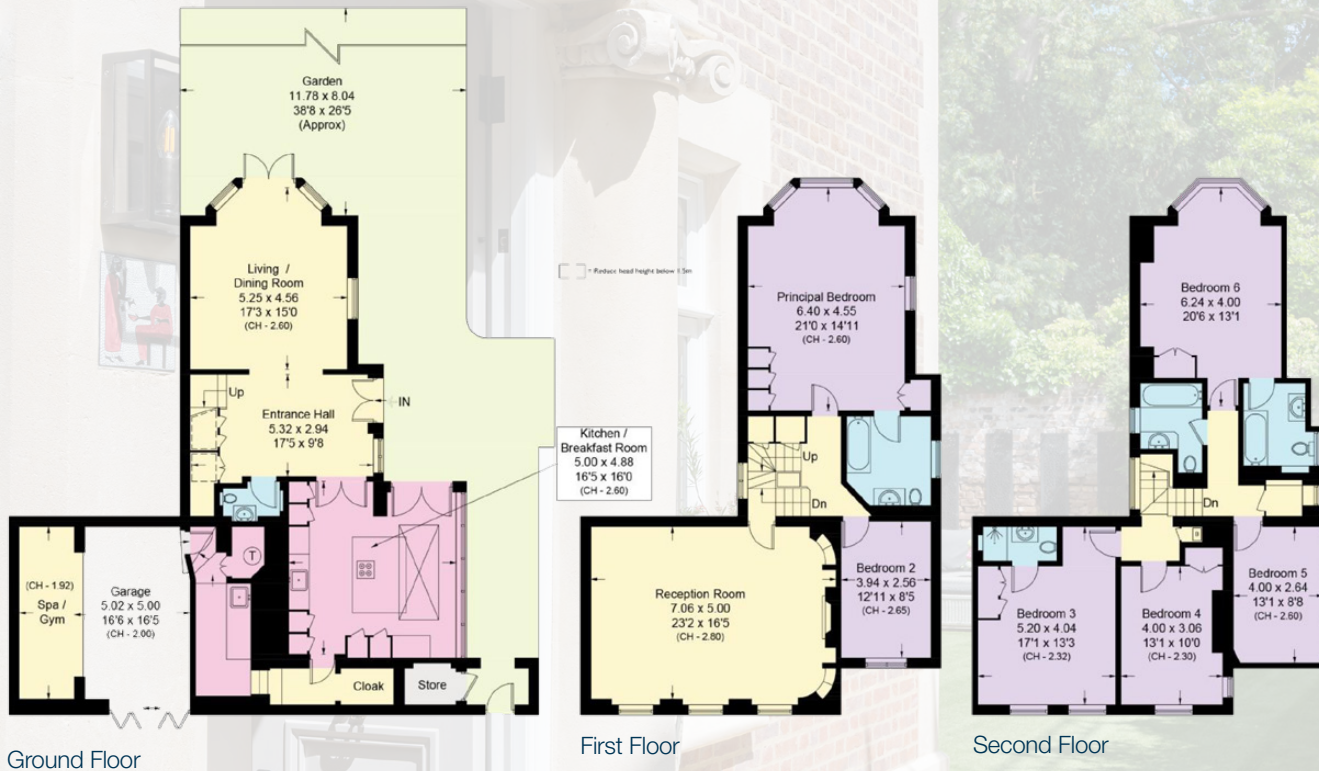
Every detail has been carefully considered, from bespoke furniture and home automation throughout — offering control over lighting, heating, and security — to a refined lighting scheme that enhances every room. The overall aesthetic is one of understated luxury, where elegance is expressed through exceptional craftsmanship, and thoughtfully interior designed.

Ideally situated on the eastern side of Frognal, just south of Frognal Way, the property is approximately 450 metres from Hampstead Underground Station (Northern Line) and around 500 metres from the open green spaces of Hampstead Heath. The boutiques, cafés, restaurants, and cultural attractions of Hampstead Village are all within easy walking distance, along with highly regarded schools and excellent transport links.





APPROXIMATE GROSS INTERNAL AREA  
296.1 SQ\_M (3,186 SQ\_FT) INCLUDING LIMITED USE AREA 31 SQ\_FT AND EXTERNAL STORE 20 SQ\_FT



## ACCOMMODATION & AMENITIES

WELCOMING SECURE COURTYARD • RECEPTION HALL  
FAMILY/GARDEN ROOM • LUXURIOUS KITCHEN/BREAKFAST  
ROOM • UTILITY ROOM • GUEST CLOAKROOM  
DRAWING ROOM • MAIN BEDROOM WITH EN SUITE BATHROOM  
STUDY/BEDROOM • FOUR FURTHER BEDROOMS (1 EN SUITE)  
FAMILY BATHROOM • INTEGRAL GARAGE/GYM  
SECLUDED WALLED GARDENS • RESIDENTS PARKING  
COMPUTER CONTROLLED LIGHTING, HEATING AND  
SOPHISTICATED ALARM SYSTEM

**GUIDE PRICE £6,950,000**

**FREEHOLD**

**MAIN AGENTS**

**MARCUS  
PARFITT**

RESIDENTIAL SALES & ACQUISITIONS

**020 7431 0000**

28 Church Row, Hampstead, London NW3 6UP  
email: [info@marcusparfitt.com](mailto:info@marcusparfitt.com) [www.marcusparfitt.com](http://www.marcusparfitt.com)

