

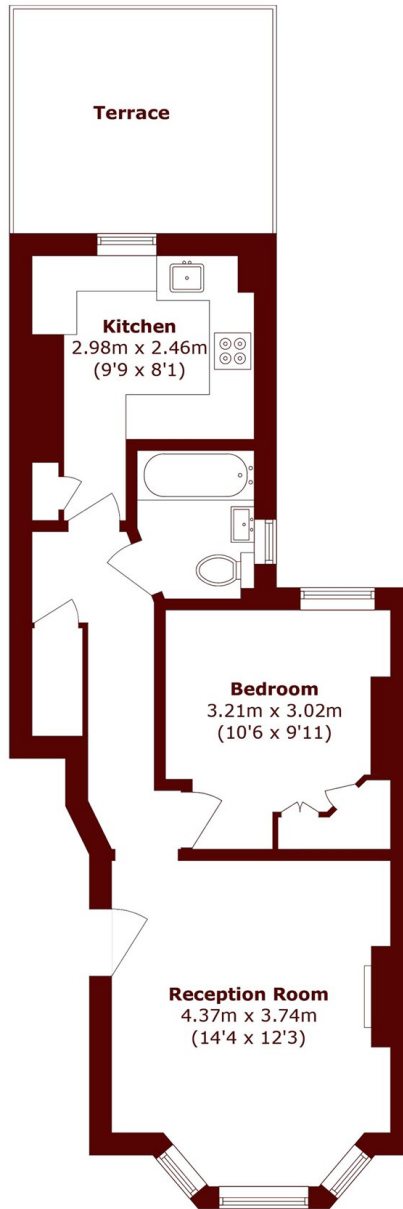


## Irving Road, W14

£495,000



- One Bedroom
- Raised Ground Floor
- Separate Kitchen
- High Ceilings
- No Onwards Chain
- Quiet Location



Total area (approx.): 45.4 sq. m (488.7 sq. ft)  
Terrace area (approx.): 9.1 sq. m (98.0 sq. ft)

## Marsh & Parsons Brook Green

107-109 Shepherds Bush  
Road, London, W6 7LP  
020 7605 7765