



Marylebone Street
Marylebone, W1G

CHESTERTONS



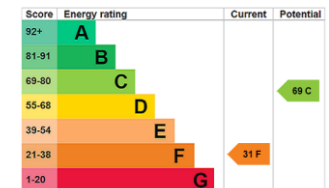


Nestled in the vibrant heart of Marylebone Village, this delightful one-bedroom duplex flat offers a perfect blend of modern comfort and historic charm.

- One bedroom and one bathroom
- 3rd floor with lift access
- Lots of natural light
- Furnished
- Next door to Marylebone Village

£3,900 pcm

Additional tenant charges apply (fees apply to non-AST tenancies only)
 Tenancy Agreement Fee: £300
 References per Tenant/Guarantor: £60
 Inventory check (approx. £100 – £250 inc. VAT)
[chestertons.co.uk/property-to-rent/applicable-fees](https://www.chestertons.co.uk/property-to-rent/applicable-fees)



Minimum Term: 12 months
Deposit Required: Five weeks
Local Authority: Westminster
Council Tax Band: E
EPC Rating: E
Furnished

Chestertons Marylebone Lettings

20a Paddington Street
 London
 W1U 5QP

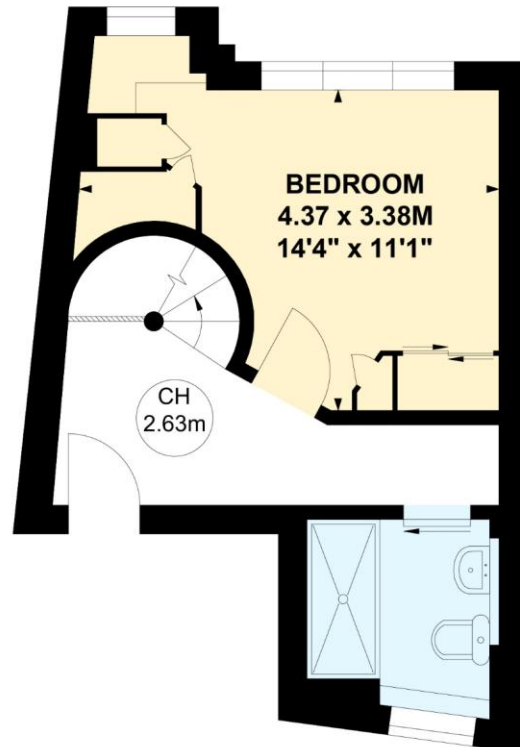
marylebonelettingsusers@chestertons.co.uk

[chestertons.co.uk](https://www.chestertons.co.uk)

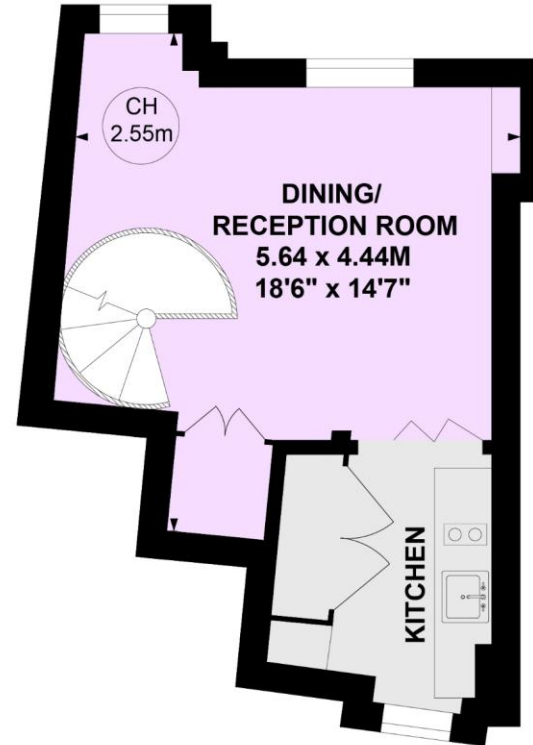
Marylebone Street, W1G

Approximate gross internal area
48.22 sq m / 519 sq ft

Key :
CH - Ceiling Height



Third Floor



Fourth Floor

Not to scale, for guidance only and must not be relied upon as a statement of fact.
All measurements and areas are approximate only

Chesterton UK Services Limited trading as Chestertons for themselves and for the vendor of this property whose agents they are, give notice that (i) these particulars do not constitute any part of an offer or contract, (ii) all statements contained within these particulars are made without responsibility on the part of Chestertons or the vendor, (iii) whilst made in good faith, none of the statements contained within these particulars are to be relied upon as a statement or representation of fact, (iv) any intending purchasers must satisfy themselves by inspection or otherwise as to the correctness of each of the statements contained within these particulars, (v) the vendor does not make or give either Chestertons or any person in their employment any authority to make or give representation or warranty whatsoever in relation to this property. Wide angle lenses may be used. ©Copyright Chestertons | Chesterton Global Ltd | Registered Office 5th Floor, The Lantern, 75 Hampstead Road, London, NW1 2PL Registered Company Number 05334580.



This paper is
100% recyclable