



Rosebery Gardens, W13

£920,000

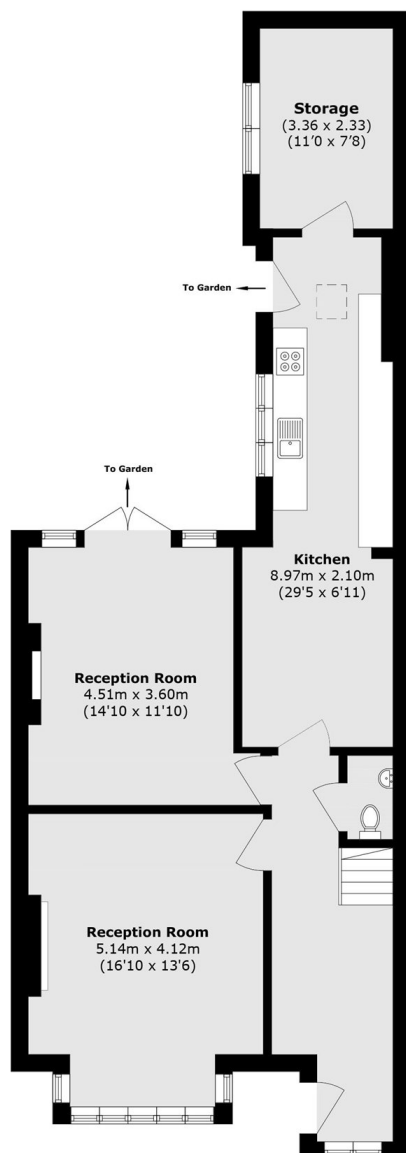
A mid terrace three bedroom family home on a popular residential street. The property has no onward chain and has scope for loft and ground floor extension (STPP) like many neighbouring properties. At already 1500sqft it is a sizeable home ready for a new family.

Located just half a mile from the West Ealing Elizabeth line station, fourteen minutes to Bond Street, thirteen to Heathrow Airport and approximately thirty to Canary Wharf. In addition there are numerous excellent local schools, state and private.

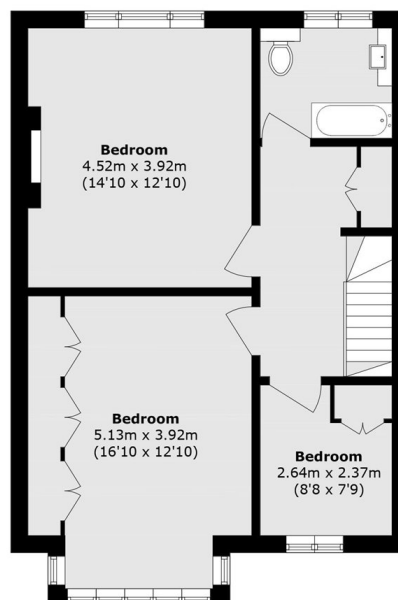
Features

- Three Bedrooms
- Two Reception Rooms
- Separate Kitchen
- No Onward Chain
- Potential To Extend (STPP)
- Close To Station

Rosebery Gardens, London, W13



Ground Floor



First Floor

Total area (approx.): 140.2 sq. m (1509.1 sq. ft)