



103 AKRON DRIVE
WOLVERHAMPTON, WV10 6EQ

OFFERS IN THE REGION OF £350,000
FREEHOLD

Immaculately presented five bedroom detached home located on the popular Akron Gate development close to a range of amenities including shops, pubs, medical facilities and is just a short distance from Wolverhampton City Centre, the M54, and the i54 Business Park. The property features spacious and well appointed accommodation throughout comprising entrance hall, living room, dining kitchen, utility, ground floor w.c, five bedrooms with en-suite to master, family bathroom, enclosed rear garden, integral garage and a driveway to the front.



103 AKRON DRIVE

- FIVE BEDROOM DETACHED

HOME • IMMACULATELY PRESENTED

THROUGHOUT • CLOSE TO M54 & I54 • EXTREMELY

POPULAR AKRON GATE LOCATION • WALKING

DISTANCE TO SUPERMARKET • INTEGRAL

GARAGE • ENCLOSED REAR GARDEN • DRIVEWAY

PROVIDING OFF ROAD PARKING



ENTRANCE HALL

LIVING ROOM

DINING KITCHEN

UTILITY

GROUND FLOOR W.C

FIRST FLOOR LANDING

BEDROOM ONE

ENSUITE

BEDROOM TWO

BEDROOM THREE

BEDROOM FOUR

BEDROOM FIVE

FAMILY BATHROOM

REAR GARDEN

GARAGE

COUNCIL TAX

Wolverhampton City Council - Tax Band D

TENURE Freehold

The property is freehold.

TENURE Freehold

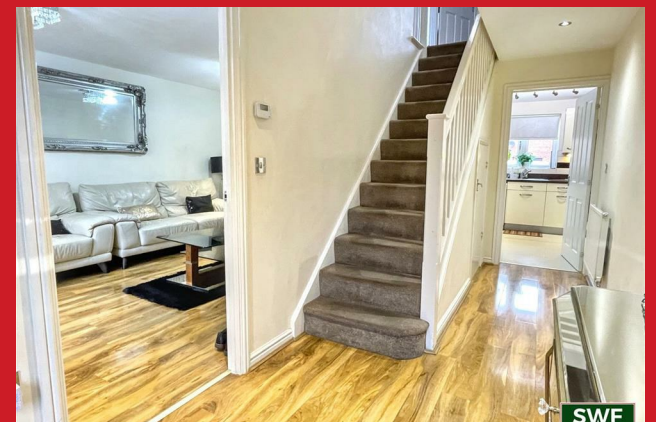
The property is freehold.

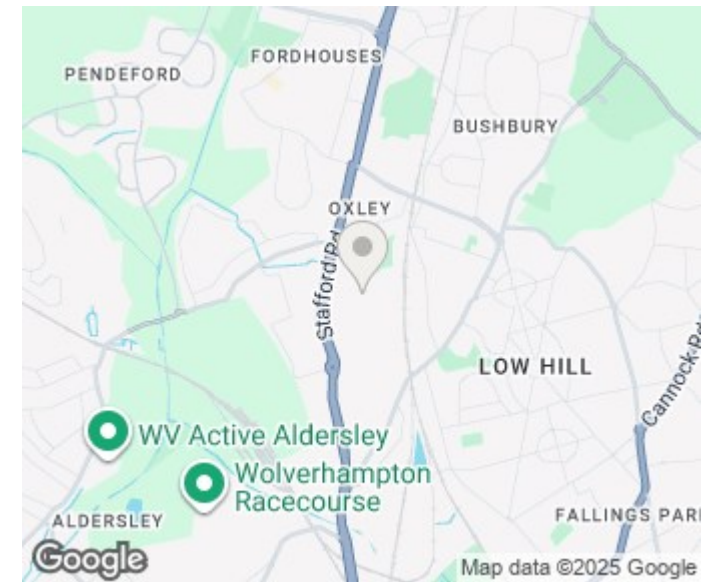
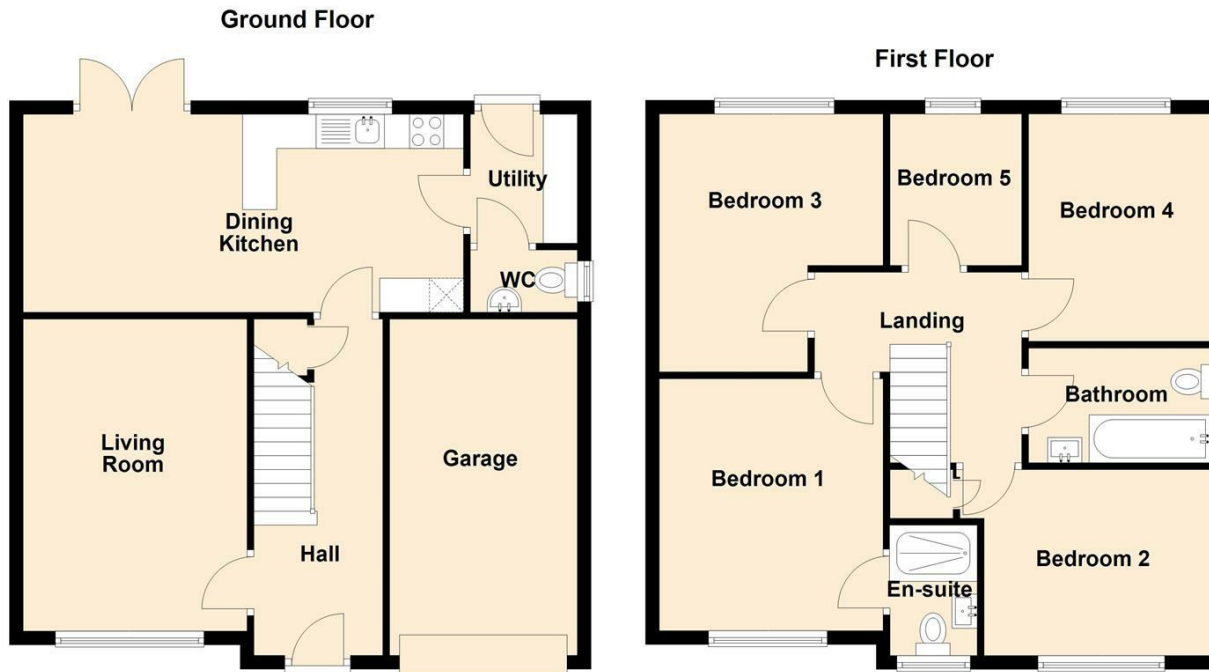
BROADBAND

Ofcom checker shows Standard / Superfast / Ultrafast are available

Ofcom provides an overview of what is available. Potential purchasers should contact their preferred supplier to confirm availability and speed

103 AKRON DRIVE





Energy Efficiency Rating		
	Current	Potential
Very energy efficient - lower running costs		
(92 plus) A		
(81-91) B		
(69-80) C		
(55-68) D		
(39-54) E		
(21-38) F		
(1-20) G		
Not energy efficient - higher running costs		
England & Wales	EU Directive 2002/91/EC	



Sanders, Wright & Freeman - Sales 01902 575555
 13 Waterloo Road enquiries@swfestateagents.co.uk
 Wolverhampton www.swfestateagents.co.uk
 West Midlands
 WV1 4DJ

Agents Note: Whilst every care has been taken to prepare these particulars, they are for guidance purposes only. All measurements are approximate and are for general guidance purposes only and whilst every care has been taken to ensure their accuracy, they should not be relied upon and potential buyers/tenants are advised to recheck the measurements