



WOODLEIGH GARDENS, SW16

£600,000

- Ground floor period maisonette
- Two bedrooms
- Excellent condition
- Large private garden
- Share of freehold
- Energy rating: D





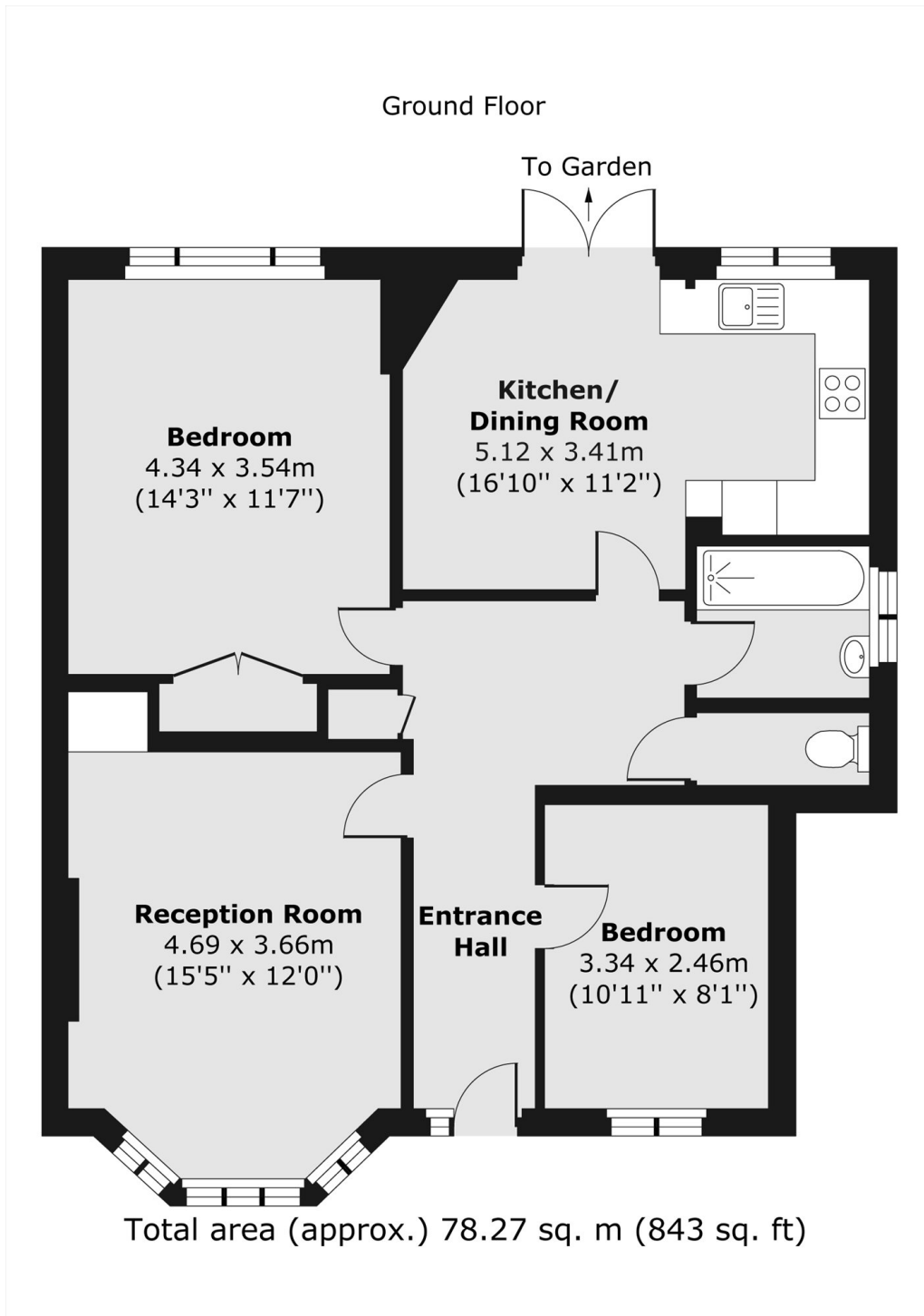
ABOUT THE HOME

A spacious 843 sq ft, two double bedroom ground floor maisonette, featuring a separate lounge and modern kitchen/diner opening onto a large private garden. The property has been renovated to a high standard and is well maintained.

Woodleigh gardens is set in a prime Streatham Hill location, ideally positioned close to excellent transport links, well-regarded schools and a wide range of local amenities. Streatham and Streatham Hill mainline stations are both within easy reach, offering fast connections to London Victoria via Clapham Junction, as well as services to London Bridge, St Pancras International, St Albans and Gatwick via East Croydon. The shops, bars and restaurants of Streatham High Road, along with the open green spaces of Tooting Common, are all nearby.





**JACKSONS STREATHAM**

1-3 De Montfort Parade,
Streatham High Road,
Sales: 020 8487 3179
Lettings: 020 8487 3180

Energy Rating: D We aim to make our particulars both accurate and reliable. However they are not guaranteed; nor do they form part of an offer or contract. If you require clarification on any points then please contact us, especially if you're traveling some distance to view. Please note that appliances and heating systems have not been tested and therefore no warranties can be given as to their good working order.