

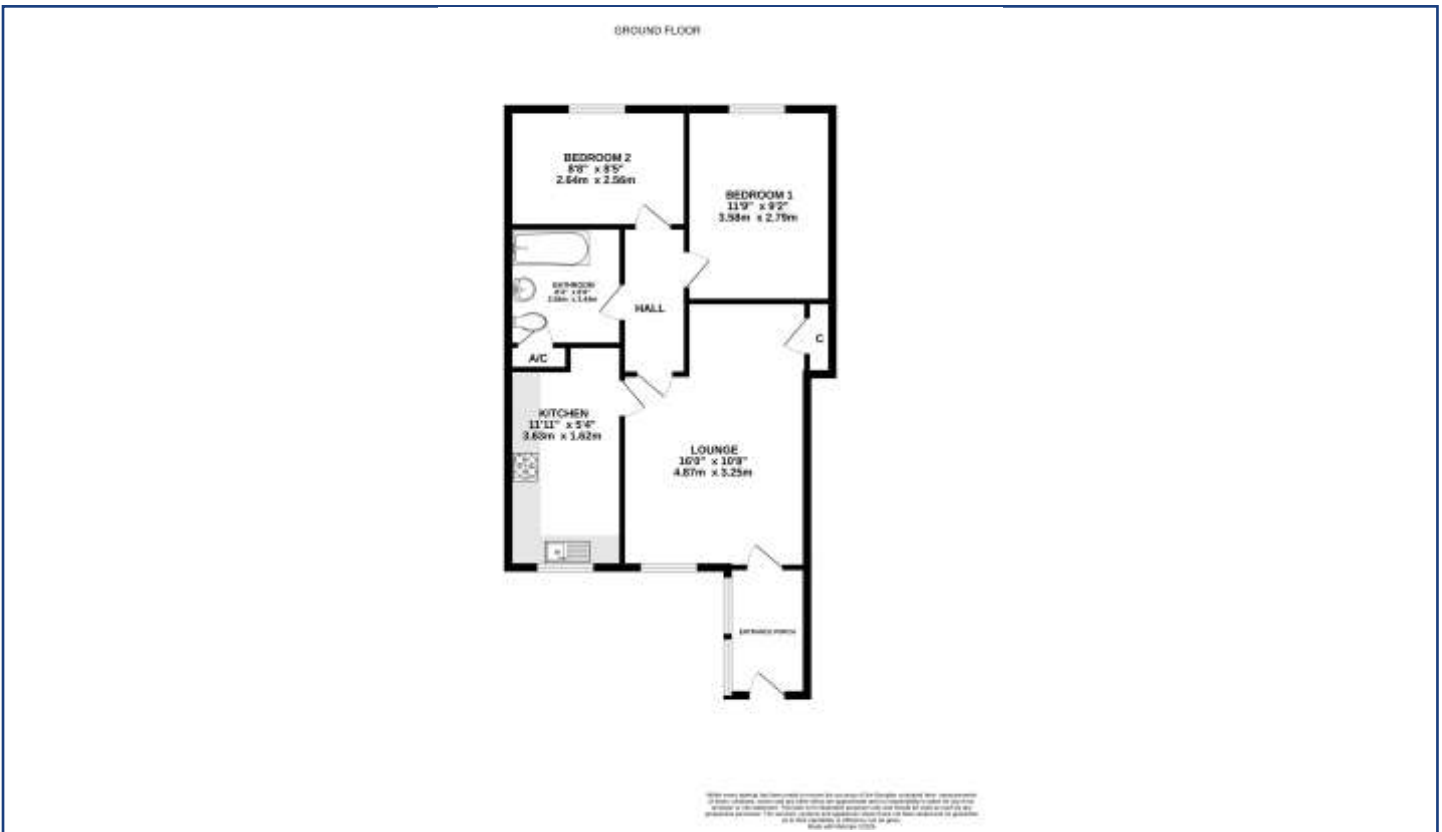


ICONIC
ESTATE AGENTS

Weavers Close, Horsham St Faith
OIEO £150,000 Share of Freehold



- Modern Two Bedroom Ground Floor Apartment
- Entrance Porch
- Two Double Bedrooms
- Contemporary Fitted Kitchen
- Spacious Sitting/Dining Room
- Modern Three Piece Bathroom Suite
- Allocated Parking Space
- Communal Garden
- Beautifully Modernised Throughout
- EPC Rating C / Council Tax Band A



From the A140 Holt Road turn right heading towards Horsham St Faith onto Church Street and follow the road around. Turn right onto Back Street and left onto Spixworth Road. Turn left into Weavers Close where the property can be found indicated by our For Sale Board.

Agents Notes: Include newly fitted double glazing throughout and a new composite entrance door, both scheduled for installation towards the end of May. Lease charges for 2026 are £841.00, which have already been paid through to April 2027.

Viewings strictly by appointment with: 297 Fakenham Road, Norwich, NR8 6LE

Taverham **01603 261104**
Norwich **01603 740044**



We bring to prospective purchasers attention that we, as estate agents for the property, have not tested any appliances and purchasers should make their own enquiries of the relevant Authorities regarding the connection and viability of all services. These particulars, whilst believed to be accurate are set out as a general outline only for guidance and do not constitute any part of an offer or contract. Intending purchasers should not rely on them as statements of representation of fact, but must satisfy themselves by inspection or otherwise as to their accuracy.