



Guide Price
£625,000

Freehold

4x  1x  2x 

**Bower Mount Road,
Maidstone, Kent ME16**

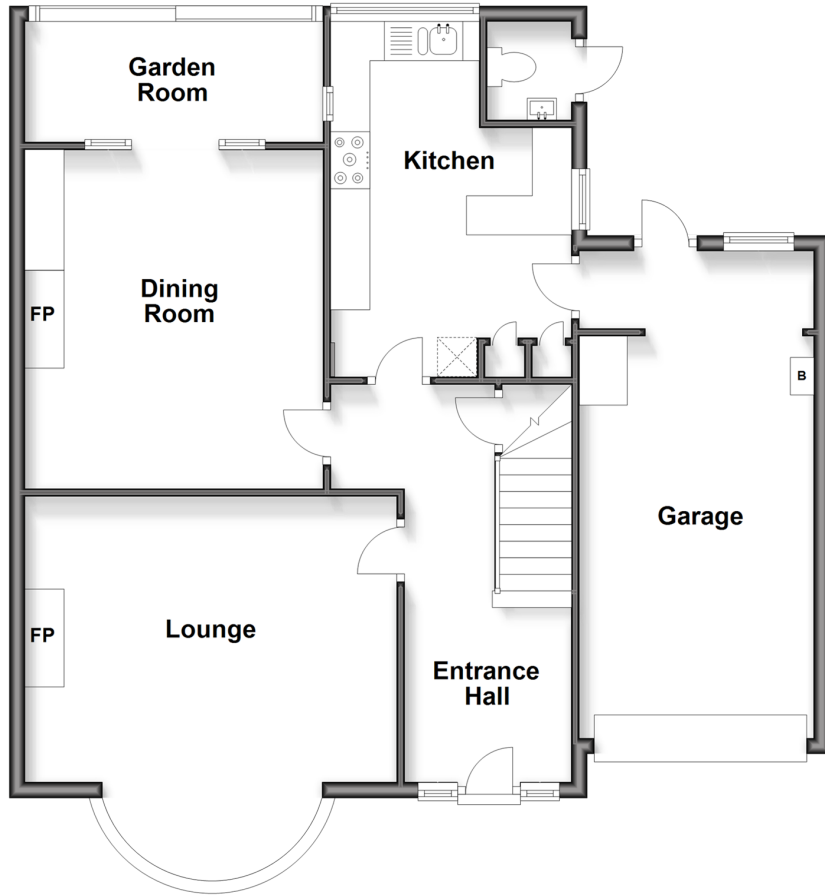
OVER 60?

Secure this property
for up to **59% less!**

Wards
Helping you move forwards

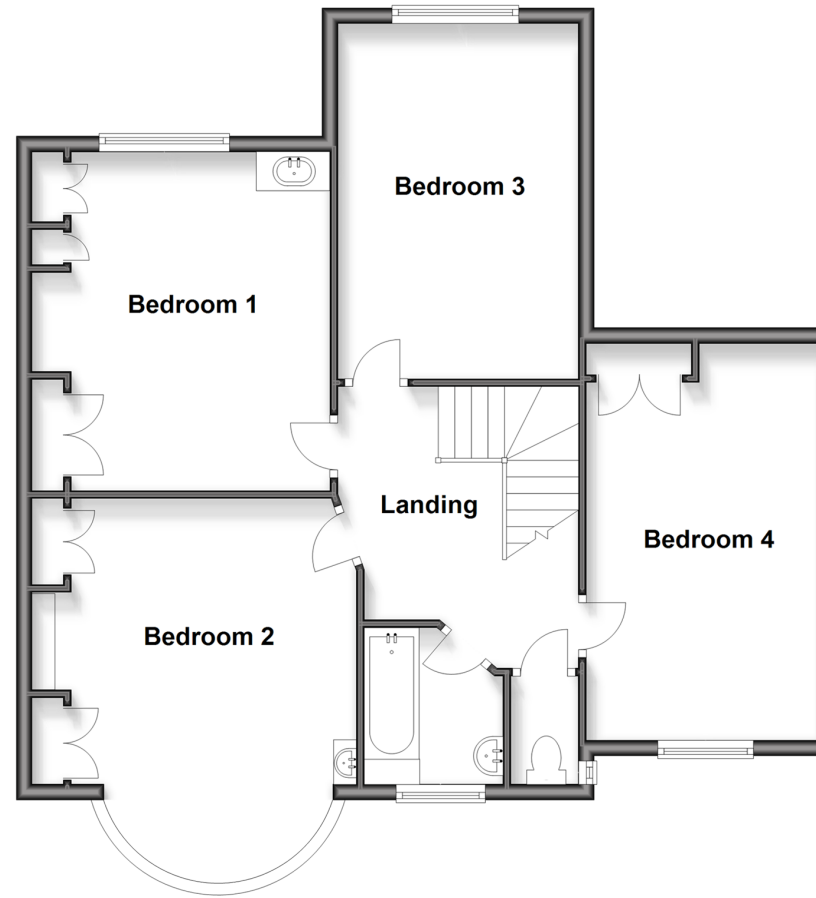
Ground Floor

Approx. 87.7 sq. metres (944.5 sq. feet)



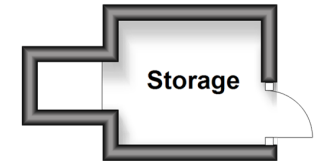
First Floor

Approx. 77.8 sq. metres (837.6 sq. feet)



Outbuilding

Approx. 3.5 sq. metres (38.2 sq. feet)



Accommodation

GROUND FLOOR

Entrance Hall: 16'2 x 12'0 (4.93m x 3.66m)

Lounge: 16'2 x 15'6 (4.93m x 4.73m)

Dining Room : 14'0 x 12'6 (4.27m x 3.81m)

Garden Room: 11'9 x 4'4 (3.58m x 1.32m)

Kitchen: 14'11 x 9'11 (4.55m x 3.02m)

Cloakroom

FIRST FLOOR

Landing

Bedroom 1: 16'2 x 12'3 (4.93m x 3.74m)

Bedroom 2: 14'1 x 11'4 (4.30m x 3.46m)

Bedroom 3: 15'0 x 10'0 (4.58m x 3.05m)

Bedroom 4: 15'0 x 9'1 (4.58m x 2.77m)

Bathroom

Toilet

OUTBUILDING

Storage

OUTSIDE

Rear Garden

Outside Cloakroom

Front Garden

Driveway

Integral Garage



Main features

- Charming 1930's built Clarke & Epps bay fronted house
- Sought after prestigious location
- Stunning gardens to front and rear
- Lounge, dining room and garden room
- Located within one of Maidstones premiere residential roads



Nearest Schools

Primary Schools: Maidstone, St Michael's C of E Junior School 0.3 miles, St Francis' Catholic Primary, Maidstone 0.4 miles, Brunswick House Primary 0.4 miles

Secondary Schools: St Augustine Academy 0.3 miles



Transport Information

Train Stations: Maidstone West 0.4 miles, Maidstone Barracks 0.5 miles, Maidstone East 0.7 miles



Address

Bower Mount Road, Maidstone, Kent ME16



Directions

For directions to this property please contact us.



Wards
Helping you move forwards

Call Maidstone Branch 01622 683737 ■ wardsof Kent.co.uk



- Legal advice should be taken to verify fixtures/fittings, planning, alterations and/or lease details
- Appliances & services are untested, dimensions are approximate and floor plans are not to scale
- Through a Homewise Home For Life Plan people aged 60+ can secure this property for up to 59% less, by purchasing a Lifetime Lease

EPC RATING	CURRENT:	POTENTIAL:

13158448/20260111/CV/DS