



Luscombe Maye

Since 1873

2 Membland Court, Newton Ferrers

£350,000

🛏️ 2 🚿 1 🚗 1



An inviting two-bedroom apartment, situated in a sought-after location, offering comfortable and well-proportioned living spaces. This property is ideal for those seeking a convenient lifestyle with easy access to local amenities.

Upon entering, you are greeted by a welcoming atmosphere. The reception room serves as a bright and airy hub, perfect for relaxation or entertaining with a wood-burning stove and double doors leading out onto a charming terrace. The kitchen is thoughtfully designed with integrated appliances, offering a functional space for everyday living.

The apartment features two comfortable bedrooms, providing tranquil retreats, with level access from bedroom two onto a sheltered patio. A stylish and well-appointed bathroom completes the internal accommodation.

Externally, the property benefits from allocated parking. The communal gardens provide a peaceful setting with plenty of outdoor space to enjoy throughout the seasons.

With 638 sq ft of internal space, this beautifully presented apartment offers a well-designed layout for modern living in a desirable area.

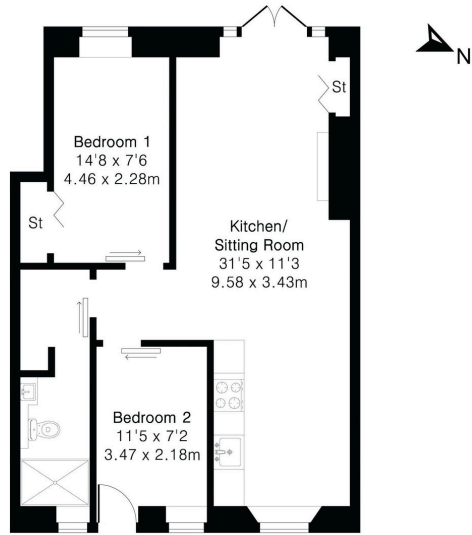
Originally built as the tennis court for the opulent Membland Hall Estate, the complex was converted into eight private residences in the 1950s after the grand manor house was demolished.

Characterised by traditional local materials, picturesque pointed rooflines, and leaded windows, the court is nestled within a designated Area of Outstanding Natural Beauty just over a mile from the picturesque villages of Newton Ferrers and Noss Mayo.

VERIFIED MATERIAL INFORMATION To ensure legal compliance, we require our sellers to complete a Property Information Questionnaire or provide a Material Information Guide along with the title document. If available, please scan the QR code or access the additional online material information (<https://moverly.com/sale/SZKytMSPxGGCSZg3oxjQMMy/view>).



Approximate Gross Internal Area 650 sq ft - 60 sq m

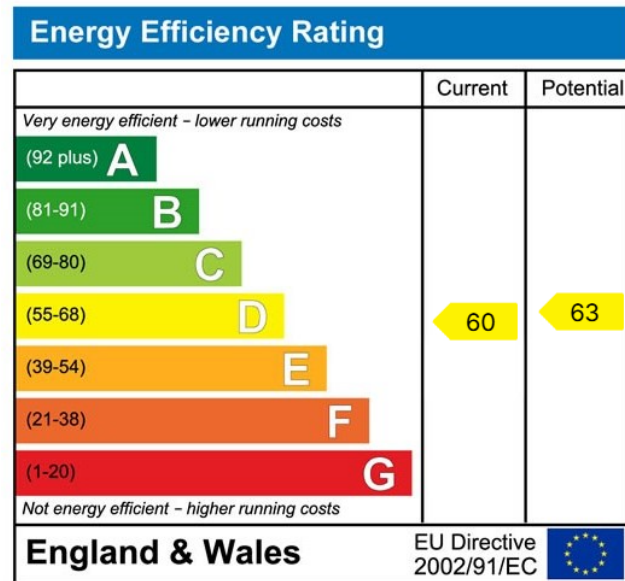


- Charming 2 bedroom apartment within historic conversion
- Front and rear terrace
- Underfloor heating
- Peaceful and secluded location
- Low maintenance
- Allocated parking
- Immaculately presented
- Expansive communal gardens and woodlands
- Close to amenities

 **Luscombe Maye**
Since 1873



Use the QR code for further "Material Information" about this home



 **Luscombe Maye**
Since 1873

Newton Ferrers:
Newton Hill, Newton Ferrers PL8 1AA
01752 872417
newtonferrers@luscombemaye.com
www.luscombemaye.com