



Connells

The Garlands
Wednesfield Wolverhampton

The Garlands Wednesfield Wolverhampton WV11 1JU

for sale offers in the region of
£540,000



Property Description

Connells Wolverhampton offer for sale this six-bedroom spacious modern detached home in Wednesfield, and provides generous, flexible accommodation arranged for family living and entertaining.

Presented in immaculate condition throughout, the property combines multiple reception spaces with an open-plan layout to the rear and ample low-maintenance garden.

On the ground floor, there are two reception rooms, allowing for separate living and dining or a dedicated family room and formal lounge. To the rear, an open-plan style kitchen/sitting area forms the main hub of the home, providing ample space for cooking, dining and relaxation in one sociable environment.

Upstairs the property offers six bedrooms, arranged over the upper floors to suit a range of family needs, from children's rooms to guest accommodation and home-working spaces. There are three bathrooms in total, including a Jack & Jill en-suite.

Room Dimensions

Entrance Hall

Lounge

4.572m x 3.4544m - 15'0" x 11'4"

Dining Room

4.8514m x 3.5814m - 15'11" x 11'9"

Open Plan Style Kitchen/Sitting Area

7.8486m x 6.1722m - 25'9" x 20'3"

Utility Room/WC

4.064m x 1.651m - 13'4" x 5'5"

Landing

Bedroom One

4.191m x 3.6068m - 13'9" x 11'10"

En-Suite

2.8194m x 0.8636m - 9'3" x 2'10"

Bedroom Two

3.2258m x 3.1242m - 10'7" x 10'3"

Bedroom Three

3.175m x 2.794m - 10'5" x 9'2"

Jack & Jill En-Suite

2.2098m x 0.9144m - 7'3" x 3'0"

Bedroom Four

3.4798m x 3.2766m - 11'5" x 10'9"

Bedroom Five

2.6416m x 2.5908m - 8'8" x 8'6"

Bedroom Six

2.6416m x 2.5654m - 8'8" x 8'5"

Bathroom

2.413m x 1.7272m - 7'11" x 5'8"

Detached Garden Room

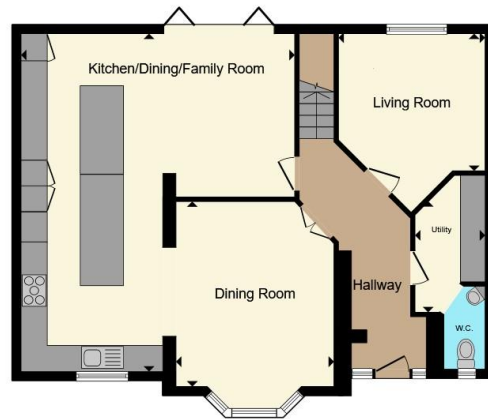
5.2324m x 4.9276m - 17'2" x 16'2"

Rear Garden





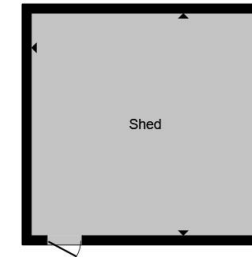




Ground Floor



First Floor



Outbuilding

Total floor area 190.8 m² (2,054 sq.ft.) approx

This floor plan is for illustrative purposes only. It is not drawn to scale. Any measurements, floor areas (including any total floor area), openings and orientation are approximate. No details are guaranteed, they cannot be relied upon for any purpose and they do not form part of any agreement. No liability is taken for any error, omission or misstatement. A party must rely upon its own inspection(s). Powered by www.propertybox.io



To view this property please contact Connells on

T 01902 710 170
E wolverhampton@connells.co.uk

81-83 Darlington Street
 WOLVERHAMPTON WV1 4EX

EPC Rating: Council Tax
 Awaited Band: D

Tenure: Freehold

view this property online connells.co.uk/Property/WVH335584



1. MONEY LAUNDERING REGULATIONS Intending purchasers will be asked to produce identification documentation at a later stage and we would ask for your co-operation in order that there will be no delay in agreeing the sale. 2. These particulars do not constitute part or all of an offer or contract. 3. The measurements indicated are supplied for guidance only and as such must be considered incorrect. Potential buyers are advised to recheck measurements before committing to any expense. 4. We have not tested any apparatus, equipment, fixtures, fittings or services and it is in the buyers interest to check the working condition of any appliances.

Connells Residential is registered in England and Wales under company number 1489613, Registered Office is Cumbria House, 16-20 Hockliffe Street, Leighton Buzzard, Bedfordshire, LU7 1GN. VAT Registration Number is 500 2481 05.

See all our properties at www.connells.co.uk | www.rightmove.co.uk | www.zoopla.co.uk

Property Ref: WVH335584 - 0003