





Property Description

A beautifully extended and fully refurbished three-bedroom semi-detached family home, finished to an exceptional standard and ideally located on High Street, Ryton-on-Dunsmore.

This impressive property offers modern, spacious living throughout, beginning with a welcoming entrance hall leading to a bright and generous living room. Bi-fold doors connect the living room to the stunning open-plan kitchen/dining room, creating a seamless flow ideal for family life and entertaining. The kitchen features contemporary fittings, ample workspace, and further bi-fold doors opening directly onto the rear garden. A ground-floor cloakroom completes the downstairs accommodation.

Upstairs, the home offers three well-proportioned double bedrooms, with the main bedroom benefitting from excellent built-in wardrobe space. The stylish family bathroom is fitted with a fully tiled four-piece white suite, finished to a high standard.

Outside, the property boasts a large private south-west facing rear garden, featuring a spacious porcelain patio area and a two-tier landscaped lawn, all privately enclosed to provide a peaceful outdoor retreat. To the front, the home offers driveway parking and a garage.

Situated close to local schools, shops, and village amenities, this superb home combines high-quality modern living with a convenient and desirable location.

Entrance Hall

Living Room

Very spacious living area with bi-fold doors leading to open plan kitchen with laminate Parque flooring, overlooking front aspect of property

Kitchen/ Dining Room

Large open-plan kitchen dining room with underfloor heating throughout including utility room and porch, perfect for family time as well as hosting and entertaining guests. With fitted appliances including 2 Neff ovens and a Neff5 burner gas hob in addition to a useful utility area with brand new Worcester Bosch boiler all finished to a very high standard throughout. Includes bi-fold doors opening out to landscape rear garden.

Cloakroom

Downstairs cloakroom with wc and wash basin

Main Bedroom

Spacious main bedroom with built in wardrobe space, overlooking front aspect of property

Bedroom 2

Double bedroom overlooking rear aspect of property

Bedroom 3

Good sized bedroom overlooking front aspect of property, ideal as a children's bedroom and/or office/ study space

Bathroom

Large 4 piece white suite bathroom with separate shower cubicle, bath, wc and wash basin with heated towel rail.

Rear Garden

Privately enclose south facing rear garden with porcelain tiled patio, two tier landscaped lawn and private gated side access to front

Garage

Single garage adjoining the property, perfect for household storage or vehicles

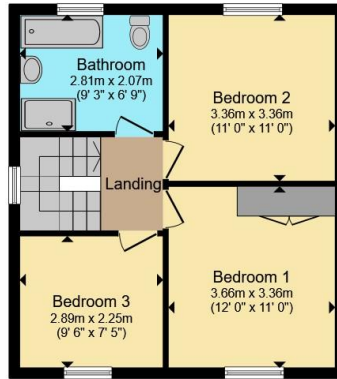
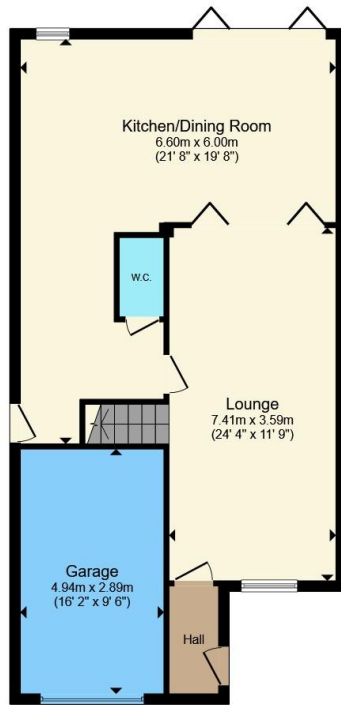
Driveway

Large driveway parking for several cars with small front lawn area ideal for creating additional parking space

Utility Room

Dedicated utility room with downstairs wc.





Ground Floor

First Floor

Total floor area 123.6 m² (1,331 sq.ft.) approx

This floor plan is for illustrative purposes only. It is not drawn to scale. Any measurements, floor areas (including any total floor area), openings and orientation are approximate. No details are guaranteed, they cannot be relied upon for any purpose and they do not form part of any agreement. No liability is taken for any error, omission or misstatement. A party must rely upon its own inspection(s). Powered by www.propertybox.io



To view this property please contact Atkinson Stilgoe on

T 01926 857 461

E kenilworth@atkinsonstilgoe.co.uk

29 Warwick Road
KENILWORTH CV8 1HN

EPC Rating: C Council Tax
Band: D

view this property online atkinsonstilgoe.co.uk/Property/KEN305470

Tenure: Freehold



1. MONEY LAUNDERING REGULATIONS Intending purchasers will be asked to produce identification documentation at a later stage and we would ask for your co-operation in order that there will be no delay in agreeing the sale. 2. These particulars do not constitute part or all of an offer or contract. 3. The measurements indicated are supplied for guidance only and as such must be considered incorrect. Potential buyers are advised to recheck measurements before committing to any expense. 4. We have not tested any apparatus, equipment, fixtures, fittings or services and it is in the buyers interest to check the working condition of any appliances.

Atkinson Stilgoe is a trading name of Connells Residential which is registered in England and Wales under company number 1489613, Registered Office is Cumbria House, 16-20 Hockliffe Street, Leighton Buzzard, Bedfordshire, LU7 1GN. VAT Registration Number is 500 2481 05.

See all our properties at www.atkinsonstilgoe.co.uk | www.rightmove.co.uk | www.zoopla.co.uk

Property Ref: KEN305470 - 0004