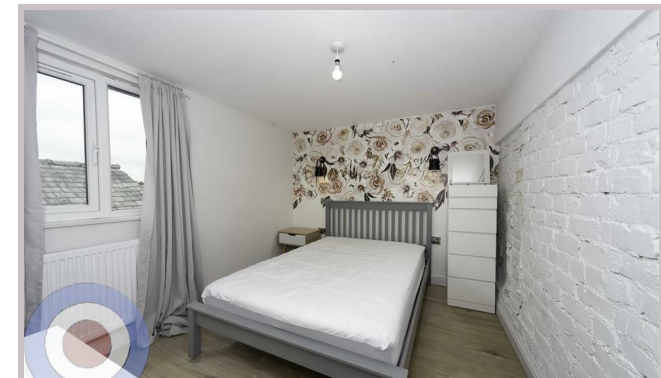




65 Ruskin Avenue  
Manchester  
M14 4DG



# 65 Ruskin Avenue

## £598 Per month

STUDENT PROPERTY AVAILABLE ON 01/07/26

£138pppw  
£153pppw with bills included

This stylish 6-bedroom, 3-storey house is perfectly located in Whitworth Park, just a short walk from the university. Packed with original features and individually styled bedrooms, all six bedrooms are generous doubles, ideal for student living.

The open-plan kitchen-diner provides a social hub, plus you have a separate living room with exposed brickwork and feature wallpaper.

No deposit required and communal cleaning included throughout your tenancy.

- NO DEPOSIT
- ALL BILLS INCLUDED
- COMMUNAL CLEANING INCLUDED
- ALL DOUBLE BEDROOMS
- ENERGY EFFICIENT HOUSE C OR ABOVE
- LOCATED IN WHITWORTH PARK

Local Authority  
Manchester

Council Tax Band Exempt

EPC Rating C

Contact

01613992619

hello@welcometomanchesterlettings.com

www.welcometomanchesterlettings.com

