



Guide Price
£465,000

Freehold

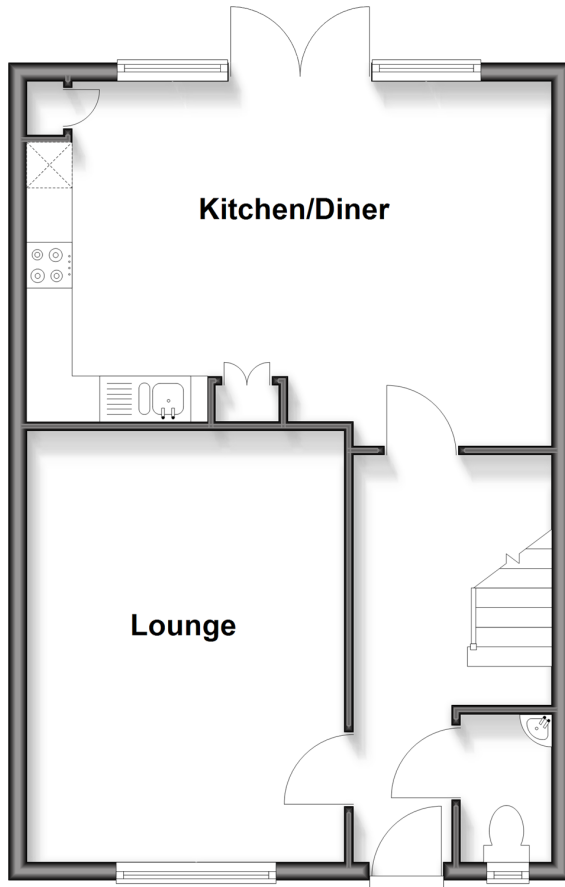
3x  2x  2x 

**Fennel Drive,
Chichester, West
Sussex, PO20**

cubitt & west
Helping you move forwards

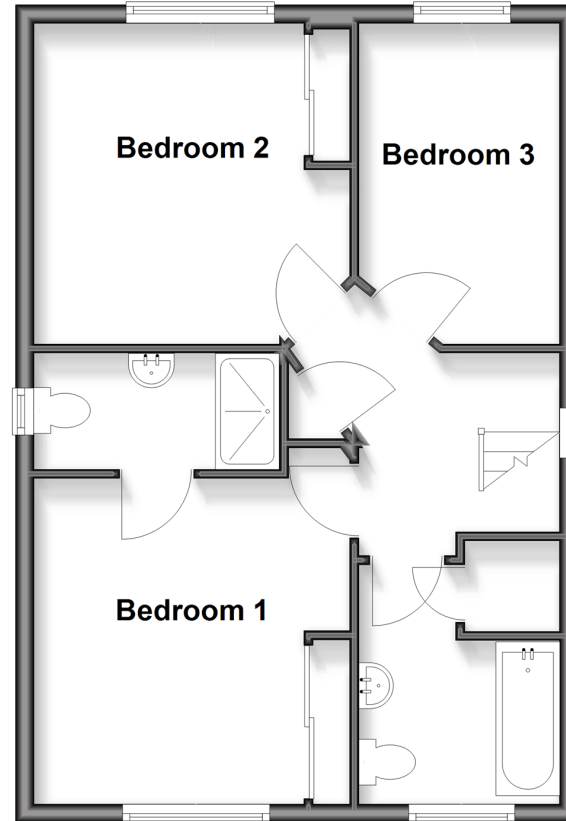
Ground Floor

Approx. 49.2 sq. metres (529.3 sq. feet)



First Floor

Approx. 49.2 sq. metres (529.3 sq. feet)



Accommodation

GROUND FLOOR

Hall

Cloakroom

Lounge: 15'5 x 11'7 (4.70m x 3.53m)

Kitchen/Diner: 18'11 x 12'3 (5.77m x 3.74m)

FIRST FLOOR

Landing

Bedroom 1: 11'11 x 11'8 (3.63m x 3.56m)

En-Suite Shower Room

Bedroom 2: 11'5 x 11'5 (3.48m x 3.48m)

Bedroom 3: 11'9 x 7'2 (3.58m x 2.19m)

Bathroom

OUTSIDE

Front Garden

Rear Garden

Off Road Parking

Detached Garage

Garden/Office Room



Main features

- Bedroom 1 with en-suite and built-in wardrobes
- Detached garage with power, lighting and the recent installation of a level screed floor compound
- Private driveway for multiple vehicles and EV charging point
- Stunning open-plan kitchen/diner with ample cupboard space, island (with power) and French doors to garden

Nearest Schools

Primary Schools: Portfield Community Primary 0.6 miles, Kingsham Primary 1.0 miles, St Richard's Catholic Primary 1.1 miles

Secondary Schools: Arabesque School of Performing Arts

Transport Information

Train Stations: Chichester 1.3 miles, Fishbourne 2.8 miles, Bosham 4.3 miles

Address

Fennel Drive, Chichester, West Sussex, PO20

Directions

For directions to this property please contact us.



cubitt&west
Helping you move forwards

Call Chichester Branch 01243 786581 ■ cubittandwest.co.uk



40415663/20260330/RW/SP