



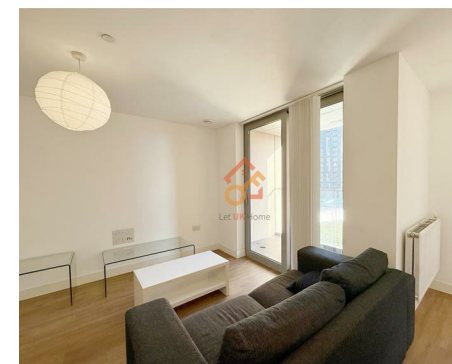
Let **UK** Home

1 Bedrooms

Flat - Studio

Located in London

£305,000



info@letukhome.co.uk

<https://www.letukhome.co.uk/>

01795 358 886



2 Cornmill Lane London

SE13 7GG



Let UK Home are excited to offer this spectacular studio apartment in the heart of Sienna Alto part of the Renaissance.

The flat comprises a spacious open kitchen with a stylishly attached dining area, a magnificent living room, one bright bedroom and one modern bathroom. A virtual viewing is provided.

The apartment facilities include gym, swimming pool, roof terrace and leisure center.

From the apartment, you can walk to Goldsmiths College, take the DLR to Greenwich University, and drive or take the train to Camberwell College of Arts and King's College London (Camberwell Campus).

The apartment is not far from Lewisham's main commercial street, where there are a variety of pubs and restaurants. It is within walking distance of Tesco, a large supermarket open 24 hours a day. It is also close to Blackheath Common and Greenwich Park

2 Cornmill Lane London

£305,000 Leasehold



- Concierge Service
- The Gym
- Residents Lounge
- 4th Floor
- EPC Rating: B

- 24h Security
- Swimming Pool
- Rooftop Terrace
- Virtual Viewing Available





Let **UK** Home

3F 2 Eastbourne Terrace
Paddington
London
W2 6LG

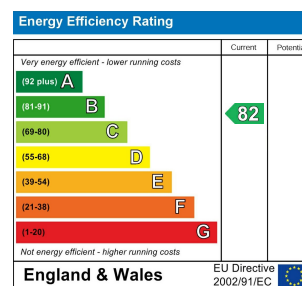
01795 358 886

info@letukhome.co.uk

Council Tax Band: B

Local Authority:

Agents Note: Whilst every care has been taken to prepare these particulars, they are for guidance purposes only. All measurements are approximate and are for general guidance purposes only and whilst every care has been taken to ensure their accuracy, they should not be relied upon and potential buyers/tenants are advised to recheck the measurements.



<https://www.letukhome.co.uk/>