

[martin-thornton.com](http://martin-thornton.com)  
01484 508000



## Holywell Hall, Hollywell Green Halifax,

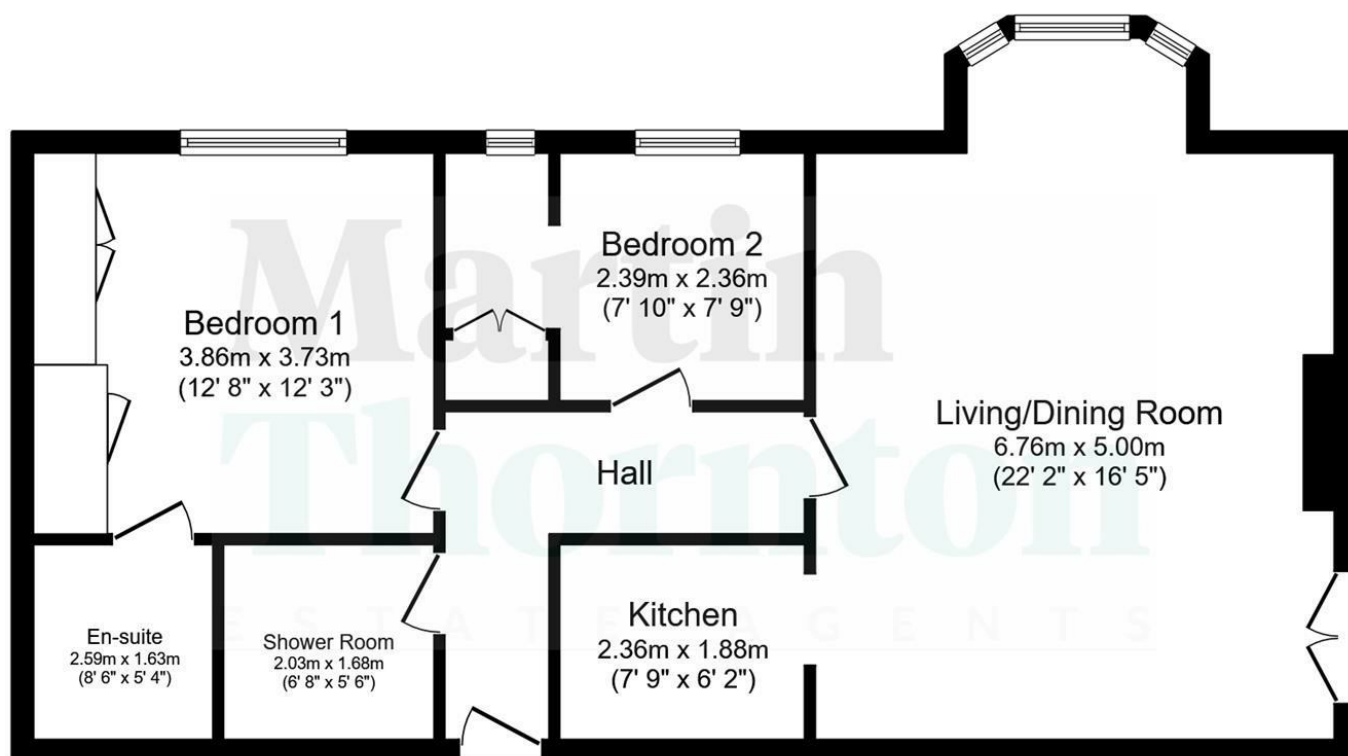
**Offers over £250,000**

Coverdale is a most elegant two-bedroom ground floor apartment, one of only ten within the converted Grade II Listed Holywell Hall. The interior is light and bright with large windows and high ceilings, blending character and contemporary style seamlessly. The superb lounge diner and opulent en suite are stand out rooms, and the communal hallway is simply stunning. The property enjoys a gas-fired central heating system, single-glazing and a telephone entry system. The property enjoys a central village position, ideal for local amenities and nearby M62 motorway access, yet retains a semi-rural feel, making it ideal for a variety of different age groups. There are beautiful communal gardens and allocated parking. An internal viewing is an absolute must to appreciate the position, presentation and accommodation on offer. Externally, there are communal gardens and allocated parking.

# Holywell Hall, Hollywell Green

Halifax,

Floorplan



## Floor Plan

Floor area 73.0 sq.m. (786 sq.ft.)

Total floor area: 73.0 sq.m. (786 sq.ft.)

This floor plan is for illustrative purposes only. It is not drawn to scale. Any measurements, floor areas (including any total floor area), openings and orientations are approximate. No details are guaranteed, they cannot be relied upon for any purpose and do not form any part of any agreement. No liability is taken for any error, omission or misstatement. A party must rely upon its own inspection(s). Powered by [www.Propertybox.io](http://www.Propertybox.io)

# Holywell Hall, Hollywell Green

## Halifax,

### Details

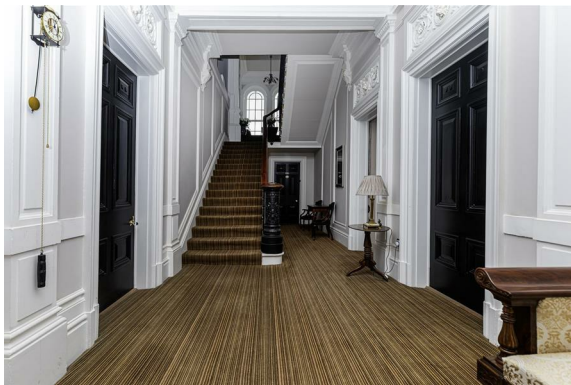


#### Entrance

Metal gates set within stone gateposts give access to the sweeping driveway with adjoining mature communal gardens, which leads to the front of Holywell Hall.

#### Communal Entrance Hallway

An entry phone system grants access to the initial section of the hallway, which has a beautiful mosaic style tiled floor. From here, a superb timber and glazed door with matching panels to either side opens into the main hallway. The stunning hallway has a central staircase, feature newel post, high ceiling and decorative frieze above doors, as well as ornate coving to the ceiling. Coverdale is on the ground floor and the apartment door gives access into its own entrance hallway.



#### Apartment Entrance Hallway

The L-shaped entrance hallway has an entry phone system, a radiator and the high ceiling incorporates downlighting. There is also access to the loft, providing further storage space. From the hallway, a door leads into the lounge diner.



# Holywell Hall, Hollywell Green

## Halifax,

### Details



#### Lounge Diner

This spacious open-plan room certainly has the wow factor and is light and bright, with neutral decor, a high ceiling and a large bay window incorporating padded seating and maximising natural lighting. Glazed doors with a window above provide extra natural light. The high ceiling incorporates ornate coving and, to the chimney breast, there is a glazed door electric stove. The room has open shelving and a low-level storage cupboard. The spacious nature of the room means that it can accommodate a vast amount of furniture, making it an ideal room for entertaining. There are two radiators.



#### Kitchen

The kitchen has wall cupboards and base units with under unit lighting and a sink unit with a mixer tap. Integrated appliances include a fridge, freezer, dishwasher and electric hob with oven beneath and a pull-out filter hood above.



# Holywell Hall, Hollywell Green

## Halifax,

### Details



#### Bedroom One

This large double master bedroom has a light and bright interior. It has a built-in triple wardrobe and a larger walk-in wardrobe with a hanging rail, which also incorporates the boiler for the central heating system and plumbing for an automatic washing machine. There is a stylish upright radiator. This room has the advantage of an en suite bathroom.



#### En Suite Bathroom

The opulent en suite bathroom is one of the standout rooms within the apartment, the centrepiece of which is a freestanding double ended copper and nickel effect bath with an overhead circular rail and shower curtain, a waterfall style shower fitting and an additional hand-held shower attachment. There is a vanity hand basin with storage cupboards beneath and a low-level WC. The room has a dressing table with a mirror and downlighting. The walls are panelled and the lighting is sensor operated.



# Holywell Hall, Hollywell Green

## Halifax,

### Details



#### Bedroom Two

This light and bright bedroom has a large window with timber shutters and decorative coving. There is an adjoining, multipurpose dressing room/study area with a built-in double wardrobe, storage cupboards above and a sash window. There is an upright radiator.



#### Shower Room

This room has sensor operated lighting and a larger than average shower cubicle with a waterfall style shower fitting and a hand-held shower attachment. It has a rectangular hand basin, a low-level WC, an extractor fan and a towel radiator.



#### Tenure

The vendor informs us that the property is leasehold and we are told that all residents in the building are shareholders in the management company and the company owns the freehold.

# Holywell Hall, Hollywell Green Halifax, Directions

