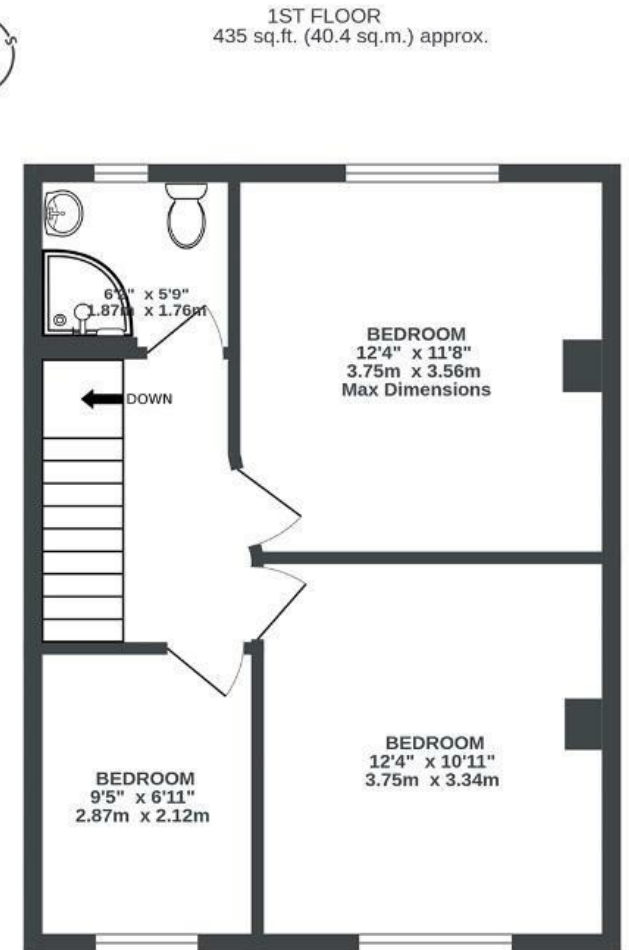
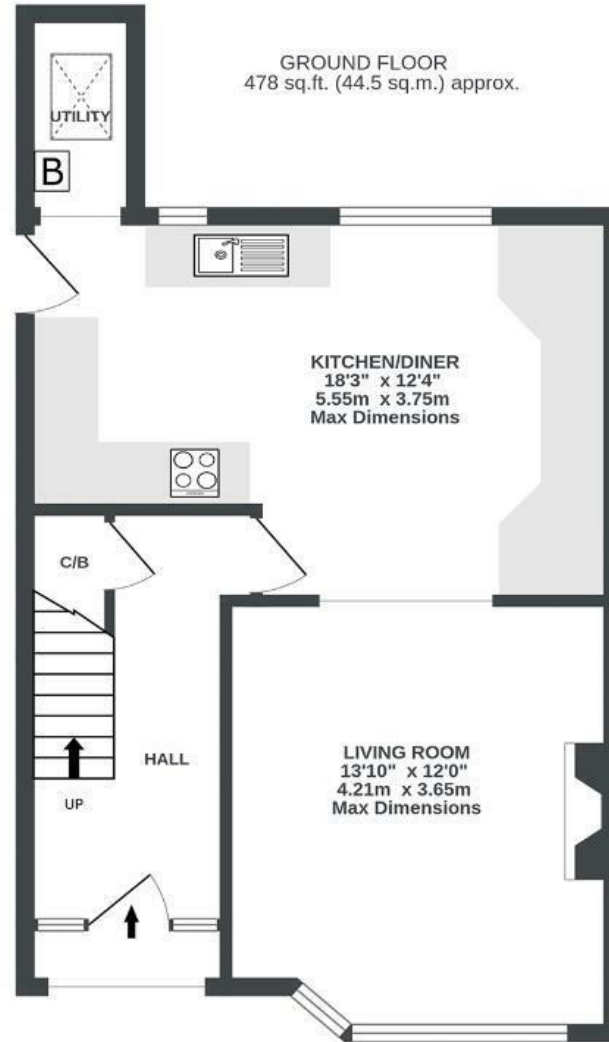


# Eastlyn Road

BEDMINSTER DOWN

APPROXIMATE FLOOR AREA  
84.8 SQM / 913 SQFT



Illustrations are for reference purposes only, measurements are approximate, not to scale.

Boardwalk

# Eastlyn Road , BRISTOL



£390,000



3 Bedrooms



BS13 7HY



1 Bathrooms

*"We love having our breakfast at the kitchen window, admiring the cherry and magnolia trees as sunlight streams in. In winter, we cosy up by the woodburning stove. Our summers are spent in our local park, Manor Woods Valley, and we regularly take the 20-minute walk down to North Street for a coffee or cocktail. We especially love soaking up the sun in our gardens, where we've created a private haven for us, and for wildlife - including the bees and birds that have made our garden their home."*

