



**Haldon Road, SW18**

**£875,000**

**Dexters**



## Haldon Road, SW18

A beautifully presented two double bedroom garden flat offering 822 sq ft of well-balanced living space, perfectly positioned on a quiet residential road in the heart of East Putney.

The property has been extensively renovated features a generous kitchen/reception room with a contemporary fitted kitchen and ample space for dining and entertaining, opening directly onto a private rear garden. The garden is thoughtfully landscaped ideal for summer gatherings and outdoor dining.

The property comprises two well-proportioned double bedrooms, each with Ensuite bathrooms. There is also a separate WC.

Haldon Road is a sought-after location, perfectly positioned for the green open spaces of Wandsworth Common, as well as the vibrant shops, cafés and restaurants of Old York Road and Southside Shopping Centre. Excellent transport links are nearby, with Wandsworth Town station offering direct services into Waterloo, and East Putney Underground (District Line) providing easy access across London.

### Features

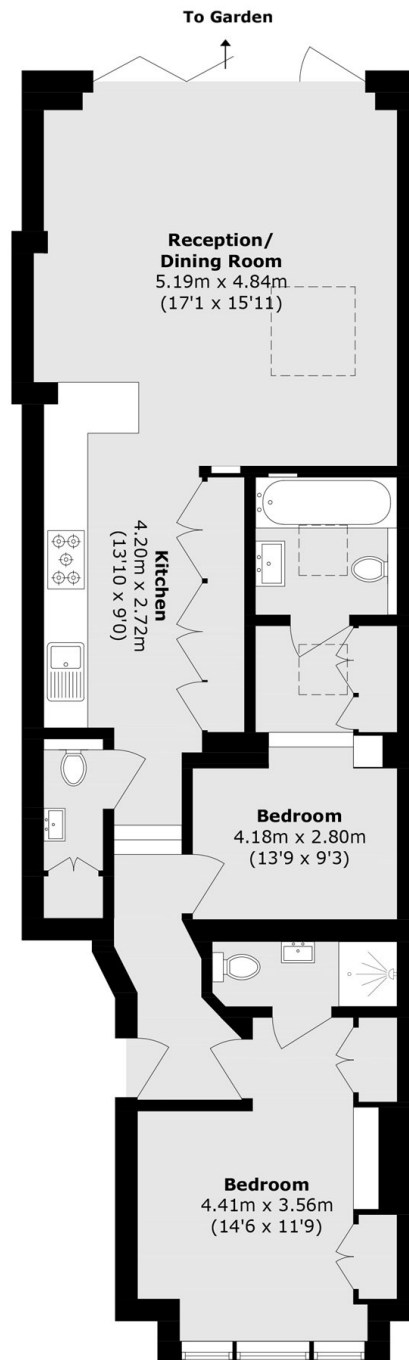
- Share of freehold
- 822 sq. ft
- Two Bedrooms
- Two Bathrooms
- Private Garden
- Period







# Haldon Road, London, SW18



Total area (approx.): 76.4 sq m (822.4 sq ft)