



Crofters Lane, Sutton Coldfield - B75 5UJ
£550,000





Crofters Lane

Sutton Coldfield

This beautifully presented residence welcomes you with an attractive hallway, setting the tone for the spacious and thoughtfully designed interiors beyond. The generous lounge, featuring a striking fireplace and an elegant bay window, provides a warm and inviting space for relaxing evenings or entertaining guests. A versatile playroom (or family room) with custom-fitted cupboards offers the ideal environment for children to play, a home office, or a quiet reading retreat.

At the heart of the home lies a stunning open plan kitchen/dining room, showcasing sleek cabinetry, integrated appliances and completed with a stylish breakfast bar, along with French doors that seamlessly connect to the rear garden. The kitchen is perfectly suited for family gatherings, casual meals, and sophisticated dinner parties alike. A separate utility room keeps laundry and household tasks discreetly tucked away, while a guest WC adds convenience for visitors.





Crofters Lane

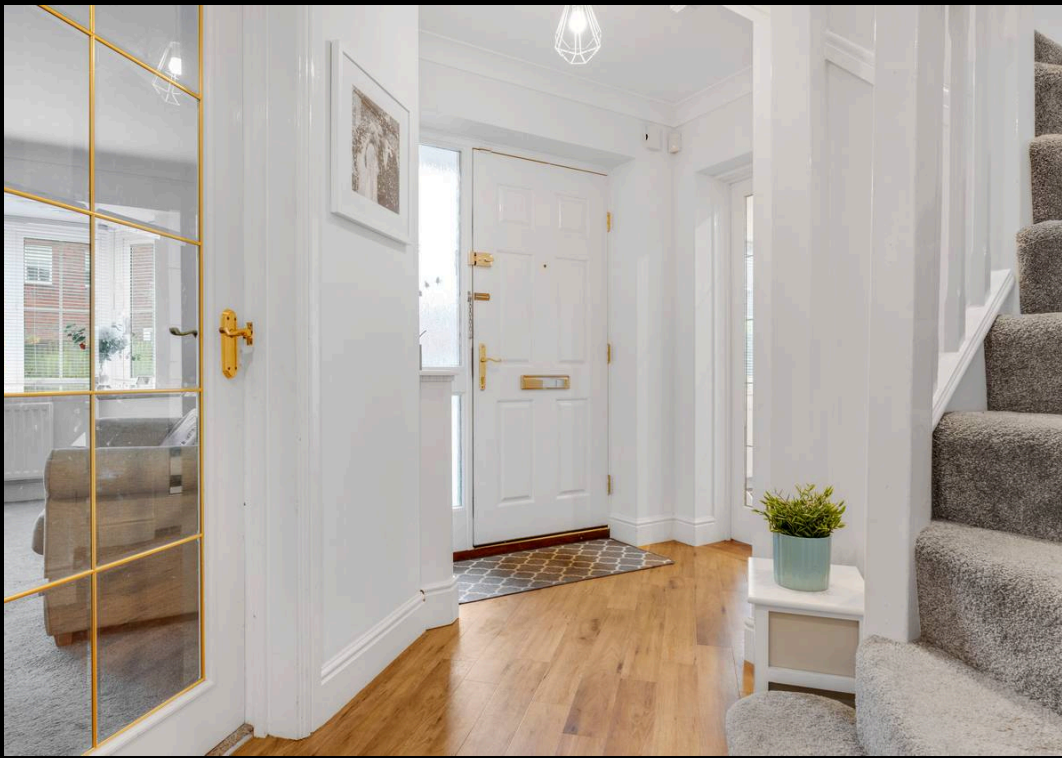
Sutton Coldfield

Upstairs, the first floor landing leads to four well-proportioned double bedrooms, each thoughtfully designed for comfort and privacy. The principal bedroom boasts fitted wardrobes and a contemporary en-suite shower room, creating a luxurious retreat at the end of the day. Three further double bedrooms offer ample space for family or guests, and a modern family bathroom serves these rooms with style and practicality.

To the front of the property, a generous driveway provides off road parking for multiple vehicles, ensuring convenience for both residents and visitors.

The south-facing rear garden is bathed in sunlight throughout the day, making it ideal for summer barbeques, al fresco dining, or simply unwinding with a book on the patio. A well-maintained lawn offers plenty of space for children to play, while mature borders and thoughtfully planted shrubs provide privacy and year-round interest. The patio area is perfectly positioned for outdoor seating and dining, allowing you to make the most of the garden's sunny aspect.







FEATURES:

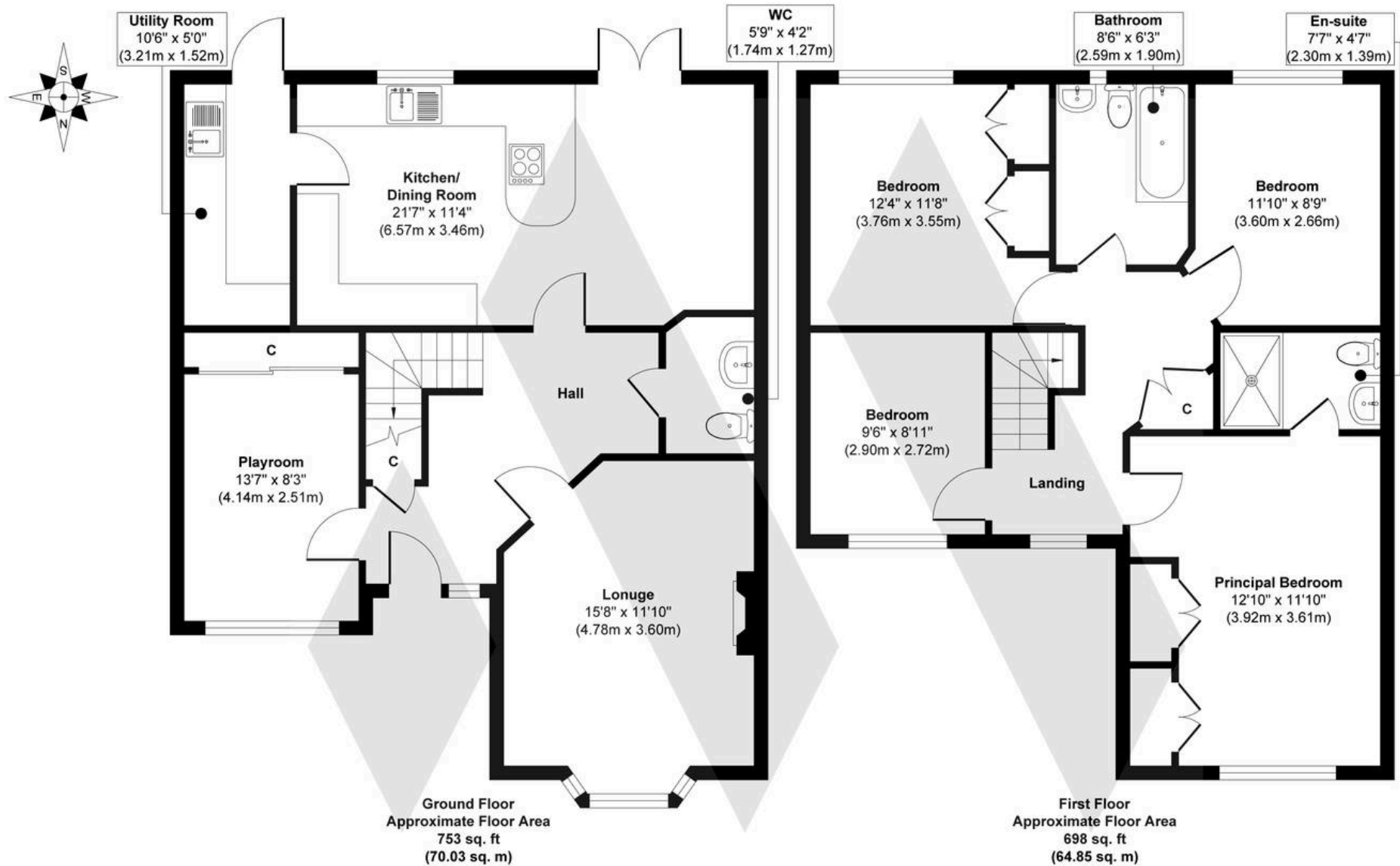
- An exceptional four bedroom family home
- Perfectly positioned within this highly desirable development
- Walking distance to the highly rated Little Sutton Primary School
- Spacious lounge with feature fireplace and bay window
- Stunning kitchen/dining room overlooking the rear garden
- Separate fitted utility room and guest Wc
- Playroom/family room
- South facing rear garden and driveway providing ample parking

INTERESTED?

0121 308 3355

fouroaks@moorhouse-property.co.uk





Approx. Gross Internal Floor Area 1451 sq. ft / 134.88 sq. m

Illustration for identification purposes only, measurements are approximate, not to scale.

Produced by Elements Property

MOORHOUSE

