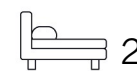


Living
made
better

Ingot Tower
Tower Hamlets, E14 7FY



Offers In Excess Of £450,000

Ingot Tower, Tower Hamlets, E14 7FY

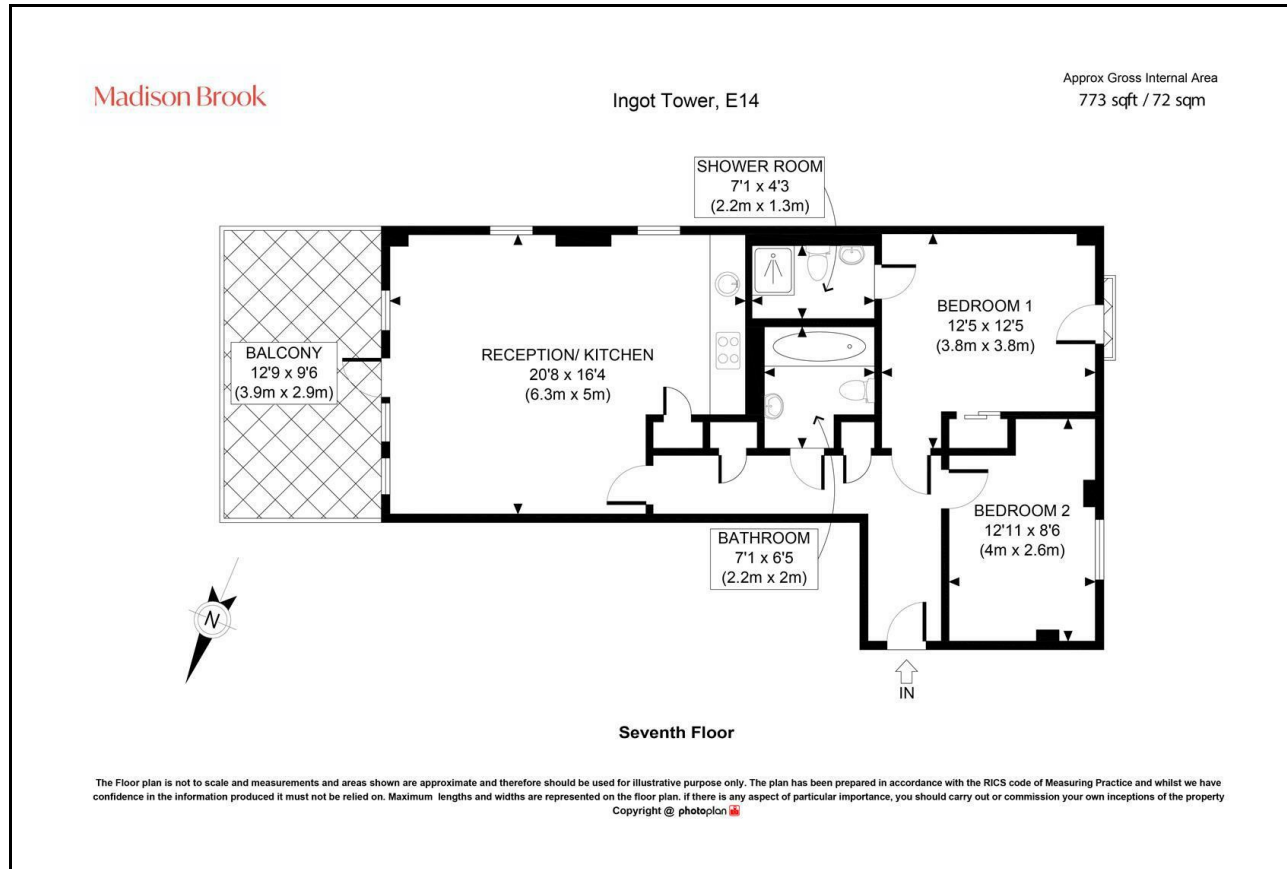
Madison Brook

Property Summary

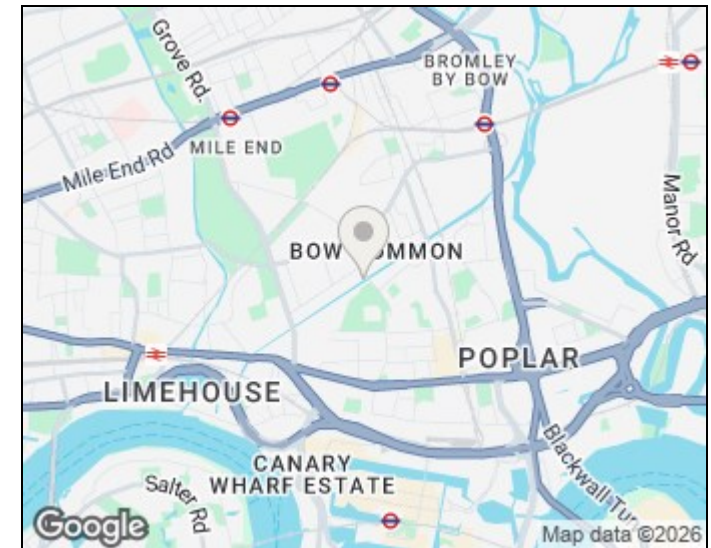
A well-presented two-bedroom, two-bathroom apartment set on the seventh floor of the popular Ingot Tower, E14. The property offers approximately 773 sq ft of accommodation, featuring a spacious open-plan reception/kitchen with access to a private balcony, two double bedrooms including a principal with en-suite, and a modern main bathroom. Residents benefit from onsite concierge services, gated parking and a desirable riverside setting. Ideally located close to Canary Wharf with excellent transport links via Limehouse and Poplar DLR stations.

Service Charge: £471.08pm | Ground Rent: £300pa | Lease Remaining: 109 years

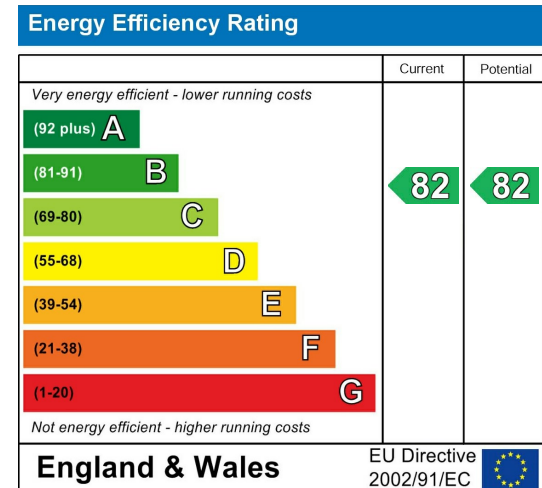
Floorplan



Area Map



Energy Efficiency Graph



These particulars, whilst believed to be accurate are set out as a general outline only for guidance and do not constitute any part of an offer or contract. Intending purchasers should not rely on them as statements of representation of fact, but must satisfy themselves by inspection or otherwise as to their accuracy. No person in this firm's employment has the authority to make or give any representation or warranty in respect of the property.

Unit B 20 Western Gateway, Royal Victoria
Dock, London, E16 1BS
Tel: 020 3946 6000 Email:
docklands@madisonbrook.com
<https://madisonbrook.com/>