

Frank Harris & Co.



Witley Court, WC1N

£675,000

This excellent two-bedroom property is situated on the fourth floor of an attractive 1930s mansion block. The apartment comprises a bright reception room, separate kitchen, two double bedrooms, a shower room, and a spacious hallway. The service charge includes heating and hot water.

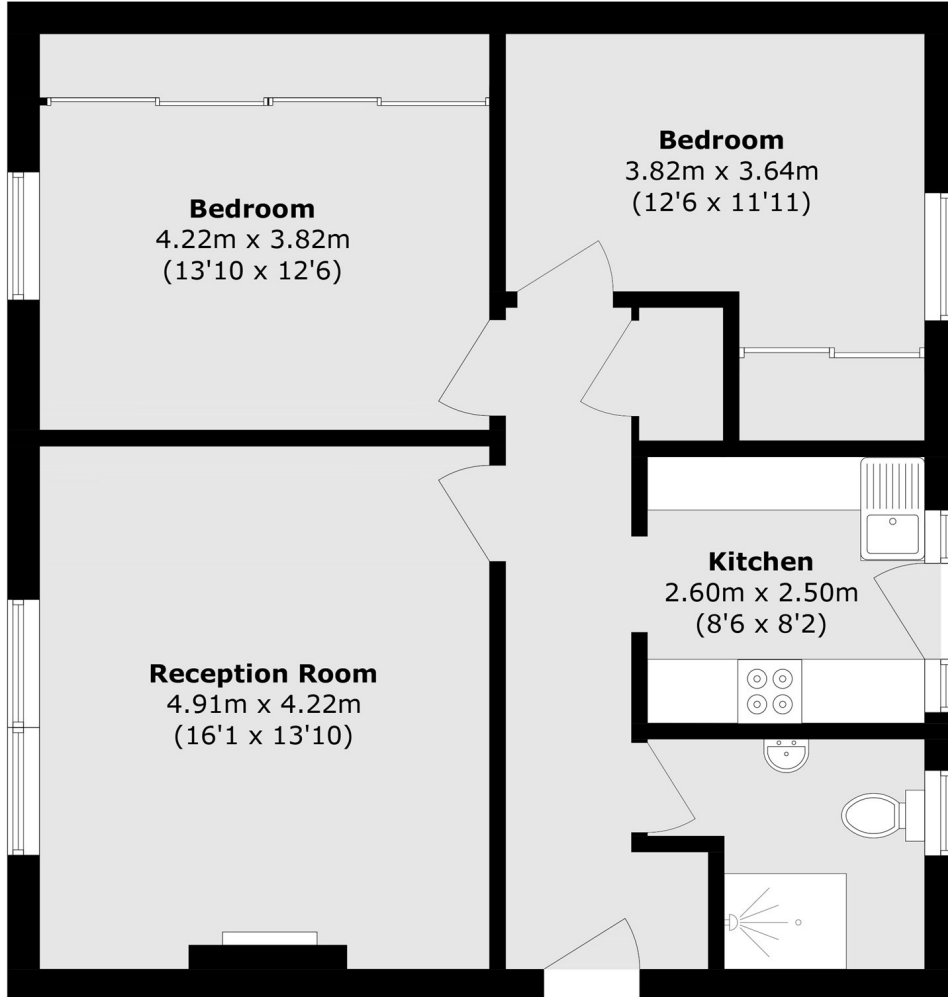


Located in the heart of Bloomsbury, this property is ideally positioned close to a number of notable landmarks and institutions, including the University of London and the British Museum. Excellent transport links are provided by nearby Russell Square Underground Station, with King's Cross St Pancras and Euston also within easy reach.

- Excellent Transport Links • Day Porter • Lift Access •
- Fourth Floor • Mansion Block • Central Location •



Frank Harris & Co.



Total area (approx.): 72.8 sq. m (783.6 sq. ft)

Frank Harris & Co. Bloomsbury and Kings Cross
81 Marchmont Street,
London, WC1N 1AL
020 7405 4444
bloomsburysales@frankharris.co.uk

Energy Rating: C. We aim to make our particulars both accurate and reliable. However they are not guaranteed; nor do they form part of an offer or contract. If you require clarification on any points then please contact us, especially if you're traveling some distance to view. Please note that appliances and heating systems have not been tested and therefore no warranties can be given as to their good working order.

