

EDEN MIDCALF
— SALES & LETTINGS —

£510,000
Bower Hill Drive

Stourport-On-Severn, DY13 0AN



PROPERTY SUMMARY

A substantial four/five bedroom detached family dormer bungalow within this highly desirable cul-de-sac address in Stourport-on-Severn. Backing directly onto fields/farmland, the property offers an a versatile and impressively spacious layout that is attractively appointed throughout and "ready to move into". The property occupies an approximate 1/4 an acre plot, with immense further potential, and includes off-road parking (space for a caravan or motorhome), a garage and large beautifully laid out gardens.

5



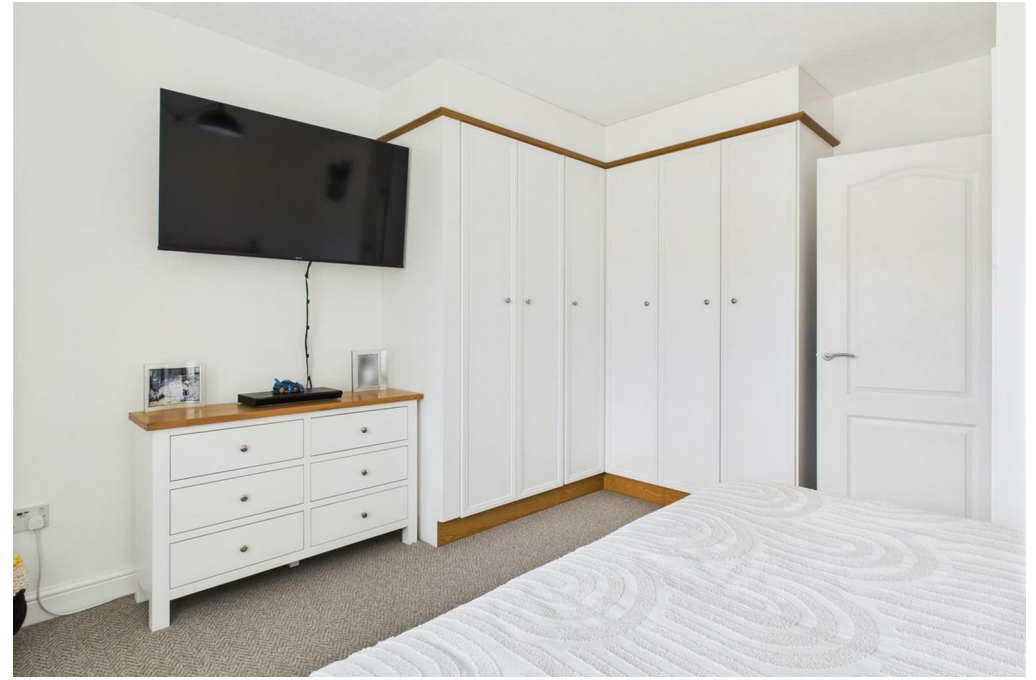
2



2











Approximate total area⁽¹⁾
1413 ft²
131.3 m²

Reduced headroom
13 ft²
1.2 m²

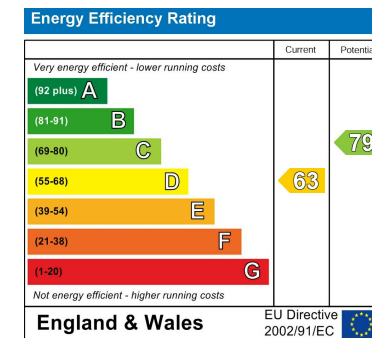
(1) Excluding balconies and terraces

LOCAL AUTHORITY
Wyre Forest District Council

TENURE
Freehold

COUNCIL TAX BAND
E

VIEWINGS
By prior appointment only



Agents Note: Whilst every care has been taken to prepare these particulars, they are for guidance purposes only. All measurements are approximate and are for general guidance purposes only and whilst every care has been taken to ensure their accuracy, they should not be relied upon and potential buyers/tenants are advised to recheck the measurements

EDEN MIDCALF
SALES & LETTINGS

5 Load Street
Bewdley
DY12 2AF

01299 402392
wyreforest@edenmidcalf.co.uk
<https://www.edenmidcalf.co.uk/contact-us/>