


SIGNATURE

NORTH EAST

OFFICIALLY RATED THE NO.1 ESTATE AGENT IN THE NORTH EAST





 Promenade View, Newbiggin-By-The-Sea NE64 6US

Promenade View, Newbiggin-By-The-Sea NE64 6US

Offers Over £499,950

Signature North East are delighted to welcome to the market this stunning four-bedroom detached property, perfectly positioned in the charming coastal town of Newbiggin-by-the-Sea. Set in a highly desirable location with generous room sizes and breathtaking views across the beach, this home is ideal for those who love the outdoors and the fresh sea air. With an array of local amenities close by and excellent schools within easy reach, it offers an exceptional setting for family living. Ashington town centre is just a short drive away, while the nearby Queen Elizabeth II Country Park provides a peaceful spot for leisurely walks and scenic relaxation.

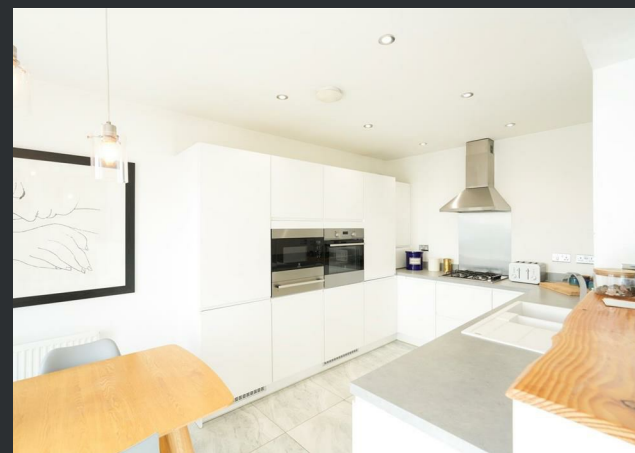
Upon entering, you are greeted by a welcoming central hallway that conveniently provides access to a ground floor W.C. The spacious living room offers ample space for your desired furnishings and features large windows and patio doors that flood the room with natural light, leading out to the garden. The open-plan kitchen and dining area can easily accommodate a family dining table and boasts beautiful sea views. The kitchen itself offers an abundance of storage through attractive wall and base units, complemented by sleek countertops. From here, patio doors open onto the rear garden. To the front of the property, an additional reception room currently serves as a cosy snug, and completing the ground floor is a practical utility room with external access.

Ascending to the first floor, you'll find three generously sized bedrooms, each capable of accommodating a double bed along with other furnishings. The principal bedroom benefits from a modern en-suite with shower, hand basin and W.C., while bedrooms one and two also enjoy delightful beach views. A stylish family bathroom with bath and overhead shower, hand basin and W.C. completes this level.

Continuing to the upper floor, the fourth bedroom features fitted sliding wardrobes, a private en-suite with shower, W.C. and hand basin, and access to a stunning balcony – the perfect spot to unwind and take in the captivating coastal scenery.

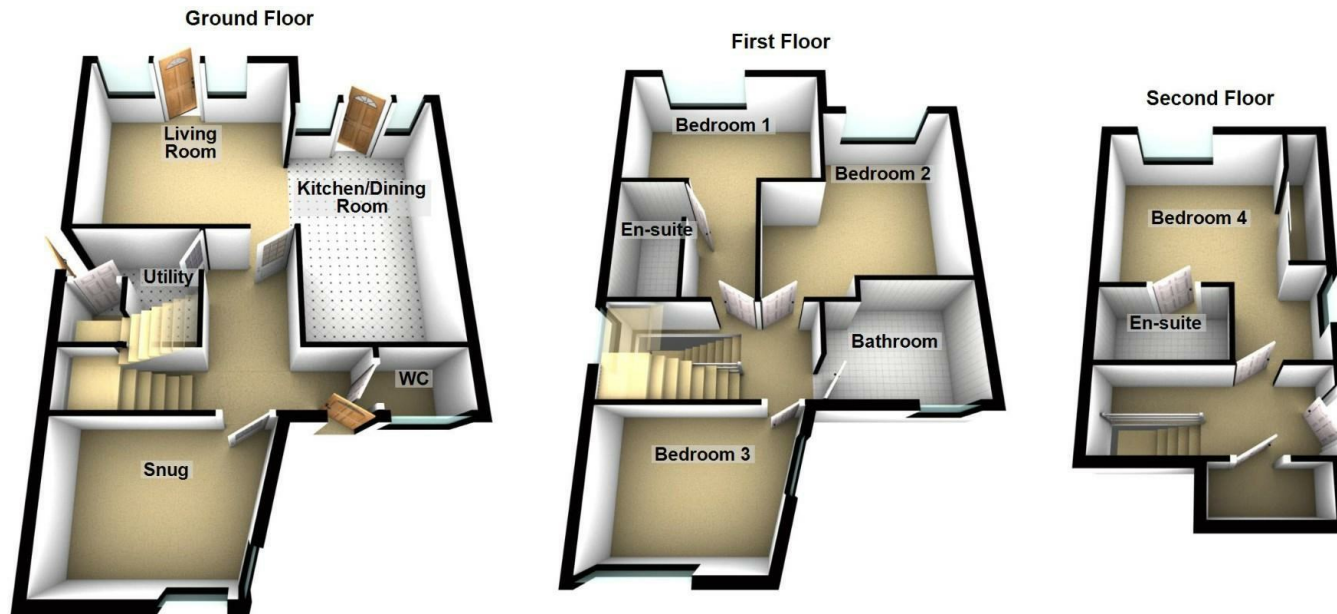
Externally, this home boasts an impressive rear garden laid to lawn with a generous patio area, perfect for outdoor dining and relaxation while enjoying panoramic views across the beach. To the front, a spacious driveway provides parking for multiple vehicles, alongside a detached garage offering additional storage and convenience.

This remarkable home truly combines seaside charm with modern family comfort, making it a rare find on the North East coast.



PLEASE NOTE THAT THE VENDOR HAS CERTIFIED THE PROPERTY INFORMATION AND IMAGES.

PROPERTY FLOORPLAN



Total area: approx. 137.9 sq. metres (1484.6 sq. feet)

Measurements:

Living Room
12'4" x 13'2"

Kitchen / Diner
16'4" x 8'8"

Snug
8'7" x 9'10"

Utility
7'0" x 4'0"

WC
4'11" x 3'5"

Bedroom One
8'3" x 13'2"

En Suite
8'3" x 4'3"

Bedroom Two
12'3" x 13'2"

Bedroom Three
8'0" x 11'10"

Bathroom
9'3" x 7'6"

Bedroom Four
15'1" x 11'1"

En Suite
7'10" x 4'8"

Energy Efficiency Rating

	Current	Potential
Very energy efficient - lower running costs		
(92 plus) A		93
(81-91) B	85	
(69-80) C		
(55-68) D		
(39-54) E		
(21-38) F		
(1-20) G		
Not energy efficient - higher running costs		

England & Wales

EU Directive
2002/91/EC







More 5 Star Customer Reviews than any other Agent based in the North East on allAgents.co.uk



SALES

LETTINGS

FINANCE

LAW

WE COVER THE WHOLE OF THE NORTH EAST

Whitley Bay
0191 251 3344

Cramlington
01670 897 213

Tynemouth
0191 296 6689

Morpeth
01670 513 966

Ponteland
01661 820 082

Wallsend
0191 432 4151

Alnwick
01665 511 800

Heaton
0191 432 4275

Forest Hall
0191 266 9966

Other locations
0191 640 3523

Newcastle
0191 640 2284

Durham
0191 303 8252

Gosforth
0191 640 3523

Sunderland
0191 543 6390

Whickham
0191 432 5102

Gateshead
0191 432 4294

Jesmond
0191 281 1037

Killingworth
0191 640 3602

Ryton
0191 413 9845

Head Office &
Lettings
0191 253 4815

*Highest recommended 5-star reviews than any other Estate Agent based in the North East on allAgents.co.uk - The UK's Largest Customer Review Website for the Property Industry & Awarded Best Estate Agency 2018 & 2019 - North East England by SME News