



# Keble Place

Barnes, SW13

£3,400 per month  
(£784.62 per week)

A well-proportioned flat, set on the ground floor of a modern building, within Harrods Village in north Barnes. The property offers a generous reception room, a fitted kitchen, a principal bedroom suite, a second double bedroom, a second bathroom and an allocated parking space.

The large reception room boasts floor to ceiling windows and the kitchen provides ample storage space with integrated appliances. The principal bedroom benefits from built-in wardrobe space and an en-suite bathroom with a bathtub and separate shower. The second double bedroom also has built-in wardrobe space and the second bathroom has a bathtub as well. There is additional storage space in the hallway.

Harrods Village is a highly-regarded gated development with 24-hour concierge, manicured communal gardens and a leisure suite with a swimming pool, gymnasium and sauna. Its location is ideal for commuting via the public transport hub at nearby Hammersmith via pedestrian or cycle access across the Bridge. It also affords proximity to the Thames towpath, renowned local schools and to the amenities and independent retailers of Castelnaud.

**CHESTERTONS**



# Keble Place

## Barnes, SW13

- Ground Floor Flat in Modern Building
- Two Double Bedrooms & Two Bathrooms
- Allocated Parking Space
- Gated Development with Manicured Communal Gardens
- Residents' Pool, Gym & Sauna



**Minimum Term:** 12 months  
**Deposit Required:** five weeks rent (£3,923.08)  
**Local Authority:** London Borough of Richmond upon Thames  
**Council Tax Band:** F  
**EPC Rating:** C  
**Unfurnished**

Score	Energy rating	Current	Potential
92+	A		
81-91	B		
69-80	C	76 C	76 C
55-68	D		
39-54	E		
21-38	F		
1-20	G		

### Chestertons Barnes Lettings

68-69 Barnes High Street  
 Barnes  
 London  
 SW13 9LD  
 Lettings.barnes@chestertons.co.uk  
 020 8748 7733  
 chestertons.co.uk

Additional tenant charges apply (fees apply to non-AST tenancies only)

Tenancy Agreement Fee: £300  
 References per Tenant/Guarantor: £60  
 Inventory Check: Approx. £100-£250 (inc. VAT)  
[chestertons.co.uk/property-to-rent/applicable-fees](http://chestertons.co.uk/property-to-rent/applicable-fees)

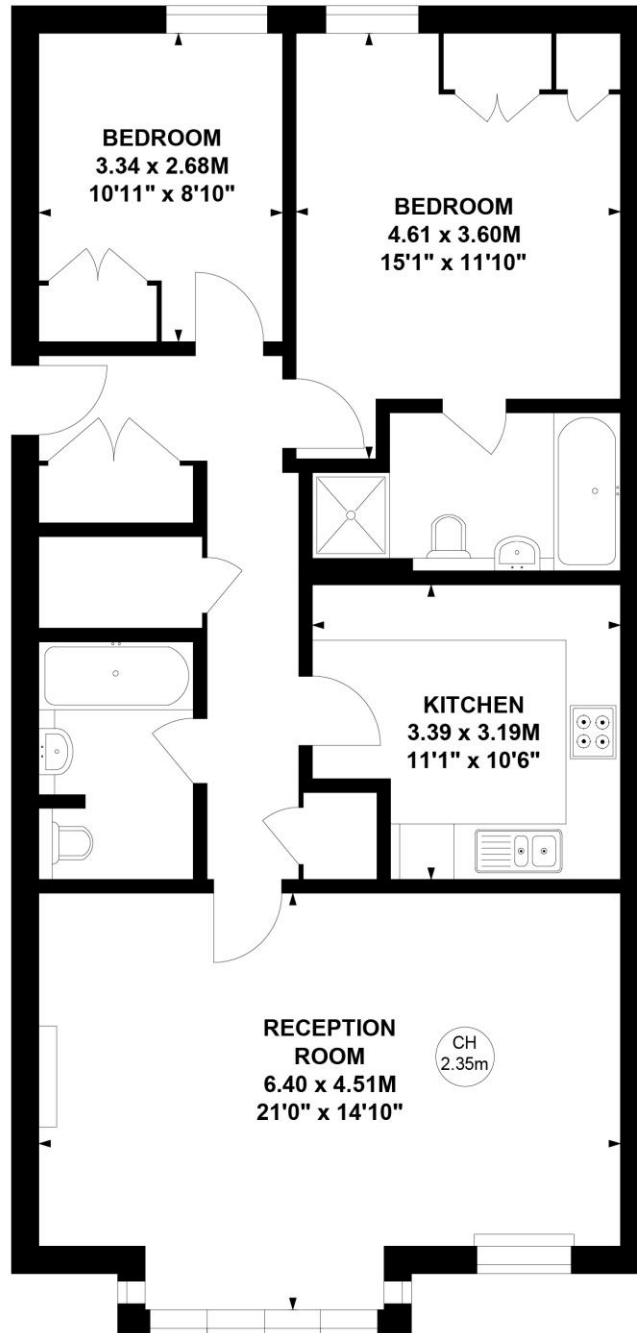
# Keble Place, SW13

Approximate gross internal area

85.84 sq m / 924 sq ft

Key :

CH - Ceiling Height



## Ground Floor

Not to scale, for guidance only and must not be relied upon as a statement of fact.  
All measurements and areas are approximate only

